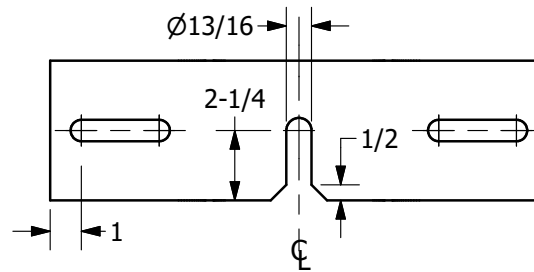
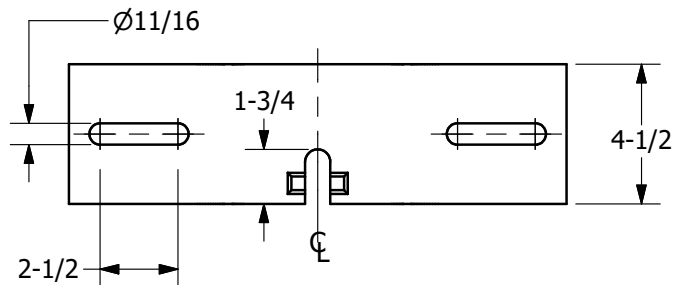
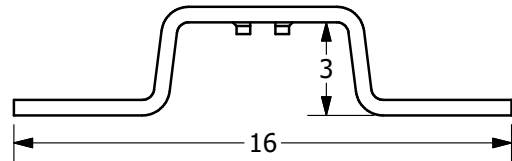
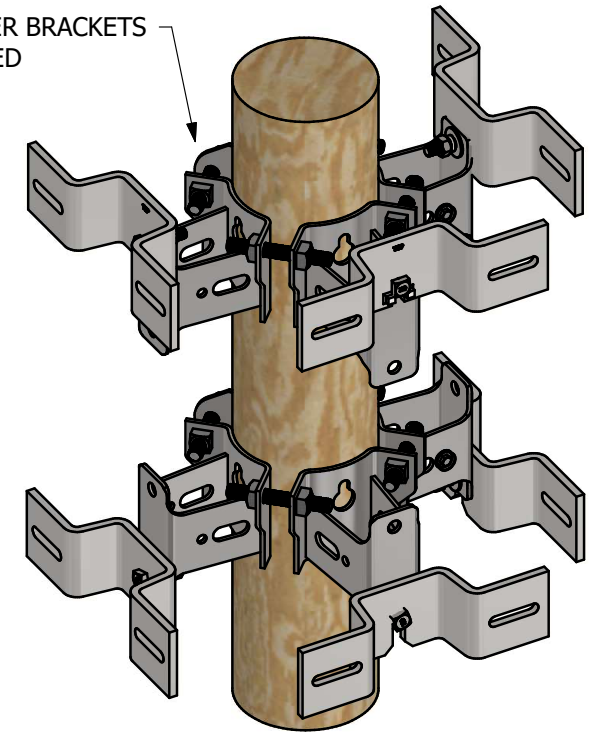


TRANSFORMER BRACKETS
NOT INCLUDED



**ADAPTER PLATE
(TOP)**

**ADAPTER PLATE
(BOTTOM)**

-NOTES-

1. MATERIAL: STEEL.
FINISH: HOT DIP GALVANIZED PER ASTM A153.
2. CATALOG NUMBERS INCLUDE BOTH TOP AND BOTTOM PLATES
3. PARTS ARE SYMMETRIC ABOUT CENTERLINE

CATALOG NUMBER	INCLUDED HARDWARE
C2110058	5/8" X 1.75" SQ. HEAD MACHINE BOLT W/ROUND WASHER (4 EACH)
PSC2110069	5/8" X 2" SQ. HEAD MACHINE BOLT W/SPLIT RING LOCKWASHER (4 EACH)
PSC2110071	5/8" X 1.75" SQ. HEAD GRADE 5 MACHINE BOLT W/ROUND WASHER (4 EACH)

CHANCE [®] <small>CONFIDENTIAL: THIS DRAWING AND ITS CONTENTS ARE CONFIDENTIAL AND THE EXCLUSIVE PROPERTY OF HUBBELL POWER SYSTEMS. NO PUBLICATION, DISTRIBUTION, OR COPIES MAY BE MADE WITHOUT THE WRITTEN CONSENT OF HUBBELL POWER SYSTEMS, HUBBELL POWER SYSTEMS UNPUBLISHED ALL RIGHTS RESERVED UNDER THE COPYRIGHT LAWS.</small>	HUBBELL POWER SYSTEMS, INC.		
	TITLE ADAPTER PLATE ASSEMBLY		
SIZE B	CAT / PART / ASSY NO. SEE CHART	DWG NO. SA2110069	REV C
DO NOT SCALE THIS DRAWING	DRN BY JRT	DATE 01/26/24	SHEET 1 OF 1