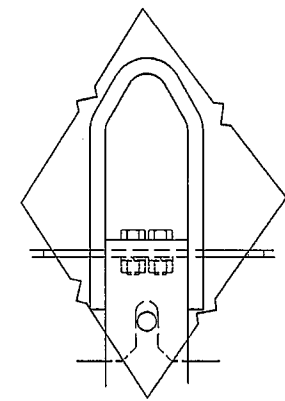


DOUBLE ARMING
BOLT 3/4" DIA. X 8" LG.

DOUBLE ARMING
BOLT 3/4" DIA. X 10" LG.

FITS POLE DIA.
OF 7" TO 12"



VIEW OF LIFTING EYE
CAT. NO. T212-0224

CAT. NO. C212-0143

MATERIAL: GALVANIZED STEEL

SIX- 5/8" DIA. X 2-1/2" LG. &
SIX- 3/4" DIA. X 2-1/2" LG. BOLTS
& NUTS SUPPLIED WITH EACH ASSEMBLY.

LATEST EC NO:	REV.	DATE	CHANGED BY	RESP ENGINEER
92102006	B	03-03-93	QUALLS	ODOM
DO NOT SCALE THIS DWG				THIRD ANGLE PROJECTION ISO DUAL DIMENSIONS IN=INCH, MM=MILLIMETER
DRN BY:	DATE	TITLE:	SIZE	
QUALLS	03-03-93	T1 TYPE TRANSFORMER MOUNTING RACK	C	
				DWG NO: SA212-0143

CONFIDENTIAL: THIS DRAWING AND ITS CONTENTS ARE CONFIDENTIAL AND THE EXCLUSIVE PROPERTY OF HUBBELL / A. B. CHANCE COMPANY. NO PUBLICATION, DISTRIBUTION OR COPIES MAY BE MADE WITHOUT WRITTEN CONSENT BY HUBBELL / A. B. CHANCE COMPANY. © 2000 HUBBELL/A. B. CHANCE. UNPUBLISHED - ALL RIGHTS RESERVED UNDER THE COPYRIGHT LAWS