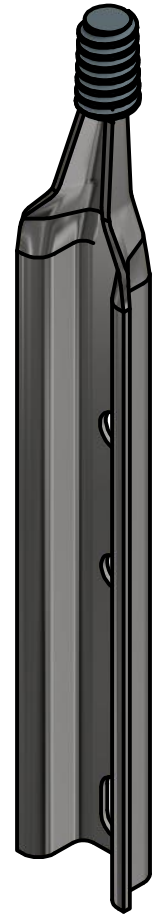
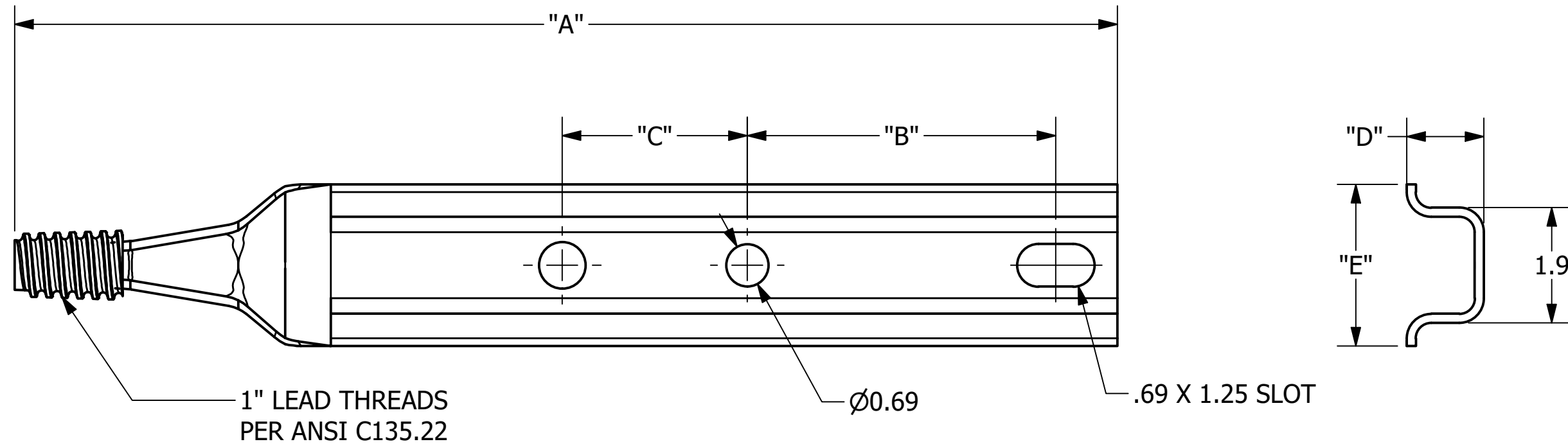


- NOTES -

1. MATERIAL: 9 GA (.15) ASTM A568 STEEL.
2. FINISH: HOT DIP GALVANIZED PER ASTM A153.



CATALOG NUMBER	"A"	"B"	"C"	"D"	"E"
2162	15	5	--	1.3	2.6
2170	18	5	3	1.3	2.6
C2060106	18	8	--	1.3	2.6
2174	20	5	3	1.3	2.6
2199	20	8	--	1.3	2.6
C2060227	21	5	--	1.3	2.6
2171	24	6	2	1.5	2.6
C2060140	24	5	3	1.5	2.6
21971	24	5	3	2.0	2.9

	HUBBELL POWER SYSTEMS, INC.			
	TITLE <b>LEAD THREAD POLE TOP PIN</b>			
CONFIDENTIAL: THIS DRAWING AND ITS CONTENTS ARE CONFIDENTIAL AND THE EXCLUSIVE PROPERTY OF HUBBELL POWER SYSTEMS. NO PUBLICATION, DISTRIBUTION, OR COPIES MAY BE MADE WITHOUT THE WRITTEN CONSENT OF HUBBELL POWER SYSTEMS. HUBBELL POWER SYSTEMS UNPUBLISHED ALL RIGHTS RESERVED UNDER THE COPYRIGHT LAWS.	SIZE <b>B</b>	CAT / PART / ASSY NO. <b>SEE TABLE</b>	DWG NO. <b>SA2162</b>	REV <b>C</b>
DO NOT SCALE THIS DRAWING	DRN BY TOLIVER	DATE 4/20/20	SHEET 1 OF 1	