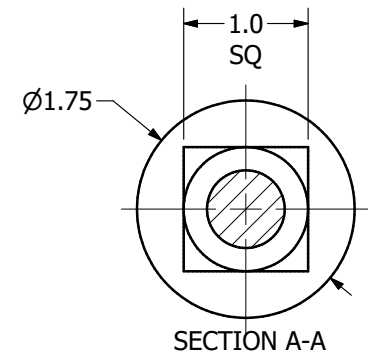
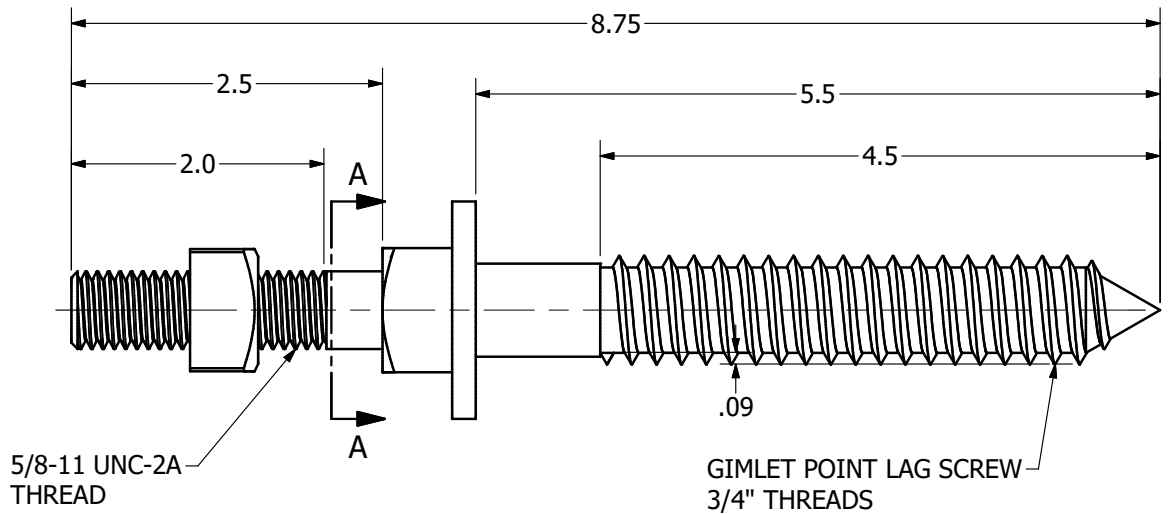
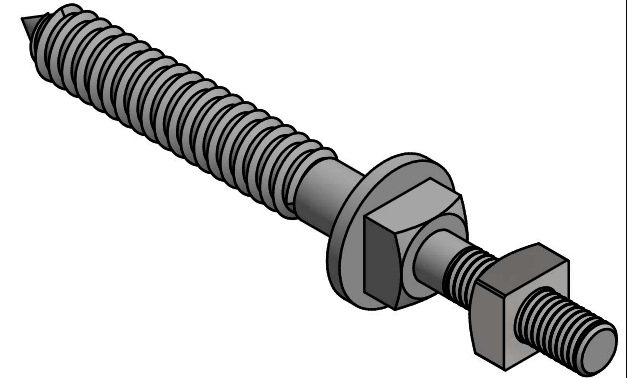


=NOTES=

1. USE FOR LIGHT DUTY MOUNTING OF SUSPENSION CLAMPS OR WHERE A THROUGH BOLT IS NOT POSSIBLE.
2. LAG SCREW PORTION HAS GIMLET THREADS.
3. MACHINE SCREW PORTION HAS 5/8" THREADS WITH ASSEMBLED NUT.
4. STEEL, HOT DIP GALVANIZED PER ASTM A153.



CATALOG NUMBER: PSC2170146

CHANCE [®] <small>CONFIDENTIAL: THIS DRAWING AND ITS CONTENTS ARE CONFIDENTIAL AND THE EXCLUSIVE PROPERTY OF HUBBELL POWER SYSTEMS. NO PUBLICATION, DISTRIBUTION, OR COPIES MAY BE MADE WITHOUT THE WRITTEN CONSENT OF HUBBELL POWER SYSTEMS, HUBBELL POWER SYSTEMS UNPUBLISHED ALL RIGHTS RESERVED UNDER THE COPYRIGHT LAWS.</small>	HUBBELL [®] HUBBELL POWER SYSTEMS, INC.		
	TITLE SCREW SUSPENSION B CABLE		
SIZE B	CAT / PART / ASSY NO. PSC2170146	DWG NO. SA2170146	REV C
DO NOT SCALE THIS DRAWING	DRN BY CBW	DATE 4/6/23	SHEET 1 OF 1