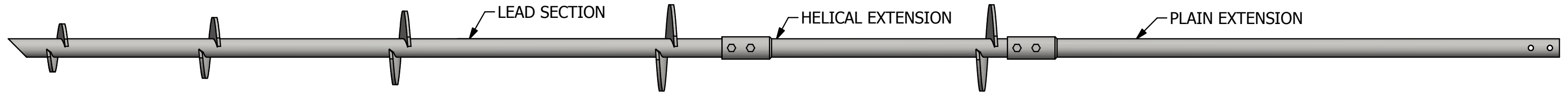


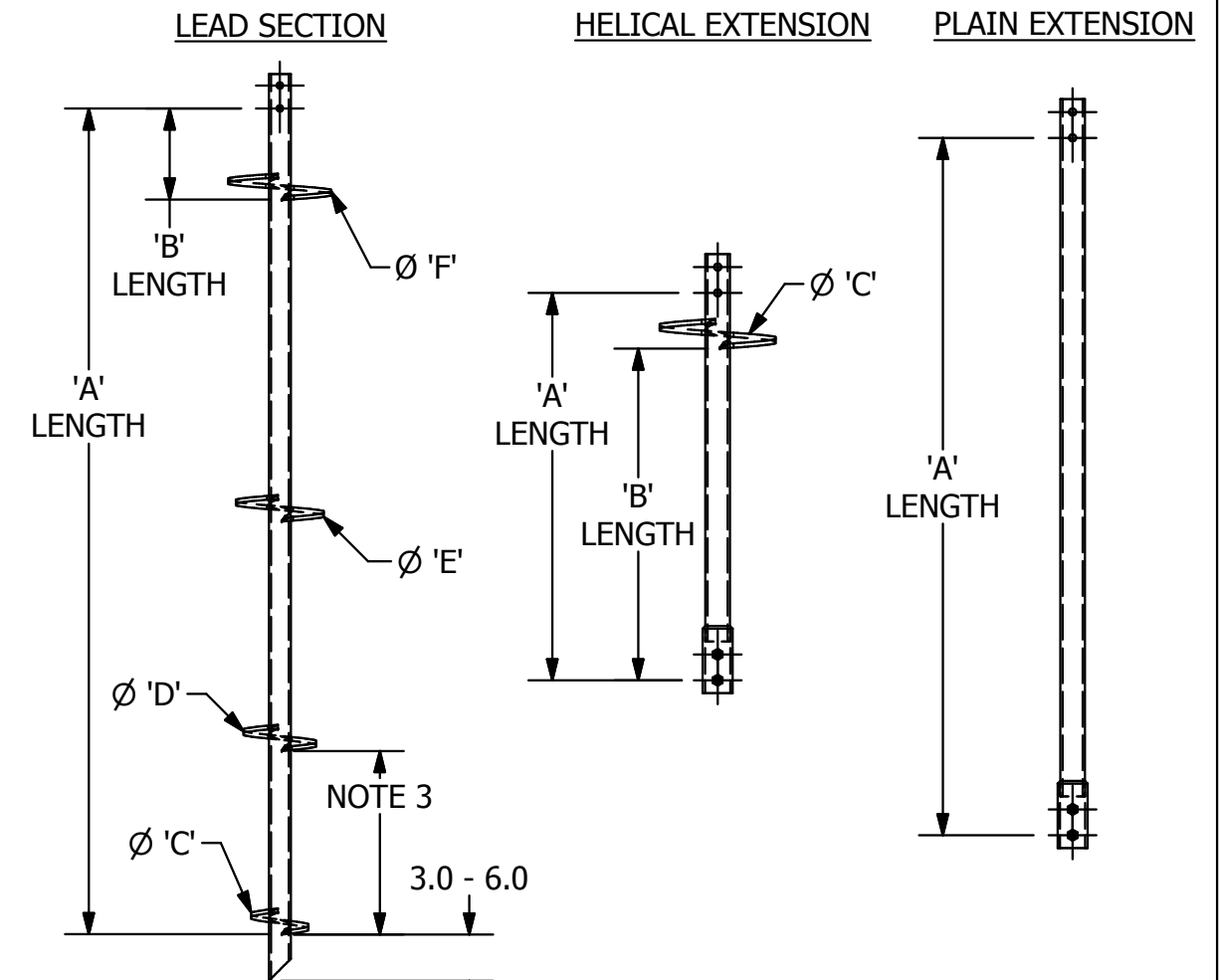
TORQUE STRENGTH RATING: 8,900 FT-LB
 ULTIMATE CAPACITY* (TENSION/ COMPRESSION): 80.1 KIP
 * BASED ON A TORQUE FACTOR (Kt): 9/FT
 SINGLE HELIX ULTIMATE STRENGTH: 93 KIP
 ULTIMATE TENSION STRENGTH: 98 KIP

RS2875.276 HELICAL PILES

TYPICAL PILE ASSEMBLY



PART NUM	DESCRIPTION	'A'	'B'	'C'	'D'	'E'	'F'
C2788210	LEAD, RS2875.276, 8 X 7FT	76	76	8			
T1071312	LEAD, RS2875.276, 8 X 10FT	118	118	8			
C2788002	LEAD, RS2875.276, 10 X 5FT	46	46	10			
C2788001	LEAD, RS2875.276, 10 X 7FT	76	76	10			
C2788221	LEAD, RS2875.276, 12 X 7FT	76	76	12			
C2788222	LEAD, RS2875.276, 14 X 7FT	76	76	14			
C2788007	LEAD, RS2875.276, 8/10 X 5FT	56	32	8	10		
C2788003	LEAD, RS2875.276, 10/12 X 5FT	46	26	10	12		
C2788009	LEAD, RS2875.276, 10/12 X 7FT	76	46	10	12		
C2788004	LEAD, RS2875.276, 8/10/12 X 7FT	76	22	8	10	12	
C2788005	LEAD, RS2875.276, 10/12/14 X 7FT	76	10	10	12	14	
C2788006	LEAD, RS2875.276, 8/10/12/14 X 10FT	118	10	8	10	12	14
C2788179	LEAD, RS2875.276, 10/12/14/14 X 10FT	118	10	10	12	14	14
C2788225	EXTENSION, RS2875.276, 3-1/2FT	38					
C2788218	EXTENSION, RS2875.276, 5FT	56					
C2788219	EXTENSION, RS2875.276, 7FT	80					
C2788220	EXTENSION, RS2875.276, 10FT	116					
C2788228	HELICAL EXTENSION, RS32875.276, 14X3-1/2FT	38	27	14			



* * NOTES * *

- HOT DIP GALVANIZED PER ASTM A123 (LATEST REV)
- LEAD AND EXTENSION SECTION LENGTHS AND HELIX SPACINGS ARE NOMINAL
- NOMINAL SPACING BETWEEN HELIX PLATES IS THREE TIMES THE DIAMETER OF THE LOWER HELIX
- SHAFT MATERIAL PER ASTM A618 OR A500 GRADE B
- HELIX MATERIAL LOW CARBON STEEL MEETING THE GENERAL REQUIREMENTS OF AISI OR ASTM A572, A656, OR A1018
- COUPLING MATERIAL PER ASTM A513 DOM WITH A MINIMUM YIELD OF 65KSI
- COUPLING BOLTS 3/4" DIAMETER X 5-1/4" LONG HEX HEAD PER SAE J425 GRADE 5
- MANUFACTURER TO HAVE IN EFFECT INDUSTRY RECOGNIZED WRITTEN QUALITY CONTROL FOR ALL MATERIALS AND MANUFACTURING PROCESSES
- ALL WELDING TO BE DONE BY WELDERS CERTIFIED UNDER SECTION 5 OF THE AWS CODE D1.1
- EXTENSION MUST BE PROVIDED WITH A WELDED SLEEVE ON ONE END WITH MATERIAL PER NOTE 6
- SEE ICC EVALUATION SERVICE INC., EVALUATION REPORT #ESR-2794 FOR ALLOWABLE VALUES AND/OR CONDITIONS OF USE CONCERNING MATERIAL PRESENTED IN THIS DOCUMENT

CHANCE®		HUBBELL® HUBBELL POWER SYSTEMS, Inc. POWER SYSTEMS, INC.	
CONFIDENTIAL: THIS DRAWING AND ITS CONTENTS ARE CONFIDENTIAL AND THE EXCLUSIVE PROPERTY OF HUBBELL POWER SYSTEMS. NO PUBLICATION, DISTRIBUTION OR COPIES MAY BE MADE WITHOUT THE WRITTEN CONSENT OF HUBBELL POWER SYSTEMS. HUBBELL POWER SYSTEMS UNPUBLISHED ALL RIGHTS RESERVED UNDER THE COPYRIGHT LAWS.		TITLE RS2875.276 PIPE PILES ICC-ES (AC-358)	
SIZE SB	CAT / PART / ASSY NO. SEE CHART	DWG NO. SA2788218	REV A
DO NOT SCALE THIS DRAWING	DRN BY TMK	DATE 11/5/14	SHEET 1 OF 1