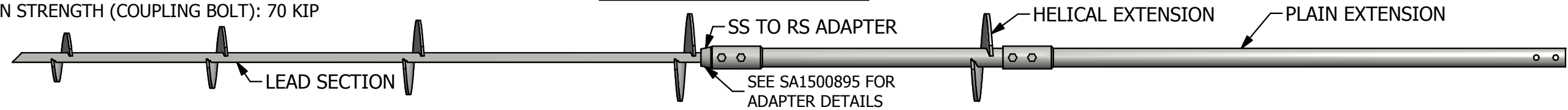


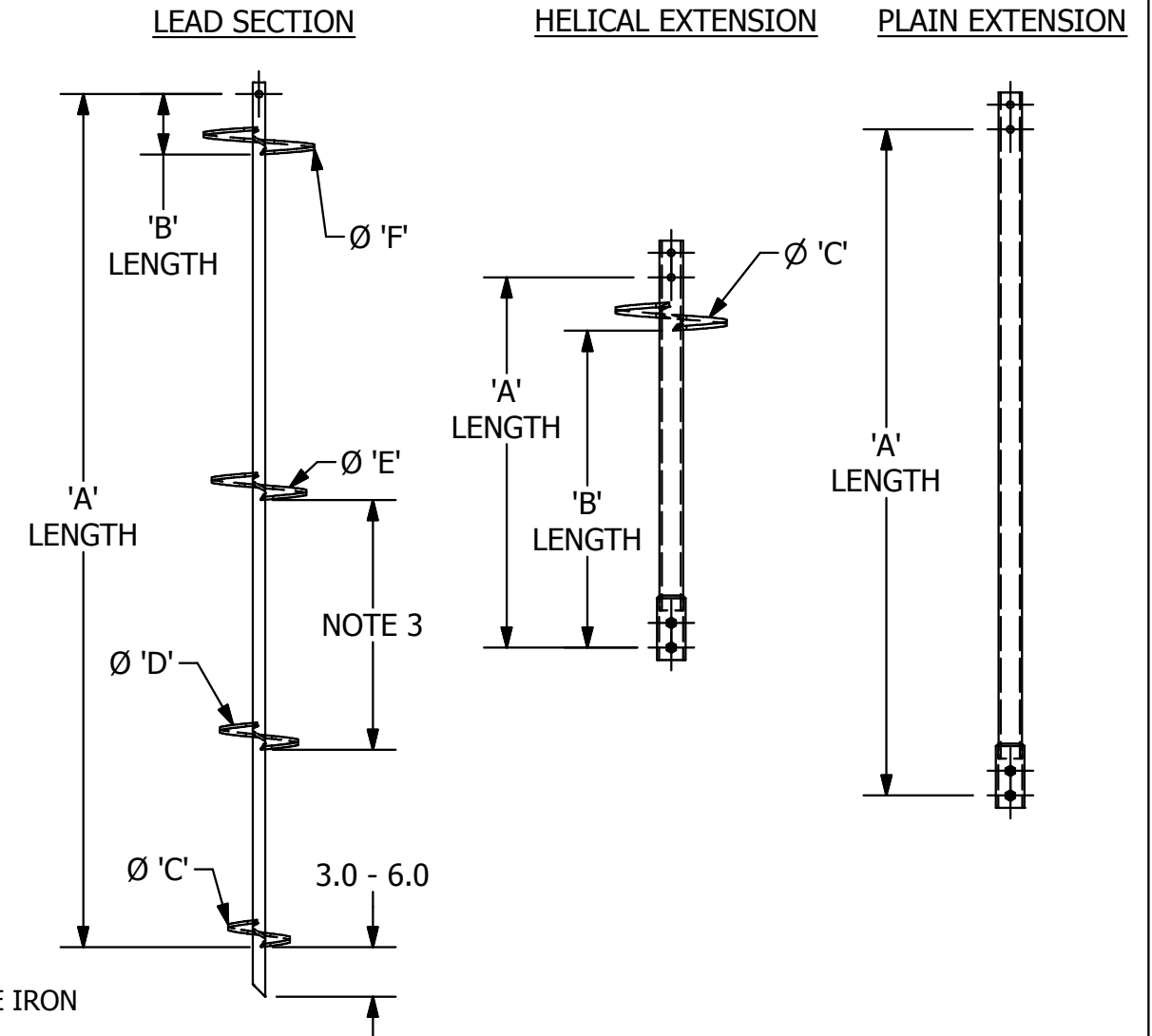
TORQUE STRENGTH RATING: 7,000 FT-LB
 ULTIMATE CAPACITY* (TENSION/ COMPRESSION): 63 KIP
 * BASED ON A TORQUE FACTOR (Kt): 9/FT
 SINGLE HELIX ULTIMATE STRENGTH: 50 KIP
 ULTIMATE TENSION STRENGTH (COUPLING BOLT): 70 KIP

RS2875.276 HELICAL COMBO PILES

TYPICAL PILE ASSEMBLY



PART NUM	DESCRIPTION	'A'	'B'	'C'	'D'	'E'	'F'
C1500768	LEAD, SS150, 10 X 5FT	57	57	10			
C1501395	LEAD, SS150, 12 X 7FT	79	79	12			
C1500704	LEAD, SS150, 14 X 7FT	76	76	14			
C1500168	LEAD, SS150, 8/10 X 3FT	32	8	8	10		
C1500472	LEAD, SS150, 8/10 X 5FT	57	33	8	10		
C1500490	LEAD, SS150, 8/10 X 7FT	76	52	8	10		
C1100871	LEAD, SS150, 10/12 X 5FT	57	27	10	12		
C1500169	LEAD, SS150, 8/10/12 X 5FT	60	7	8	10	12	
C1501029	LEAD, SS150, 8/10/12 X 7FT	76	22	8	10	12	
C1500163	LEAD, SS150, 10/12/14 X 7FT	76	10	10	12	14	
C1500165	LEAD, SS150, 10/12/14/14 X 10FT	116	8	10	12	14	14
C1500896	ADAPTER, SS5/SS150 TO RS2875						
C2788225	EXTENSION, RS2875.276, 3-1/2FT	38					
C2788218	EXTENSION, RS2875.276, 5FT	56					
C2788219	EXTENSION, RS2875.276, 7FT	80					
C2788220	EXTENSION, RS2875.276, 10FT	116					
C2788228	HELICAL EXTENSION, RS2875.276, 14X3-1/2FT	38	27	14			



* * NOTES * *

- HOT DIP GALVANIZED PER ASTM A123 AND A153 (LATEST REV)
- LEAD AND EXTENSION SECTION LENGTHS AND HELIX SPACINGS ARE NOMINAL
- NOMINAL SPACING BETWEEN HELIX PLATES IS THREE TIMES THE DIAMETER OF THE LOWER HELIX
- PIPE SHAFT MATERIAL PER ASTM A618 OR A500 GRADE B, SQUARE SHAFT MATERIAL PER A29 & A576 MOD, ADAPTER MATERIAL DUCTILE IRON
- HELIX MATERIAL LOW CARBON STEEL MEETING THE GENERAL REQUIREMENTS OF AISI OR ASTM A572, A656, OR A1018
- PIPE SHAFT COUPLING MATERIAL PER ASTM A513 DOM, MINIMUM YIELD OF 65KSI
- COUPLING BOLTS: 3/4" DIAMETER X 4-1/4" LONG HEX HEAD PER SAE J425 GRADE 5
- MANUFACTURER TO HAVE IN EFFECT INDUSTRY RECOGNIZED WRITTEN QUALITY CONTROL FOR ALL MATERIALS AND MANUFACTURING PROCESSES
- ALL WELDING TO BE DONE BY WELDERS CERTIFIED UNDER SECTION 5 OF THE AWS CODE D1.1
- EXTENSIONS MUST BE PROVIDED WITH A WELDED SLEEVE ON ONE END WITH MATERIAL PER NOTE 6
- SEE ICC EVALUATION SERVICE INC., EVALUATION REPORT #ESR-2794 FOR ALLOWABLE VALUES AND/OR CONDITIONS OF USE CONCERNING MATERIAL PRESENTED IN THIS DOCUMENT

CHANCE®		HUBBELL® POWER SYSTEMS, INC.	
CONFIDENTIAL: THIS DRAWING AND ITS CONTENTS ARE CONFIDENTIAL AND THE EXCLUSIVE PROPERTY OF HUBBELL POWER SYSTEMS. NO PUBLICATION, DISTRIBUTION OR COPIES MAY BE MADE WITHOUT THE WRITTEN CONSENT OF HUBBELL POWER SYSTEMS. HUBBELL POWER SYSTEMS UNPUBLISHED ALL RIGHTS RESERVED UNDER THE COPYRIGHT LAWS.		TITLE RS2875.276 COMBO PILES ICC-ES (AC-358)	
SIZE SB	CAT / PART / ASSY NO. SEE CHART	DWG NO. SA2788219	REV -
DO NOT SCALE THIS DRAWING	DRN BY TMK	DATE 11/5/14	SHEET 1 OF 1