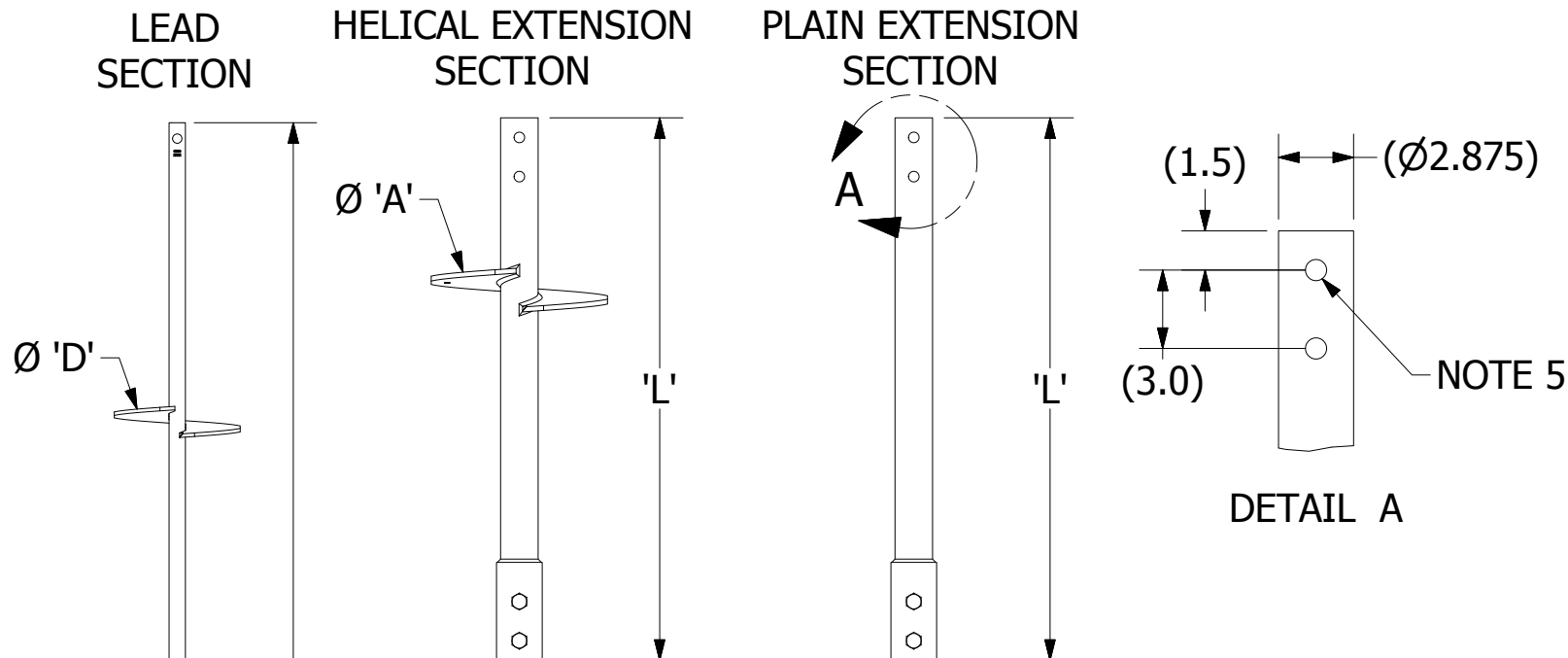
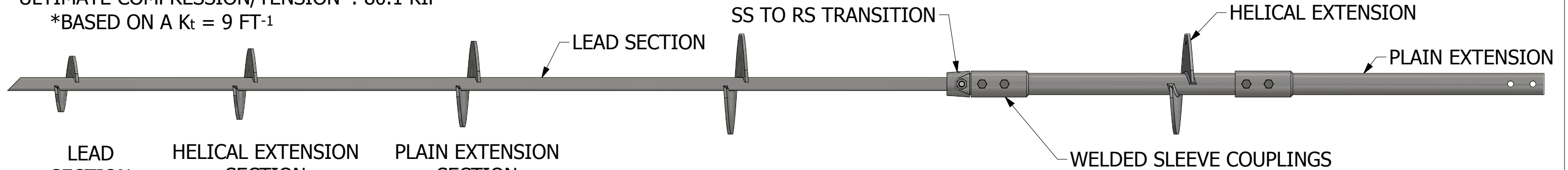


SS175 TO RS2875.276 HELICAL COMBO PILES

TORQUE STRENGTH RATING: 8,900 FT-LB
 ULTIMATE COMPRESSION/TENSION*: 80.1 KIP
 *BASED ON A $K_t = 9 \text{ FT}^{-1}$



*** * NOTES * ***

1. HOT DIP GALVANIZED PER ASTM A123
2. LEAD AND EXTENSION SECTION LENGTHS AND HELIX SPACINGS ARE NOMINAL
3. PIPE MATERIAL PER ASTM A618 OR A500 GRADE B/C MIN YIELD 50KSI. SOLID SHAFT MATERIAL PER ASTM A29 & A576 MOD SS TO RS ADAPTER MATERIAL DUCTILE IRON
4. HELIX MATERIAL LOW CARBON STEEL MEETING THE GENERAL REQUIREMENTS OF AISI OR ASTM A572, A656, OR A1018
5. COUPLING BOLTS Ø 0.75 INCH HEX HEAD PER SAE J429 GRADE 5.
6. MANUFACTURER TO HAVE IN EFFECT INDUSTRY RECOGNIZED WRITTEN QUALITY CONTROL FOR ALL MATERIALS AND MANUFACTURING PROCESSES
7. ALL WELDING TO BE DONE BY WELDERS CERTIFIED UNDER SECTION 5 OF THE AWS CODE D1.1.
8. ALL MEASUREMENTS ARE IN INCHES UNLESS SPECIFIED.
9. HARDWARE IS PROVIDED WITH EXTENSIONS AND HELICAL EXTENSION SECTIONS.
10. HELIX SPACING IS THREE DIAMETERS OF LOWER HELIX.

PART NUM	DESCRIPTION	'A'	'B'	'C'	'D'	'L' (FT)
T1500557	LEAD, SS175, 6/8 X 5FT .5IN TH	6	8	-	-	5
C1500010	LEAD, SS175, 8 X 5FT	8	-	-	-	5
T1500264	LEAD, SS175, 8 X 5FT .5IN TH	8	-	-	-	5
C1500179	LEAD, SS175, 8/10 X 3FT	8	10	-	-	3.5
C1500012	LEAD, SS175, 8/10 X 5FT	8	10	-	-	5
C1500493	LEAD, SS175, 8/10 X 7FT	8	10	-	-	7
C1500180	LEAD, SS175, 8/10/12 X 5FT	8	10	12	-	5
C1500401	LEAD, SS175, 8/10/12 X 7FT	8	10	12	-	7
C1100247	LEAD, SS175, 8/10/12/14 X 10FT	8	10	12	14	10
C1500011	LEAD, SS175, 10 X 5FT	10	-	-	-	5
C1500093	LEAD, SS175, 10/12 X 5FT	10	12	-	-	5
T1100674	LEAD, SS175, 10/12/14 X 7FT	10	12	14	-	7
C1500402	LEAD, SS175, 10/12/14 X 10FT	10	12	14	-	10
C1500181	LEAD, SS175, 14/14/14 X 10FT	14	14	14	-	10
C1501365	TRANSITION, SS175 TO RS2875	-	-	-	-	1
C2788225	EXTENSION, RS2875.276, 3.5FT BLDCD	-	-	-	-	3.5
C2788218	EXTENSION, RS2875.276, 5FT BLDCD	-	-	-	-	5
C2788219	EXTENSION, RS2875.276, 7FT BLDCD	-	-	-	-	7
C2788220	EXTENSION, RS2875.276, 10FT BLDCD	-	-	-	-	10
C2788228	EXTENSION, RS2875.276, 14 X 3.5FT BLDCD	14	-	-	-	3.5

	HUBBELL POWER SYSTEMS, INC.			
	TITLE HELICAL PIER SS175 TO RS2875.276 BLDCD			
CONFIDENTIAL: THIS DRAWING AND ITS CONTENTS ARE CONFIDENTIAL AND THE EXCLUSIVE PROPERTY OF HUBBELL POWER SYSTEMS. NO PUBLICATION, DISTRIBUTION, OR COPIES MAY BE MADE WITHOUT THE WRITTEN CONSENT OF HUBBELL POWER SYSTEMS. HUBBELL POWER SYSTEMS UNPUBLISHED ALL RIGHTS RESERVED UNDER THE COPYRIGHT LAWS.	SIZE B	CAT / PART / ASSY NO. SEE CHART	DWG NO. SA2788225	REV A
	DO NOT SCALE THIS DRAWING	DRN BY TMK	DATE 11/22/17	SHEET 1 OF 1