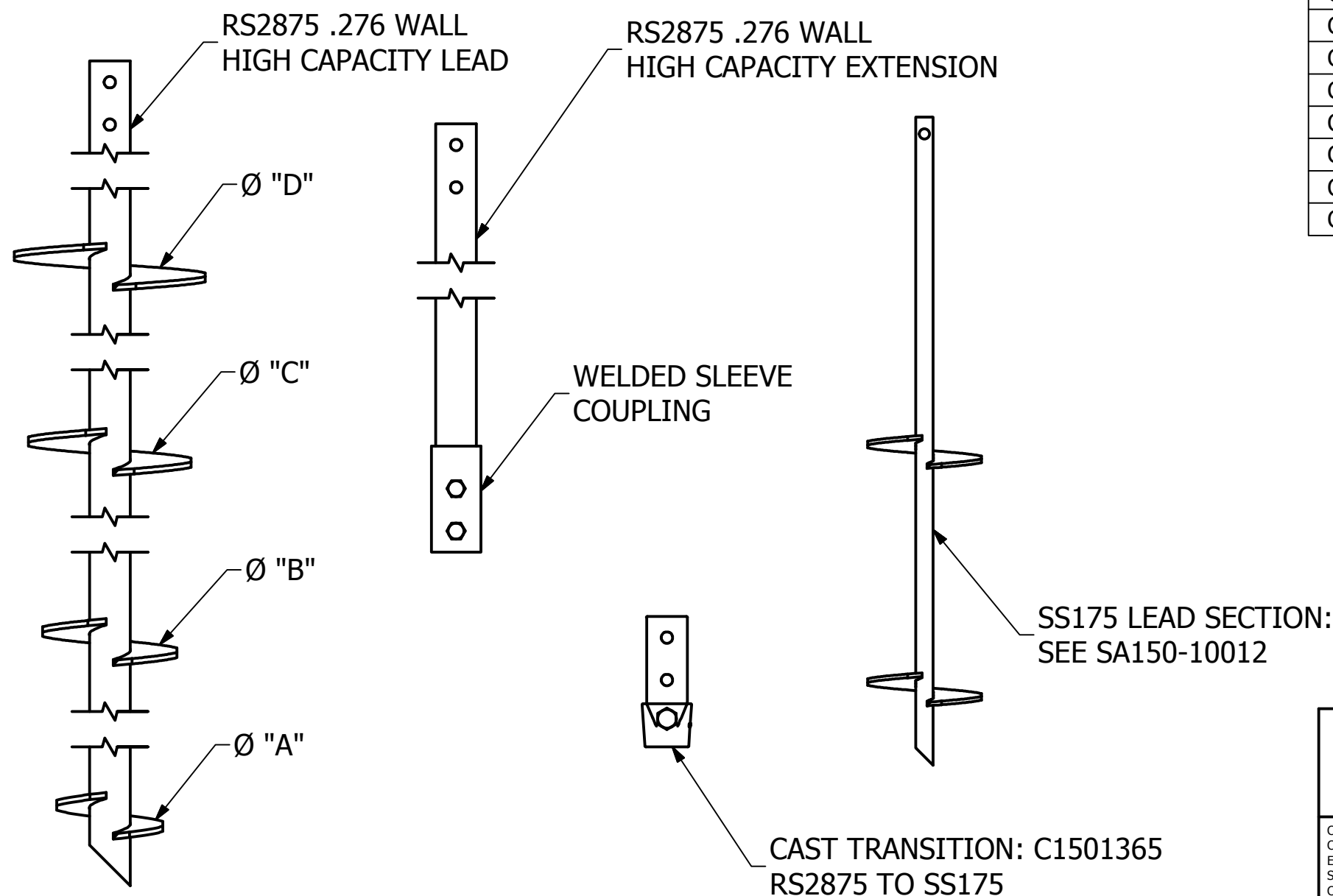


# RS2875.276 HIGH CAPACITY HELICAL PILES, SS175 COMBO PILES, LEADS, AND EXTENSIONS

## --NOTES--

1. FINISH: HOT DIP GALVANIZED PER ASTM A123. EXTENSIONS ALSO AVAILABLE IN BLACK FINISH. ADD 'NG' TO THE END OF THE PART NUMBER FOR NON-GALVANIZED PRODUCT
2. MATERIAL: HIGH STRENGTH STEEL
3. MANUFACTURER TO HAVE IN EFFECT INDUSTRY RECOGNIZED WRITTEN QUALITY CONTROL FOR ALL MATERIALS AND MANUFACTURING PROCESSES
4. ALL WELDING TO BE DONE BY CERTIFIED WELDERS UNDER SECTION 5 OF THE AWS CODE D1.1
5. HARDWARE IS PROVIDED WITH EXTENSIONS- Ø .75 INCH, HEX HEAD PER SAE J429 GRADE 5
6. HELIX SPACING IS THREE DIAMETERS OF LOWER HELIX

| CATALOG NUMBER | DESCRIPTION | LENGTH | "A" | "B" | "C" | "D" |
|----------------|-------------|--------|-----|-----|-----|-----|
| C2788401       | LEAD        | 7 FT   | 10  | --  | --  | --  |
| C2788402       | LEAD        | 5 FT   | 10  | --  | --  | --  |
| C2788403       | LEAD        | 5 FT   | 10  | 12  | --  | --  |
| C2788404       | LEAD        | 7 FT   | 8   | 10  | 12  | --  |
| C2788405       | LEAD        | 7 FT   | 10  | 12  | 14  | --  |
| C2788406       | LEAD        | 10 FT  | 8   | 10  | 12  | 14  |
| C2788407       | LEAD        | 5 FT   | 8   | 10  | --  | --  |
| C2788408       | LEAD        | 7 FT   | 10  | 12  | --  | --  |
| C2788409       | LEAD        | 10 FT  | 10  | 12  | 14  | 14  |
| C2788410       | LEAD        | 10 FT  | 8   | --  | --  | --  |
| C2788411       | LEAD        | 7 FT   | 12  | --  | --  | --  |
| C2788412       | LEAD        | 7 FT   | 14  | --  | --  | --  |
| C2788413       | LEAD        | 7 FT   | 8   | --  | --  | --  |
| C2788380       | EXTENSION   | 3.5FT  | --  | --  | --  | --  |
| C2788381       | EXTENSION   | 5FT    | --  | --  | --  | --  |
| C2788382       | EXTENSION   | 7FT    | --  | --  | --  | --  |
| C2788383       | EXTENSION   | 10FT   | --  | --  | --  | --  |



TORQUE RATING: NOT TO EXCEED 10,500 FT-LBS

COMBO PILE ULTIMATE CAPACITY: 100 KIP\*  
 \*BASED ON A TORQUE FACTOR (KT) FOR COMBO PILE OF 9.5

PILE PILE ULTIMATE CAPACITY: 95 KIP\*\*  
 \*\*BASED ON A TORQUE FACTOR (KT) FOR PIPE PILE OF 9.0

NOMINAL TENSION STRENGTH (COUPLING BOLT): 100 KIP

|  |   |                             |                 |
|--|---|-----------------------------|-----------------|
| <b>CHANCE</b> <sup>®</sup><br><small>CONFIDENTIAL: THIS DRAWING AND ITS CONTENTS ARE CONFIDENTIAL AND THE EXCLUSIVE PROPERTY OF HUBBELL POWER SYSTEMS, INC. NO PUBLICATION, DISTRIBUTION, OR COPIES MAY BE MADE WITHOUT THE WRITTEN CONSENT OF HUBBELL POWER SYSTEMS, INC. HUBBELL POWER SYSTEMS UNPUBLISHED ALL RIGHTS RESERVED UNDER THE COPYRIGHT LAWS.</small> | <b>HUBBELL POWER SYSTEMS, INC.</b>  |                             |                 |
|  | TITLE<br><b>LEADS AND EXTENSIONS<br/>                 RS2875.276 HIGH CAPACITY PILE</b> |                             |                 |
| SIZE<br><b>B</b>   | CAT / PART / ASSY NO.<br><b>SEE TABLE</b>   | DWG NO.<br><b>SA2788401</b> | REV<br><b>A</b> |
| DO NOT SCALE THIS DRAWING  | DRN BY APB  | DATE 7/12/19                | SHEET 1 OF 1    |