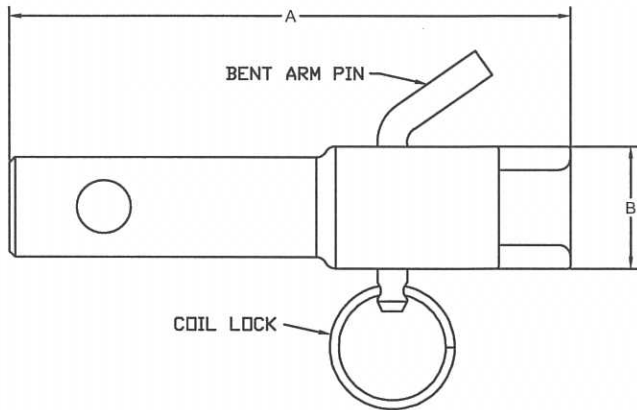
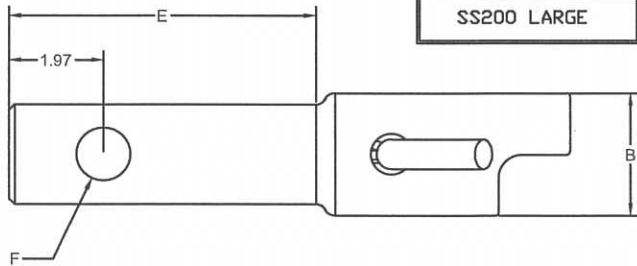
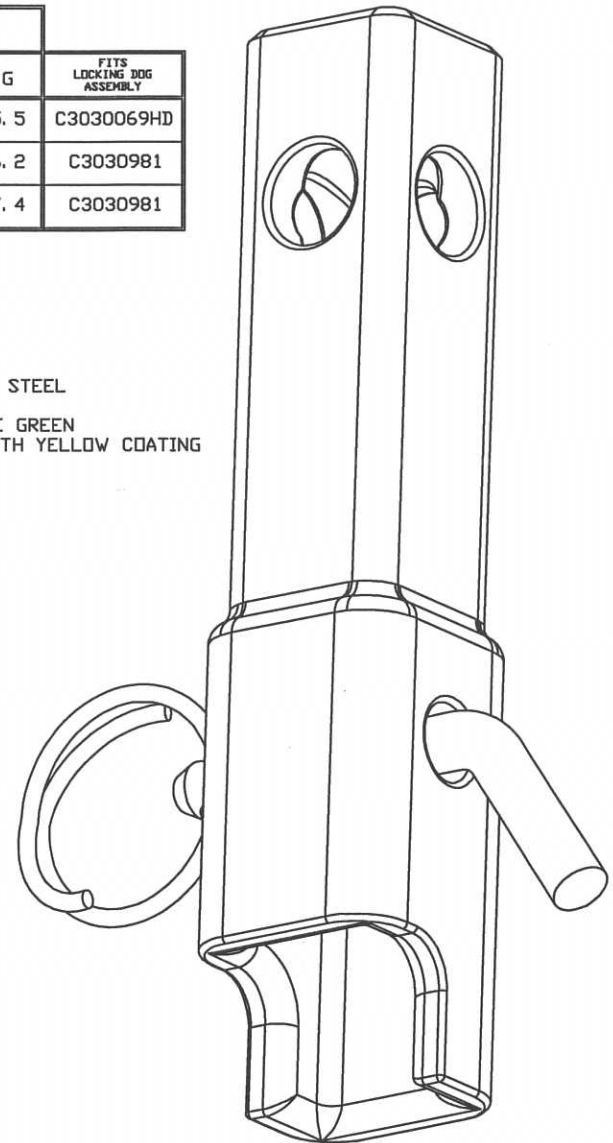
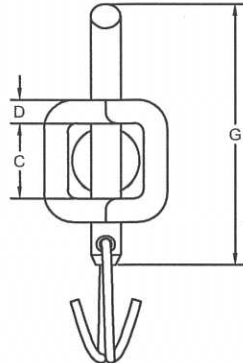


WRENCH TUBE	DIMENSION							FITS LOCKING DOG ASSEMBLY
	A	B	C	D	E	F	G	
SS5 SMALL	11.8	2.6	1.6	0.5	6.4	0.9	5.5	C3030069HD
SS175 LARGE	13.7	3.6	1.8	0.9	6.3	1.1	6.2	C3030981
SS200 LARGE	13.7	3.6	2.1	0.8	6.3	1.3	7.4	C3030981



- \* \* NOTES \* \*
- MAT'L:  
 TOOL BODY - CAST STEEL  
 COIL LOCK - SPRING STEEL  
 BENT ARM PIN - COLD DRAWN STEEL
  - FINISH:  
 TOOL BODY - PAINTED SPRUCE GREEN  
 COIL LOCK - ZINC PLATED WITH YELLOW COATING  
 BENT ARM PIN - ZINC PLATED



CATALOG NUMBER	FAMILY	INCLUDES
C3030020	SS5/SS150	SS5/ SS150 DRIVE TOOL, COIL LOCK & BENT ARM PIN
C3031226	SS5/SS150	BENT ARM PIN & COIL LOCK
T3031403	SS175	SS175 DRIVE TOOL, COIL LOCK & BENT ARM PIN
C3031225	SS175	BENT ARM PIN & COIL LOCK
C3031077	SS200	SS200 DRIVE TOOL, COIL LOCK & BENT ARM PIN
C3031224	SS200	BENT ARM PIN & COIL LOCK

CHANCE TOLERANCE CHART		HUBBELL POWER SYSTEMS	
CONFIDENTIAL: THIS DRAWING AND ITS CONTENTS ARE CONFIDENTIAL AND THE EXCLUSIVE PROPERTY OF HUBBELL POWER SYSTEMS. NO REPRODUCTION, DISTRIBUTION OR COPIES MAY BE MADE WITHOUT THE WRITTEN CONSENT OF HUBBELL POWER SYSTEMS. HUBBELL POWER SYSTEMS UNPUBLISHED. ALL RIGHTS RESERVED UNDER THE COPYRIGHT LAWS.		TITLE SQUARE SHAFT (SS) DRIVE TOOL	
SIZE B	DWG NO. SA3030020	CAT / PART / ASST NO. SEE CHART	REV A
DO NOT SCALE THIS DRAWING	DWG BY TMK	DATE 11/6/12	SHEET 1/1