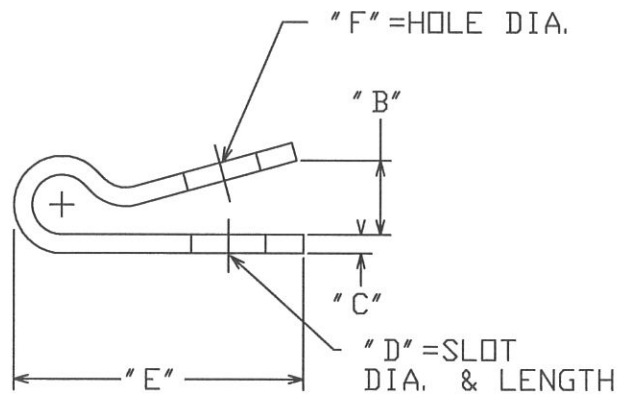
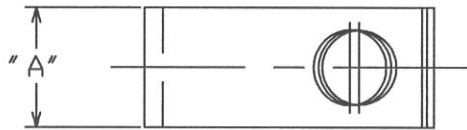



CAT. NO.	BOLT SIZE	" A "	" B "	" C "	" D "	" E "	" F "
3539	1/2	1.00	.62	5/32 STK	.62 X .75	2.44	.63
3540	5/8	1.75	.62	1/4 STK	.75 X .88	3.75	.75
3541	3/4	1.75	.62	1/4 STK	.88 X 1.00	3.75	.88
C205-0436	7/8	1.75	.62	1/4 STK	1.00 X 1.13	3.75	1.00
C205-0438	1	1.75	.62	1/4 STK	1.12 X 1.25	3.75	1.12



==NOTES==

1. MAT'L: HOT ROLLED STEEL,
PER ASTM A568
2. FINISH: HOT DIP GALVANIZED,
PER ASTM. A153 (LATEST REVISION).

CHANCE TOLERANCE CHART		 HUBBELL POWER SYSTEMS <small>POWER SYSTEMS, INC.</small>	
CONFIDENTIAL: THIS DRAWING AND ITS CONTENTS ARE CONFIDENTIAL AND THE EXCLUSIVE PROPERTY OF HUBBELL POWER SYSTEMS. NO PUBLICATION, DISTRIBUTION OR COPIES MAY BE MADE WITHOUT THE WRITTEN CONSENT OF HUBBELL POWER SYSTEMS. HUBBELL POWER SYSTEMS UNPUBLISHED ALL RIGHTS RESERVED UNDER THE COPYRIGHT LAWS.		TITLE SPRING CLIP WASHER	
SIZE	DWG NO.	CAT / PART / ASSY NO.	REV
SB	SA3539	SEE CHART	D
DO NOT SCALE THIS DRAWING	DRN BY JONES	DATE 01/09/91	SHEET 01 OF 01