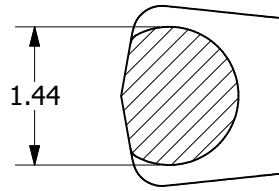
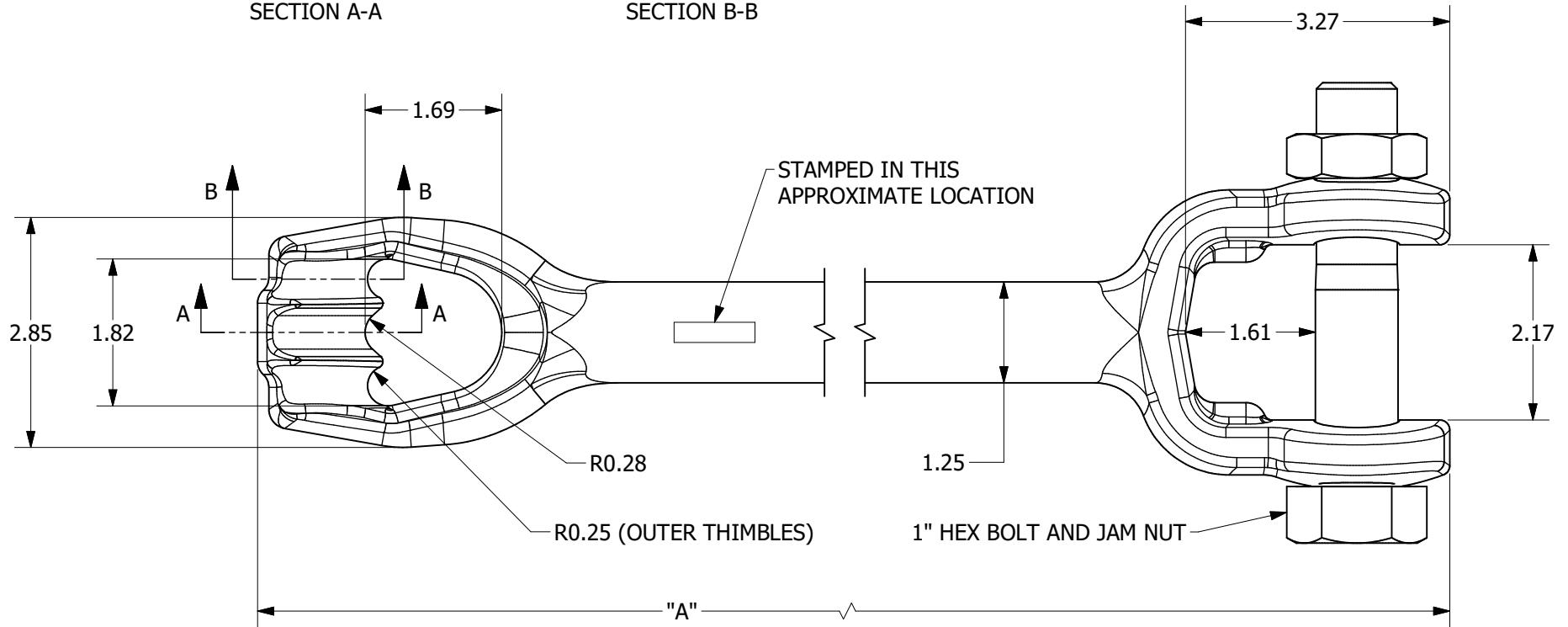


SECTION A-A



SECTION B-B



CATALOG NO.	DESCRIPTION	"A"	STAMP
4022	2 FT TRIPLEYE EXTENSION ROD	27.5	C-1 1/4-2X
PS4023	3 FT TRIPLEYE EXTENSION ROD	36	C-1 1/4-3X
402	6 FT TRIPLEYE EXTENSION ROD	69	C-1 1/4-6X

NOTES:

1. ULTIMATE TENSION CAPACITY RATING: 58,000 LB. FAILURE TO ALIGN ROD WITHIN 5 DEGREES OF GUY LOAD MAY SIGNIFICANTLY REDUCE CAPACITY.
2. ROD MATERIAL: LOW CARBON STEEL.
3. FINISH: HOT-DIP GALVANIZED PER ASTM A153 (LATEST REVISION).
4. ROD STAMPED AS SHOWN IN TABLE.

	HUBBELL POWER SYSTEMS, INC.			
	TITLE 1-1/4" TRIPLEYE EXTENSION ROD			
CONFIDENTIAL: THIS DRAWING AND ITS CONTENTS ARE CONFIDENTIAL AND THE EXCLUSIVE PROPERTY OF HUBBELL POWER SYSTEMS. NO PUBLICATION, DISTRIBUTION, OR COPIES MAY BE MADE WITHOUT THE WRITTEN CONSENT OF HUBBELL POWER SYSTEMS. HUBBELL POWER SYSTEMS UNPUBLISHED ALL RIGHTS RESERVED UNDER THE COPYRIGHT LAWS.	SIZE C	CAT / PART / ASSY NO. SEE TABLE	DWG NO. SA402	REV E
DO NOT SCALE THIS DRAWING	DRN BY GWY	DATE 4/26/22	SHEET 1 OF 1	