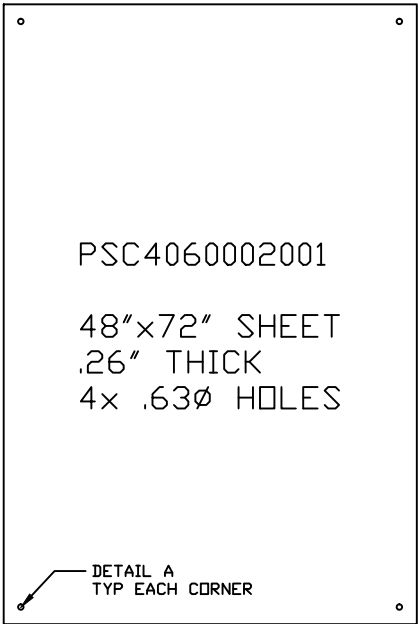
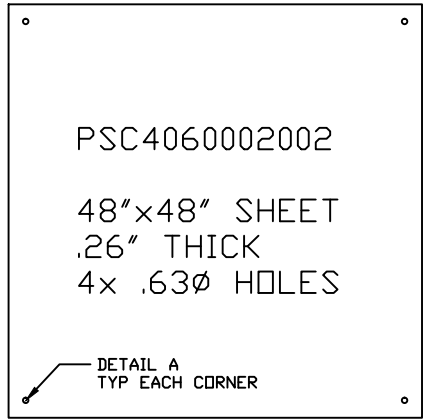


C4060002
 48"x72" SHEET
 .26" THICK



PSC4060002001
 48"x72" SHEET
 .26" THICK
 4x .63Ø HOLES

DETAIL A
 TYP EACH CORNER



PSC4060002002
 48"x48" SHEET
 .26" THICK
 4x .63Ø HOLES

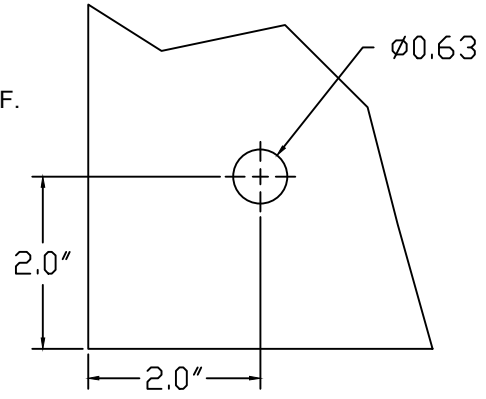
DETAIL A
 TYP EACH CORNER



PSC4060002004
 24"x36" SHEET
 .26" THICK
 4x .63Ø HOLES

DETAIL A
 TYP EACH CORNER

- TESTED TO ASTM F712.
- COLOR: ORANGE
- CAN BE CUT INTO SMALLER, CUSTOMIZED PIECES.
- CAN BE FORMED VIA BLOW TORCH OR HEATED TO 250°F.
- WILL NOT SOFTEN OR DEFORM AT 170°F.
- MATERIAL DOES NOT FLASH FLAME.
- PUNCTURE STRENGTH: 300 VOLTS PER MIL.



DETAIL A

CHANCE TOLERANCE CHART		HUBBELL POWER SYSTEMS	
CONFIDENTIAL: THIS DRAWING AND ITS CONTENTS ARE CONFIDENTIAL AND THE EXCLUSIVE PROPERTY OF HUBBELL POWER SYSTEMS. NO PUBLICATION, DISTRIBUTION OR COPIES MAY BE MADE WITHOUT THE WRITTEN CONSENT OF HUBBELL POWER SYSTEMS. HUBBELL POWER SYSTEMS UNPUBLISHED ALL RIGHTS RESERVED UNDER THE COPYRIGHT LAWS.		ORANGE POLYETHYLENE SHEET	
SIZE	DWG NO.	CAT / PART / ASSY NO.	REV
C	SA406-0003	SEE CHART	A
DO NOT SCALE THIS DRAWING	DRN BY UTME	DATE 6-15-11	SHEET 1 OF 1