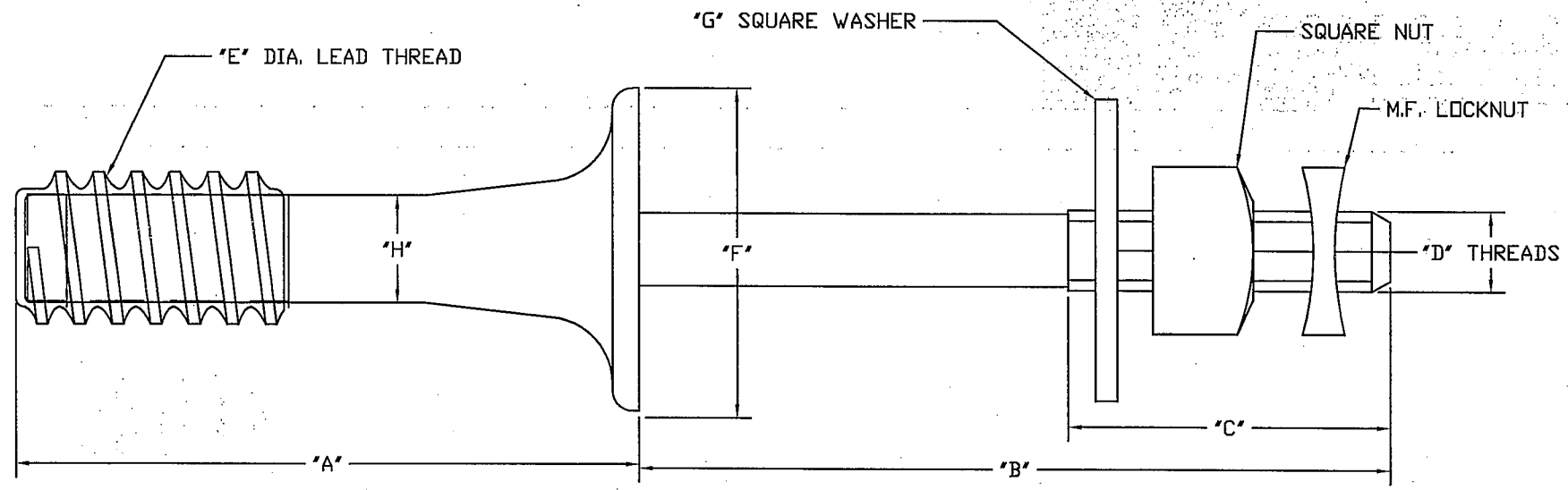



--NOTE--

1. MATERIAL: STEEL, HOT DIP GALVANIZED PER ASTM A153 (LATEST REVISION).



CATALOG NUMBER	DESCRIPTION	"A"	"B"	"C"	"D"	"E"	"F"	"G"	"H"
4326	FORGED STEEL PIN ASSY	6.9	7.0	3.0	3/4-10UNC	1-3/8"	3.0	3.0	1.0
4328	FORGED STEEL PIN ASSY	7.9	7.0	3.0	3/4-10UNC	1-3/8"	3.0	3.0	1.0
4332	FORGED STEEL PIN ASSY	9.9	7.0	3.0	3/4-10UNC	1-3/8"	3.5	3.0	1.1

<b>CHANCE</b> TOLERANCE CHART		 <b>HUBBELL POWER SYSTEMS</b>	
<small>CONFIDENTIAL: THIS DRAWING AND ITS CONTENTS ARE CONFIDENTIAL AND THE EXCLUSIVE PROPERTY OF HUBBELL POWER SYSTEMS. NO PUBLICATION, DISTRIBUTION OR COPIES MAY BE MADE WITHOUT THE WRITTEN CONSENT OF HUBBELL POWER SYSTEMS. HUBBELL POWER SYSTEMS UNPUBLISHED. ALL RIGHTS RESERVED UNDER THE COPYRIGHT LAWS.</small>		TITLE <b>LEAD THREAD FORGED STEEL PIN ASSY.</b>	
SIZE <b>SB SA4326</b>	DWG NO. <b>SEE CHART</b>	CAT / PART / ASSY NO. <b>SEE CHART</b>	REV <b>--</b>
DO NOT SCALE THIS DRAWING	DRN BY LURKINS	DATE 09/18/09	SHEET 01 OF 01