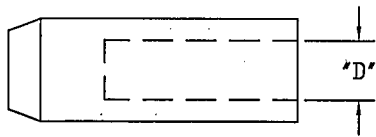
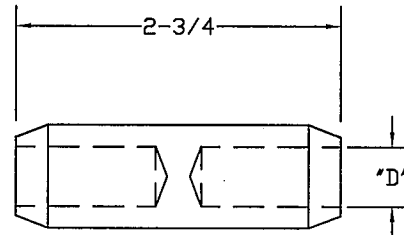


DRIVE HEADS



CATALOG NUMBER	NOMINAL DIAMETER "D"
CDH58	5/8

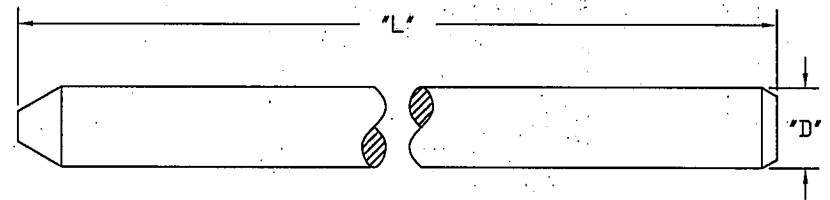
COUPLERS



UNTHREADED

CATALOG NUMBER	NOMINAL DIAMETER "D"
CCC12	1/2
CCC58	5/8

GROUND RODS



UNTHREADED

CATALOG NUMBER	LENGTH "L"	NOMINAL DIAMETER "D"
C611355	5 FT.	1/2
C611365	6 FT.	1/2
C611385	8 FT.	1/2
C615855	5 FT.	5/8
C615865	6 FT.	5/8
C615885	8 FT.	5/8

==NOTE==

1. ALL GROUND RODS AND COUPLERS MEET ANSI/NEMA 6R1, EXCEPT THE MINIMUM COPPER THICKNESS IS .005.

CHANCE TOLERANCE CHART EC 06827		HUBBELL POWER SYSTEMS POWER SYSTEMS, INC.	
CONFIDENTIAL- THIS DRAWING AND ITS CONTENTS ARE CONFIDENTIAL AND THE EXCLUSIVE PROPERTY OF HUBBELL POWER SYSTEMS. NO PUBLICATION, DISTRIBUTION OR COPIES MAY BE MADE WITHOUT THE WRITTEN CONSENT OF HUBBELL POWER SYSTEMS. HUBBELL POWER SYSTEMS UNPUBLISHED ALL RIGHTS RESERVED UNDER THE COPYRIGHT LAWS.			
TITLE 5 MIL CU THICKNESS GROUND RODS		CAT / PART / ASSY NO. SEE CHARTS	
SIZE DO NOT SCALE THIS DRAWING	DWG NO. SB SA611355	DRN BY JJL	DATE 04/24/08
		SHEET 01 OF 01	REV --