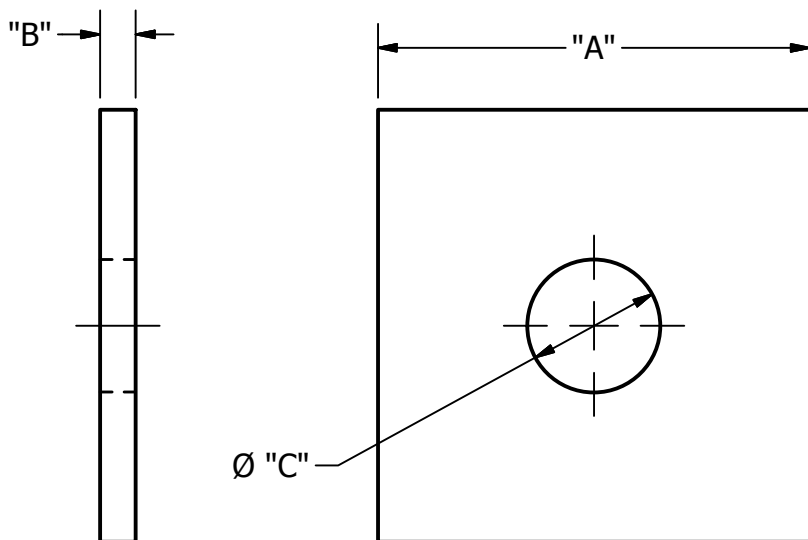
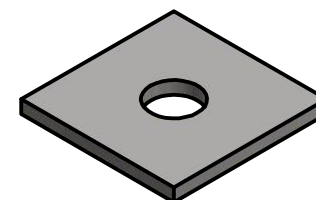


-NOTES-

1. MATERIAL: STEEL, HOT DIP GALV. PER ASTM A153 (LATEST REV).
2. CATALOG NUMBERS WITH A "USA" SUFFIX HAVE ALL COMPONENTS MELTED AND MANUFACTURED IN THE USA.



CATALOG NO.	USA PART NO.	"A"	"B"	"C"
6812	6812USA	2	1/8	11/16
6813	6813USA	2-1/4	1/8	11/16
6814	6814USA	2-1/4	5/32	13/16
400285714	-	4	1/2	1-3/16

<h1>CHANCE<sup>®</sup></h1>	<b>HUBBELL POWER SYSTEMS, INC.</b>			
	TITLE <h2>SQUARE WASHER</h2>			
CONFIDENTIAL: THIS DRAWING AND ITS CONTENTS ARE CONFIDENTIAL AND THE EXCLUSIVE PROPERTY OF HUBBELL POWER SYSTEMS. NO PUBLICATION, DISTRIBUTION, OR COPIES MAY BE MADE WITHOUT THE WRITTEN CONSENT OF HUBBELL POWER SYSTEMS. HUBBELL POWER SYSTEMS UNPUBLISHED ALL RIGHTS RESERVED UNDER THE COPYRIGHT LAWS.	SIZE <b>A</b>	CAT / PART / ASSY NO. <b>6813</b>	DWG NO. <b>SA6813</b>	REV <b>B</b>
	DO NOT SCALE THIS DRAWING	DRN BY FOSTER	DATE 09/25/18	SHEET 1 OF 1