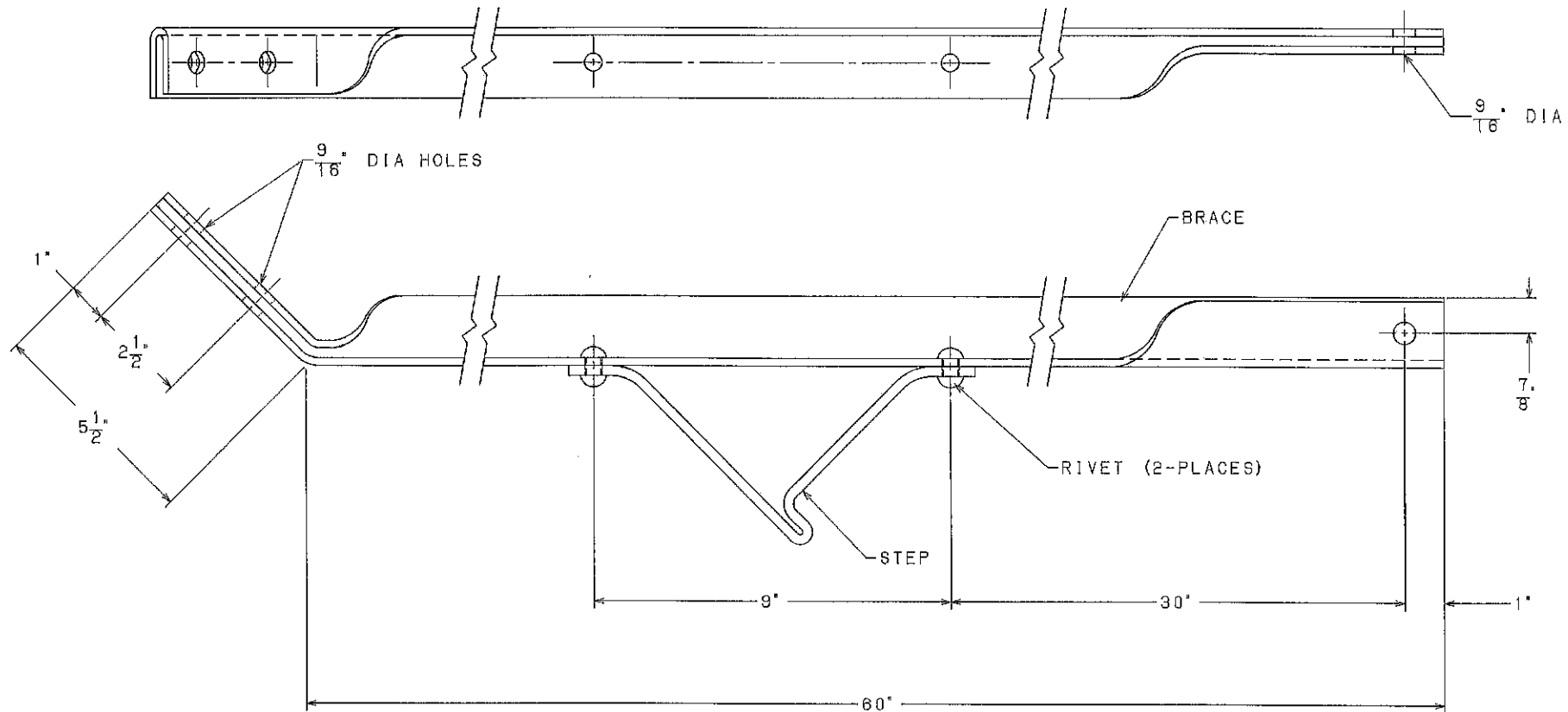


==NOTES==

1. MAT'L: STEEL ANGLE 1-3/4" X 1-3/4" X 3/16".
2. HOT DIP GALVANIZED PER ASTM A163 (LATEST REVISION).



CATALOG NUMBER
C6979

LATEST EC NO:		REV.	DATE	CHANGED BY	RESP ENGINEER
EC99042609		-	----	----	ODOM
DO NOT SCALE THIS DWG				THIRD ANGLE PROJECTION	
ISO DUAL DIMENSIONS IN=INCH, MM=MILLIMETER				1:20	
DRN BY:	DATE	TITLE:		C	
MARTIN	10-07-02	ALLEY ARM BRACE			
HUBBELL POWER SYSTEMS		CHANCE		DWG NO: SA6979	

CONFIDENTIAL: THIS DRAWING AND ITS CONTENTS ARE CONFIDENTIAL AND THE EXCLUSIVE PROPERTY OF HUBBELL / A. B. CHANCE COMPANY. NO PUBLICATION, DISTRIBUTION OR COPIES MAY BE MADE WITHOUT WRITTEN CONSENT BY HUBBELL / A. B. CHANCE COMPANY. © 2000 HUBBELL/A. B. CHANCE. UNPUBLISHED - ALL RIGHTS RESERVED UNDER THE COPYRIGHT LAWS