

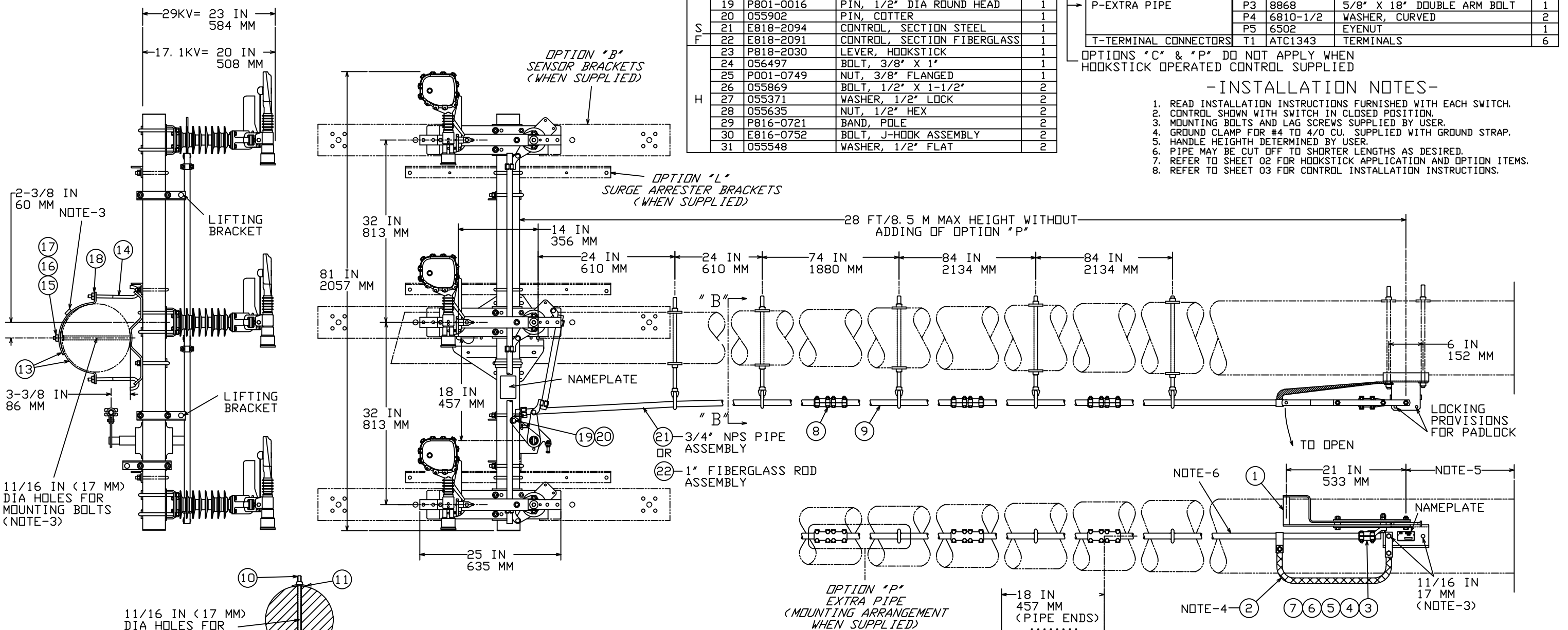
POSITION 3 CONTROLS			
ITEM	PART NUMBER	DESCRIPTION	QUAN
1	E801-1970	HANDLE, ASSEMBLY	1
2	E801-2031	STRAP, GROUND ASSEMBLY	1
3	P801-2006	CLEVIS, HANDLE	1
4	P801-1975	CAP	1
5	058536	BOLT, 3/8" X 1-3/4"	4
6	055493	WASHER, 3/8" LOCK	4
7	056962	NUT, 3/8" HEX	4
8	E801-2030	COUPLING, ASSEMBLY	3
9	P801-1982	PIPE, 3/4" NPS X 85'	3
10	8868	5/8" X 18" DOUBLE ARM BOLT	5
11	6810-1/2	WASHER, CURVED	10
12	6502	EYENUT	5
13	P816-0721	BAND, POLE	2
14	E816-0752	BOLT, J-HOOK ASSEMBLY	2
15	055869	BOLT, 1/2" X 1-1/2" HEX	1
16	055371	WASHER, 1/2" LOCK	1
17	055635	NUT, 1/2" HEX	1
18	055548	WASHER, 1/2" FLAT	2
19	P801-0016	PIN, 1/2" DIA ROUND HEAD	1
20	055902	PIN, COTTER	1
21	E818-2094	CONTROL, SECTION STEEL	1
22	E818-2091	CONTROL, SECTION FIBERGLASS	1
23	P818-2030	LEVER, HOOKSTICK	1
24	056497	BOLT, 3/8" X 1"	1
25	P001-0749	NUT, 3/8" FLANGED	1
26	055869	BOLT, 1/2" X 1-1/2"	2
27	055371	WASHER, 1/2" LOCK	2
28	055635	NUT, 1/2" HEX	2
29	P816-0721	BAND, POLE	2
30	E816-0752	BOLT, J-HOOK ASSEMBLY	2
31	055548	WASHER, 1/2" FLAT	2

POSITIONS 4 THRU 11 OPTIONS				
	ITEM	PART NO	DESCRIPTION	QTY
B-SENSOR BRACKETS	B1	E818-1621	KIT, SENSOR MOUNTING	1
C-CONTROL INSULATOR	C1	E818-2054	INSULATOR, CONTROL	1
	C2	E801-2030	COUPLING, ASSEMBLY	1
	G1	SWL-025-B	TERMINAL, BRZ BOLTED CABLE	6
G-TERMINAL CONNECTORS	G2	P815-0025	BOLT, 1/2" CAPTIVE	12
	G3	055634	NUT, 1/2" HEX	12
	G4	058883	WASHER, 1/2" FLAT	12
H-CAPTIVE HARDWARE	H1	P815-0025	BOLT, 1/2" CAPTIVE	12
	H2	055634	NUT, 1/2" HEX	12
	H3	058883	WASHER, 1/2" FLAT	12
	L1	P801-3468	BRACKET, SA	3
L-SURGE ARRESTER BRACKETS	L2	P816-0658	BOLT, MOUNTING	3
	L3	055548	WASHER, 1/2" FLAT	6
	L4	055371	WASHER, 1/2" SPRING LOCK	12
	L5	055635	NUT, 1/2" HEX	12
	L6	055545	BOLT, 1/2" X 2" HEX	6
P-EXTRA PIPE	P1	E801-2030	COUPLING, ASSEMBLY	1
	P2	P801-1982	PIPE, 3/4" NPS X 85'	1
	P3	8868	5/8" X 18" DOUBLE ARM BOLT	1
	P4	6810-1/2	WASHER, CURVED	2
	P5	6502	EYENUT	1
T-TERMINAL CONNECTORS	T1	ATC1343	TERMINALS	6

OPTIONS "C" & "P" DO NOT APPLY WHEN HOOKSTICK OPERATED CONTROL SUPPLIED

-INSTALLATION NOTES-

1. READ INSTALLATION INSTRUCTIONS FURNISHED WITH EACH SWITCH.
2. CONTROL SHOWN WITH SWITCH IN CLOSED POSITION.
3. MOUNTING BOLTS AND LAG SCREWS SUPPLIED BY USER.
4. GROUND CLAMP FOR #4 TO 4/0 CU. SUPPLIED WITH GROUND STRAP.
5. HANDLE HEIGHT DETERMINED BY USER.
6. PIPE MAY BE CUT OFF TO SHORTER LENGTHS AS DESIRED.
7. REFER TO SHEET 02 FOR HOOKSTICK APPLICATION AND OPTION ITEMS.
8. REFER TO SHEET 03 FOR CONTROL INSTALLATION INSTRUCTIONS.



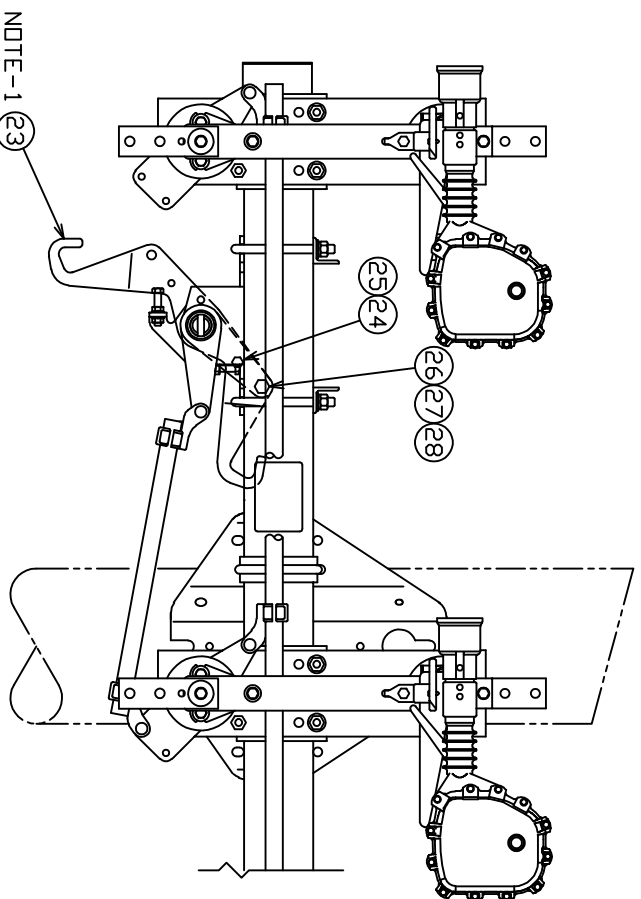
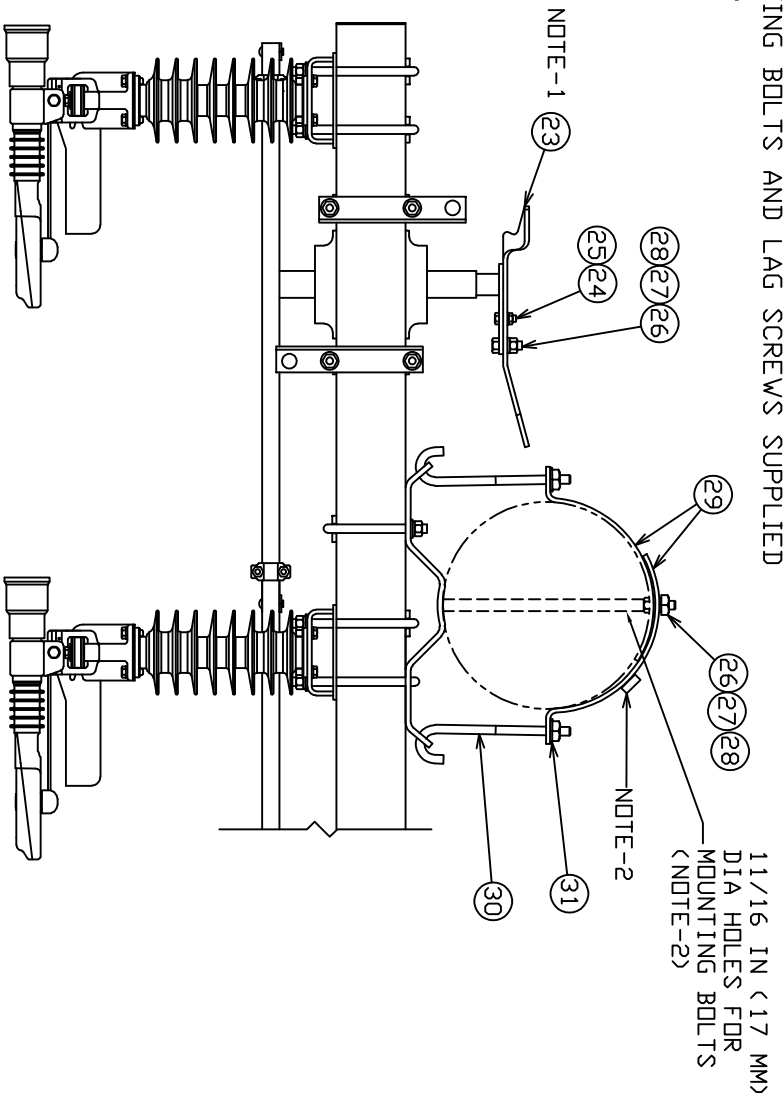
CONTROL "S" AND "F" SHOWN

NOTE: 28 FT/8.5 M OF PIPE SUPPLIED AS STANDARD WITH "S" OR "F" CONTROL. FOR ADDITIONAL PIPE SEE OPTION P

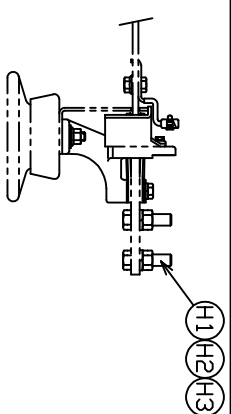
OPTION "C" CONTROL INSULATOR (CUT CONTROL PIPE IF REQUIRED AND ASSEMBLE INSULATOR TO PIPE USING A COUPLING ASSEMBLY ON EACH END)

CHANCE TOLERANCE CHART EC 200713110446	HUBBELL POWER SYSTEMS DRAWING, SWITCH CONTROL
CONFIDENTIAL: THIS DRAWING AND ITS CONTENTS ARE CONFIDENTIAL AND THE EXCLUSIVE PROPERTY OF HUBBELL POWER SYSTEMS. NO PUBLICATION, DISTRIBUTION OR COPIES MAY BE MADE WITHOUT THE WRITTEN CONSENT OF HUBBELL POWER SYSTEMS. HUBBELL POWER SYSTEMS UNPUBLISHED. ALL RIGHTS RESERVED UNDER THE COPYRIGHT LAWS.	SIZE DWG NO. D SAAR12-S&F CAT / PART / ASSY NO. SEE CHART REV F
DO NOT SCALE THIS DRAWING	DRN BY GBR DATE 03/27/03 SHEET 01 OF 03

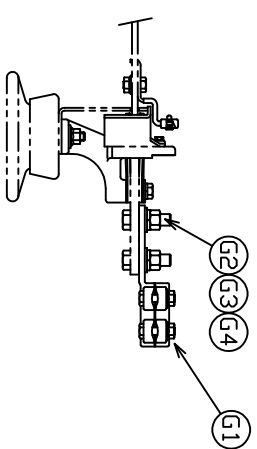
- ==NOTE==  
 1. HOOKSTICK LEVER (ITEM-23) TO BE ATTACHED IN FIELD WITH HARDWARE PROVIDED.  
 2. MOUNTING BOLTS AND LAG SCREWS SUPPLIED BY USER.



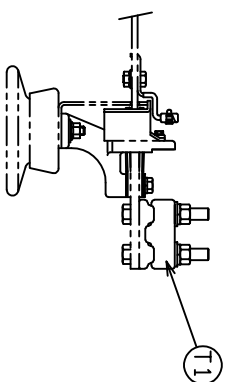
CONTROL "H"  
 HOOKSTICK OPERATED



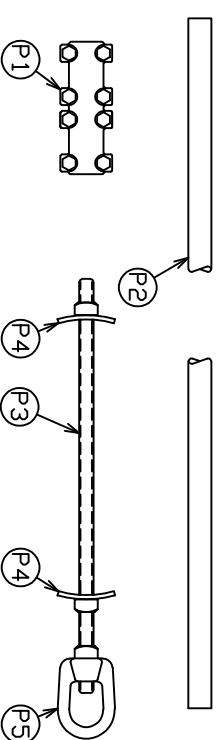
OPTION "H"  
 CAPTIVE HARDWARE  
 (TYPICAL 6 TERMINAL PADS)



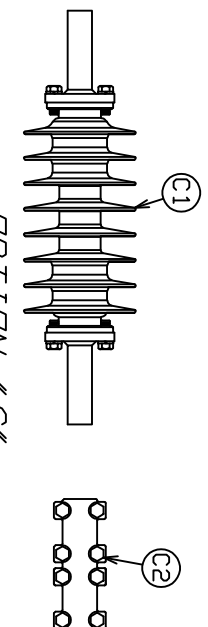
OPTION "G"  
 TERMINAL CONNECTOR  
 (BRONZE STRAIGHT BOLT TERMINAL CABLE TO FLAT TYPE SWL)



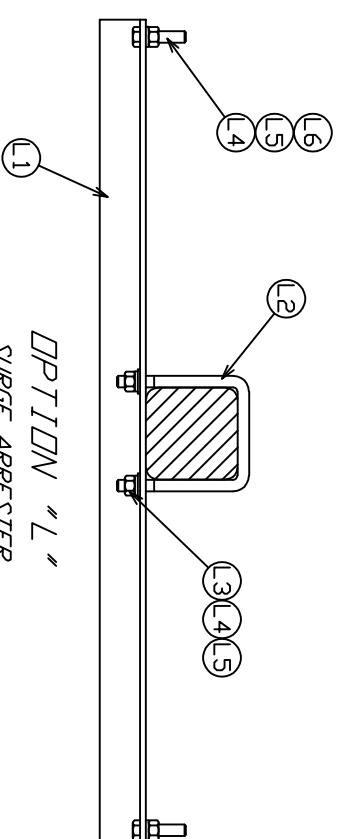
OPTION "T"  
 TERMINAL CONNECTOR  
 (PARALLEL GROOVE TERMINAL ASSEMBLY FOR #2-500 KCMIL) (TYPICAL 6 TERMINAL PADS)



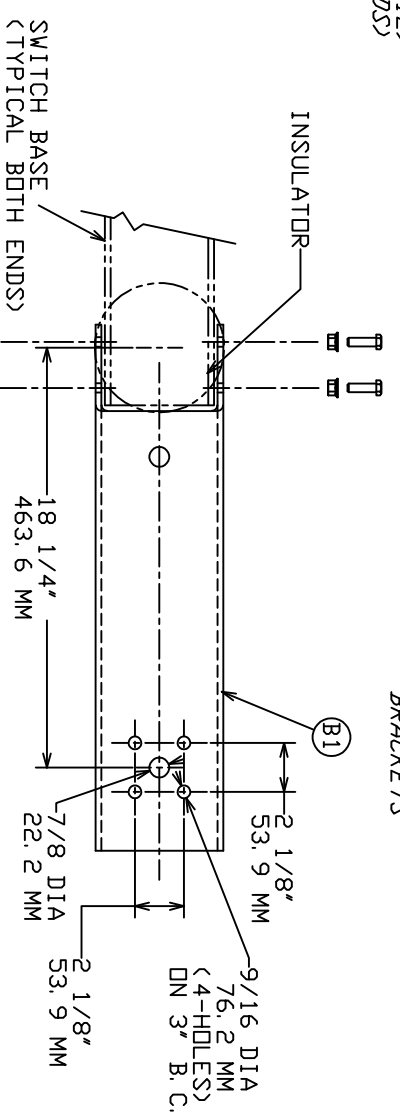
OPTION "P"  
 ADDITIONAL 7 FT/2134 MM OF CONTROL PARTS  
 (NOT AVAILABLE WITH HOOKSTICK OPERATED CONTROL)



OPTION "C"  
 CONTROL INSULATOR  
 (NOT AVAILABLE WITH HOOKSTICK OPERATED CONTROL)



OPTION "L"  
 SURGE ARRESTER  
 BRACKETS



OPTION "B"  
 SENSOR BRACKETS

CHANCE  
 TOLERANCE CHART  
 EC 200713110446

HUBBELL POWER SYSTEMS  
 DRAWING,  
 SWITCH CONTROL

CONFIDENTIAL: THIS DRAWING AND ITS CONTENTS ARE CONFIDENTIAL AND THE EXCLUSIVE PROPERTY OF HUBBELL POWER SYSTEMS. NO REPRODUCTION, DISTRIBUTION OR DISSEMINATION OF THIS DRAWING OR INFORMATION CONTAINED HEREIN IS PERMITTED WITHOUT THE WRITTEN PERMISSION OF HUBBELL POWER SYSTEMS. UNPUBLISHED. ALL RIGHTS RESERVED UNDER THE COPYRIGHT LAWS.		DO NOT SCALE THIS DRAWING	
SIZE	DWG NO.	CAT / PART / ASSY NO.	REV
D	SAR12-S&F	SEE SHEET 1	F
DRN BY	DATE	SHEET	OF
GBR	03/27/03	02	03

# IMPORTANT NOTICE FOR S&F CONTROLS

THIS INSTALLATION INSTRUCTION SUPPLEMENT SHEET SUPERSEDES THE FOLLOWING INSTRUCTION SECTIONS AND PAGES AS DESCRIBED IN MANUAL P818-2040 REV A, (MANUAL P818-2040 SUPPLIED WITH ALL "AR" SWITCHES)

--SECTION 49(PAGE 13) RECEIVING & HANDLING  
--SECTION 66(PAGES 22 & 23) CONTROL INSTALLATION

## RECEIVING & HANDLING

COMPARE VERTICAL CONTROL COMPONENTS WITH MATERIAL LIST (SHEET 01) TO BE SURE ALL ITEMS ARE INCLUDED. CONTACT YOUR FACTORY REPRESENTATIVE IF PARTS ARE MISSING.

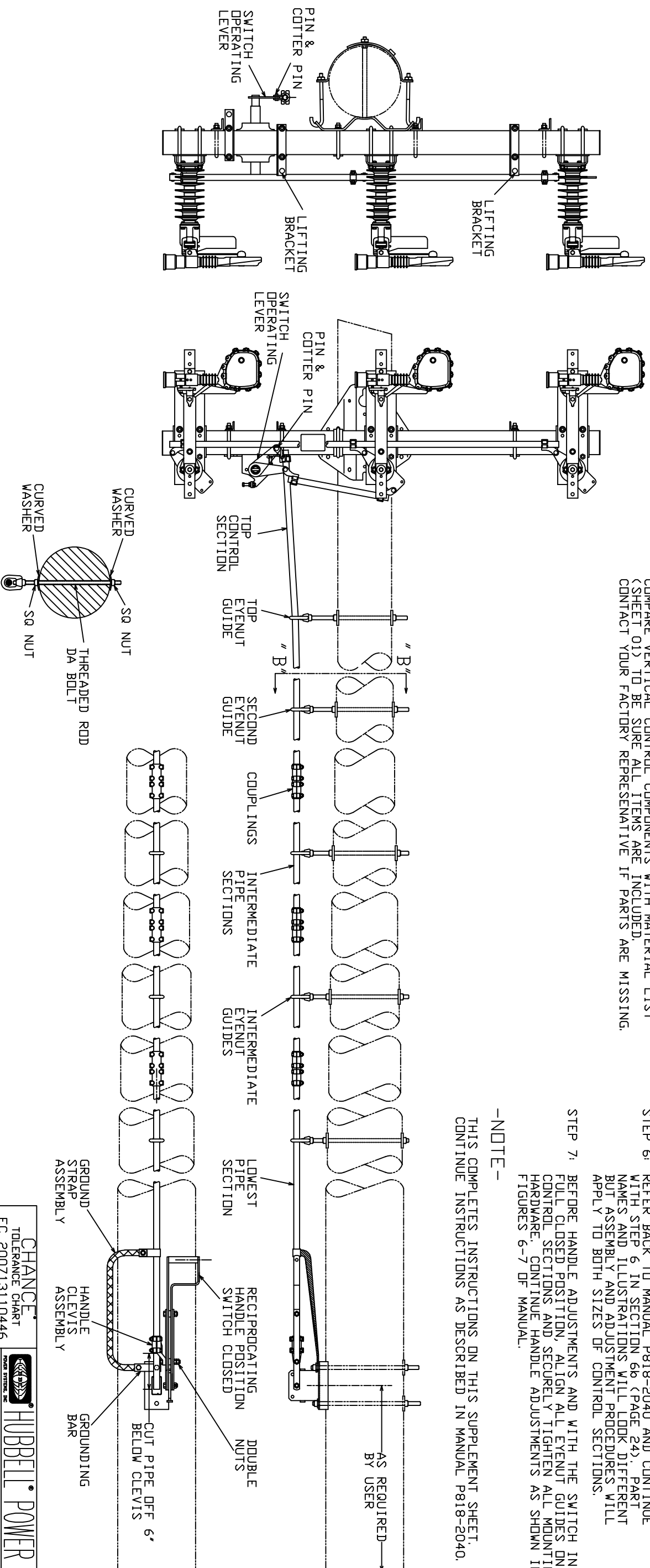
## CONTROL INSTALLATION

(REFER TO SHEET 01 FOR VERTICAL CONTROL INSTALLATION)

- STEP 1: ASSEMBLE TOP CONTROL SECTION TO SWITCH OPERATING LEVER WITH PIN AND COTTER PIN.
- STEP 2: LOCATE AND DRILL 11/16" DIA HOLES ON THE POLE CENTERLINE FOR TOP AND SECOND EYENUT GUIDES.
- STEP 3: SLIDE THE TOP EYENUT GUIDE UP FROM BOTTOM OF THE TOP CONTROL SECTION TO THE TOP DRILLED HOLE LOCATION. ASSEMBLE D A BOLT AND HARDWARE AS SHOWN IN "B-B" & "C-C", LEAVE HARDWARE LOOSE FOR LATER ADJUSTMENTS. REPEAT FOR SECOND EYENUT GUIDE.
- STEP 4: LOCATE AND DRILL 11/16" DIA HOLES ON THE POLE CENTERLINE FOR INTERMEDIATE EYENUT GUIDES DOWN THE POLE TO THE HANDLE BRACKET. ASSEMBLE AND LEAVE HARDWARE LOOSE FOR LATER ADJUSTMENTS.
- STEP 5: INSTALL AND CONNECT ALL REMAINING PIPE SECTIONS AND COUPLINGS AS SHOWN IN "C-C", BUT ENDS OF PIPE TOGETHER CENTERED WITHIN EACH COUPLING. SECURELY TIGHTEN ALL CLAMPING HARDWARE.
- STEP 6: REFER BACK TO MANUAL P818-2040 AND CONTINUE WITH STEP 6 IN SECTION 66 (PAGE 24). PART NAMES AND ILLUSTRATIONS WILL LOOK DIFFERENT BUT ASSEMBLY AND ADJUSTMENT PROCEDURES WILL APPLY TO BOTH SIZES OF CONTROL SECTIONS.
- STEP 7: BEFORE HANDLE ADJUSTMENTS AND WITH THE SWITCH IN FULL CLOSED POSITION, ALIGN ALL EYENUT GUIDES ON CONTROL SECTIONS AND SECURELY TIGHTEN ALL MOUNTING HARDWARE. CONTINUE HANDLE ADJUSTMENTS AS SHOWN IN FIGURES 6-7 OF MANUAL.

-NOTE-

THIS COMPLETES INSTRUCTIONS ON THIS SUPPLEMENT SHEET. CONTINUE INSTRUCTIONS AS DESCRIBED IN MANUAL P818-2040.



SECTION "B-B"  
(TYPICAL ALL GUIDE LOCATIONS)

CHANGE  
TOLERANCE CHART  
EC 200713110446

HUBBELL POWER SYSTEMS  
DRAWING,  
SWITCH CONTROL

CONFIDENTIAL: THIS DRAWING AND ITS CONTENTS ARE CONFIDENTIAL AND THE POWER SYSTEMS, NO PUBLICATION, DISTRIBUTION OR COPIES MAY BE MADE WITHOUT THE WRITTEN CONSENT OF HUBBELL POWER SYSTEMS. UNPUBLISHED HUBBELL POWER SYSTEMS. ALL RIGHTS RESERVED UNDER THE COPYRIGHT LAWS.		SIZE	DMG NO.	CAT / PART / ASSY NO.	REV
DO NOT SCALE THIS DRAWING	D	SAAR12-S&F	SEE SHEET 1	F	
	DRN BY	GBR	DATE	03/27/03	SHEET 03 OF 03