

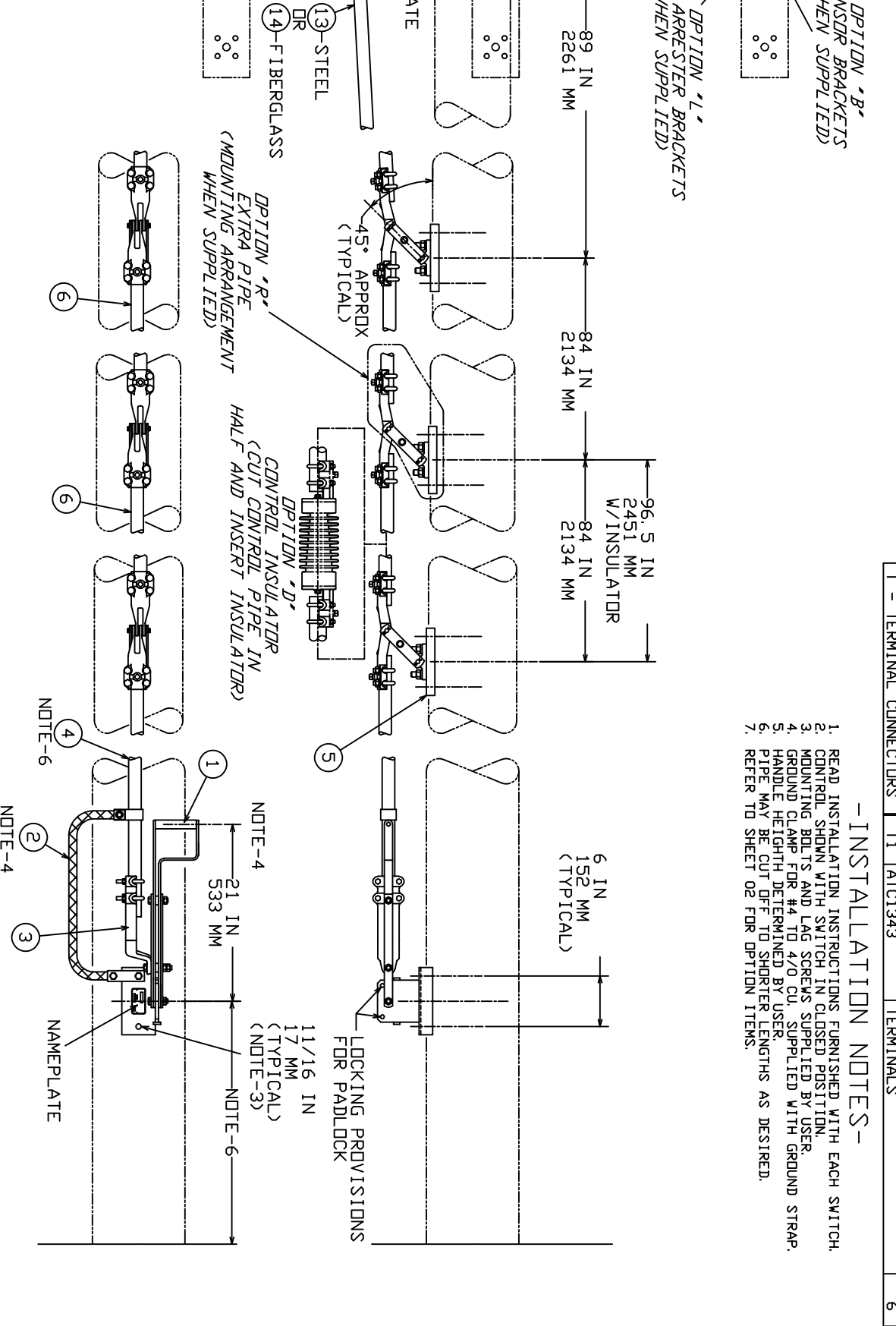
POSITION 3 CONTROLS

ITEM	PART NUMBER	DESCRIPTION	QUAN
1	E801-1970	HANDLE ASSEMBLY	1
2	091861	STRAP, GROUND ASSEMBLY	1
3	V801-1892	ADAPTER, ROD END ASSEMBLY	1
4	E818-2050	PIPE, LOWER SECTION	1
5	E818-2032	LEVER, STEADY ASSEMBLY	3
6	E818-2051	PIPE, CENTER SECTION	2
7	P816-0721	BAND, POLE	2
8	055869	BOLT, 1/2" X 1-1/2" HEX	1
9	055371	WASHER, 1/2" LOCK	1
10	055635	NUT, 1/2" HEX	1
11	E816-0752	BOLT, J-HOOK ASSEMBLY	2
12	055548	WASHER, 1/2" FLAT	2
13	E818-2064	PIPE, TOP SECTION	1
14	E818-2065	TUBE, FIBERGLASS ASSEMBLY	1

POSITIONS 4 THRU 11 OPTIONS

ITEM	PART NUMBER	DESCRIPTION	QUAN
B1	E818-1621	KIT, SENSOR MOUNTING	1
D1	E801-3397	INSULATOR, CONTROL	1
G1	SWL-025-B	TERMINAL, BRZ BOLTED CABLE	6
G2	P815-0025	BOLT, 1/2" CAPTIVE	12
G3	055634	NUT, 1/2" HEX	12
G4	058883	WASHER, 1/2" FLAT	12
H1	P815-0025	BOLT, 1/2" CAPTIVE	12
H2	055634	NUT, 1/2" HEX	12
H3	058883	WASHER, 1/2" FLAT	12
L1	P801-3468	BRACKET, SA	3
L2	P816-0658	BOLT, MOUNTING	3
L3	055548	WASHER, 1/2" FLAT	6
L4	055371	WASHER, 1/2" SPRING LOCK	12
L5	055635	NUT, 1/2" HEX	12
L6	055545	BOLT, 1/2" X 2" HEX	6
R1	E818-2032	LEVER, STEADY ASSEMBLY	1
R2	E818-2051	PIPE, CENTER SECTION	1
T1	ATC1343	TERMINALS	6

- INSTALLATION NOTES -**
1. READ INSTALLATION INSTRUCTIONS FURNISHED WITH EACH SWITCH.
 2. CONTROL SHOWN WITH SWITCH IN CLOSED POSITION.
 3. MOUNTING BOLTS AND LAG SCREWS SUPPLIED BY USER.
 4. GROUND CLAMP FOR #4 TO 4/0 CU. SUPPLIED WITH GROUND STRAP.
 5. HANDLE HEIGHT DETERMINED BY USER.
 6. PIPE MAY BE CUT OFF TO SHORTER LENGTHS AS DESIRED.
 7. REFER TO SHEET 02 FOR OPTION ITEMS.



CONTROL "T" AND "G" SHOWN

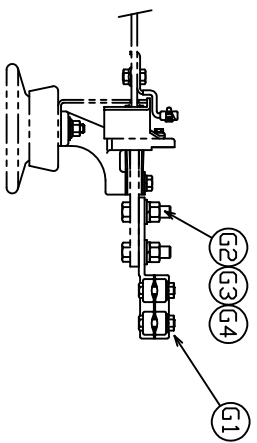
NOTE: 28 FT/8.5 M OF PIPE SUPPLIED AS STANDARD WITH "T" OR "G" CONTROL. FOR ADDITIONAL PIPE SEE OPTION R

CHANCE TOLERANCE CHART
EC 200713110446

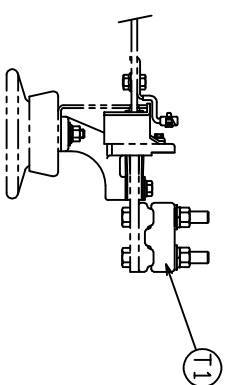
HUBBELL POWER SYSTEMS
DRAWING, SWITCH CONTROL

SIZE DWG NO. CAT / PART / ASSY NO.
D SAAR12-T&G SEE CHART

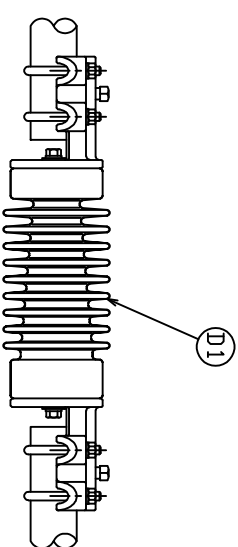
DO NOT SCALE THIS DRAWING DRN BY GBR DATE 03/28/03 SHEET 01 OF 02



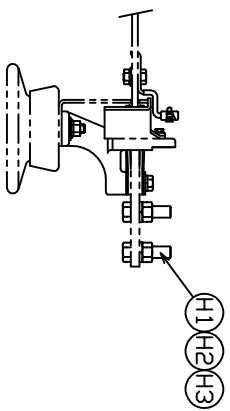
OPTION "G"
 TERMINAL CONNECTOR
 (BRONZE STRAIGHT BOLT TERMINAL
 CABLE TO FLAT TYPE SWL)



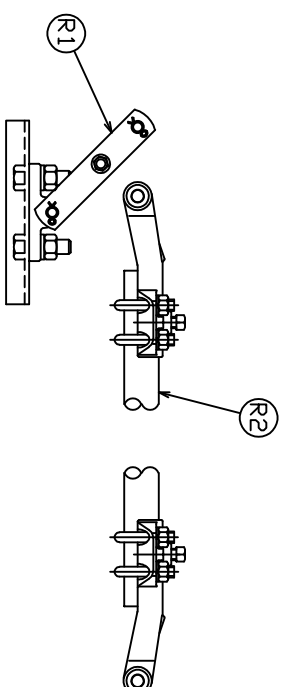
OPTION "T"
 TERMINAL CONNECTOR
 (PARALLEL GROOVE TERMINAL
 ASSEMBLY FOR #2-500 KCMIL)
 (TYPICAL 6 TERMINAL PADS)



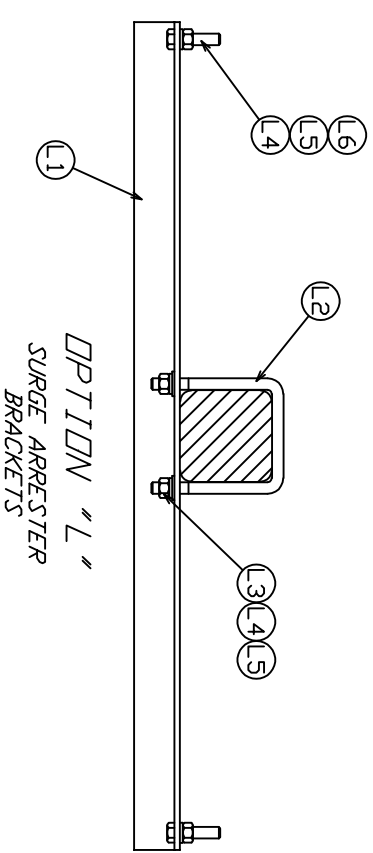
OPTION "D"
 CONTROL INSULATOR



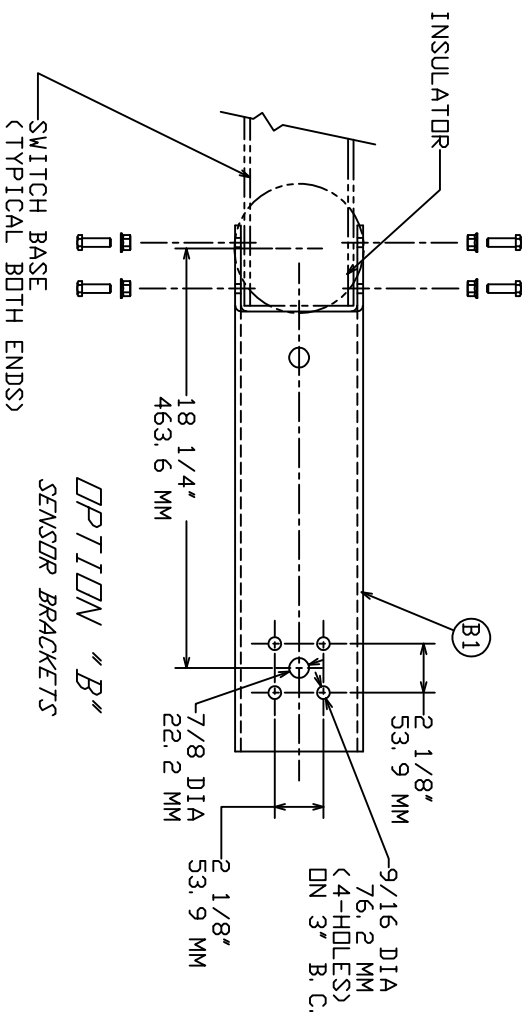
OPTION "H"
 CAPTIVE HARDWARE
 (TYPICAL 6 TERMINAL PADS)



OPTION "R"
 ADDITIONAL 7 FT./2134 MM OF CONTROL
 PIPE ASSEMBLY AND STEADY LEVER



OPTION "L"
 SURGE ARRESTER
 BRACKETS



CHANCE TOLERANCE CHART
 EC 200713110446

CONFIDENTIAL: THIS DRAWING AND ITS CONTENTS ARE CONFIDENTIAL AND THE EXCLUSIVE PROPERTY OF HUBBELL POWER SYSTEMS. NO COPIES MAY BE MADE WITHOUT THE WRITTEN CONSENT OF HUBBELL POWER SYSTEMS. HUBBELL POWER SYSTEMS UNPUBLISHED ALL RIGHTS RESERVED UNDER THE COPYRIGHT LAWS.

		HUBBELL POWER SYSTEMS	
DRAWING, SWITCH CONTROL			
TITLE HUBBELL POWER SYSTEMS DRAWING, SWITCH CONTROL	SIZE D	DWG NO. SARI2-T&G	CAT / PART / ASSY NO. SEE SHEET 1
DO NOT SCALE THIS DRAWING	DRN BY GBR	DATE 03/28/03	SHEET 02 OF 02