

CATALOG NUMBERING SYSTEM

POSITION

A R 3



- INTERRUPTER
1 - STD
- PHASE OVER PHASE
- POSITION 1
INSULATION
1 - 110KV PORCELAIN (17.1KV)
3 - 110KV POLYMER (17.1KV)
4 - 150KV POLYMER (29KV)
6 - 150KV POLYMER (38KV GRD-WYE)
7 - 150KV POLYMER LONG LEAK (38KV GRD-WYE)
- POSITION 2
CROSSARM & INTERPHASE SHAFT
S - STEEL
F - FIBERGLASS
- POSITION 3 CONTROLS
S - RECIPROCATING - ALL SECTIONS 3/4" NPS PIPE
F - RECIPROCATING - ALL SECTION 3/4" NPS PIPE EXCEPT TOP SECTION 1" DIA FIBERGLASS ROD
H - HOOKSTICK OPERATED CONTROL REPLACING "S" AND "F" (AS SHOWN ON SHEET 04)
A - TORSIONAL - ALL STEEL SECTIONS 1 1/4" PIPE
B - TORSIONAL - STEEL SECTIONS 1 1/4" PIPE EXCEPT TOP SECTION
- POSITIONS 4 THRU 11
SEE OPTION TABLE

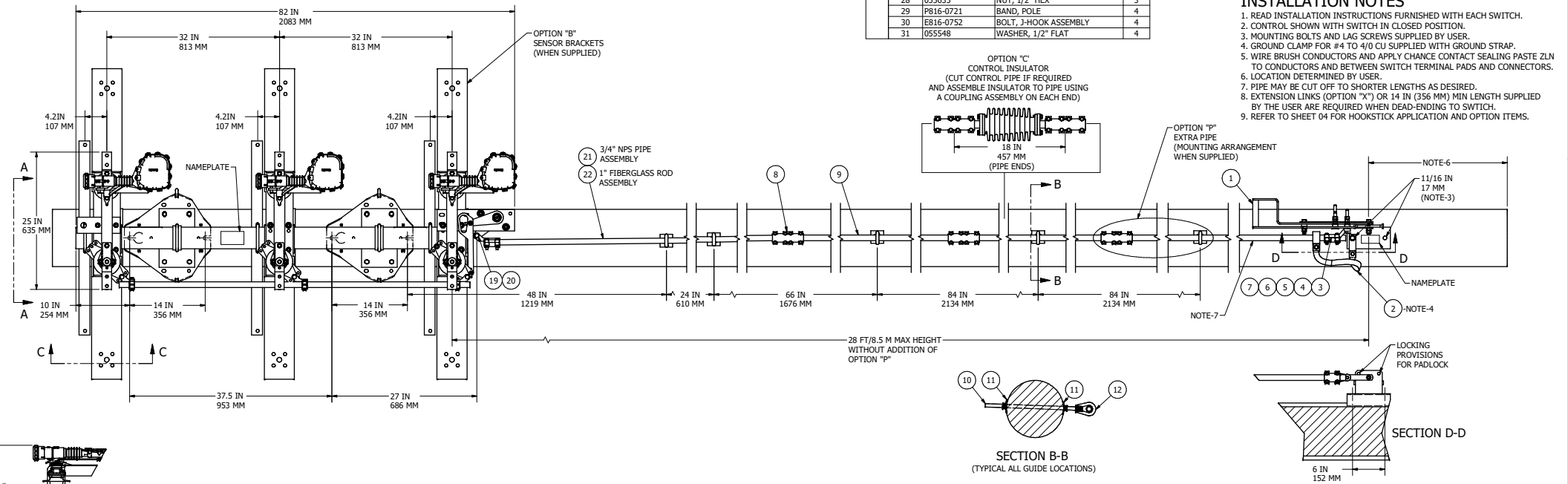
POSITION 3 CONTROLS				
ITEM	PART NUMBER	DESCRIPTION	QTY	
1	E801-1970	HANDLE, ASSEMBLY	1	
2	E801-2031	STRAP, GROUND ASSEMBLY	1	
3	P801-2006	CLEVIS, HANDLE	1	
4	P801-1975	CAP	1	
5	058536	BOLT, 3/8"-16X1-3/4"	4	
6	055493	WASHER, 3/8" LOCK	4	
7	056962	NUT, 3/8" HEX	4	
8	E801-2030	COUPLING, ASSEMBLY	3	
9	P801-1982	PIPE, 3/4" NPS X 85"	3	
10	8868	5/8" X 18" DOUBLE ARM BOLT	5	
11	6810-1/2	WASHER, CURVED	10	
12	6502	EYENUT	5	
13	P816-0721	BAND, POLE	4	
14	E816-0752	BOLT, J-HOOK ASSEMBLY	4	
15	055869	BOLT, 1/2-13 X 1-1/2" HEX	2	
16	055371	WASHER, 1/2" LOCK	2	
17	055635	NUT, 1/2" HEX	2	
18	055548	WASHER, 1/2" FLAT	2	
19	P801-0016	PIN, 1/2" DIA ROUND HEAD	1	
20	055902	PIN, COTTER	1	
S	E818-2094	CONTROL, SECTION STEEL	1	
F	E818-2091	CONTROL, SECTION FIBERGLASS	1	
H	P818-2030	LEVER, HOOKSTICK	1	
	056497	BOLT, 3/8" X 1"	1	
	P001-0749	NUT, 3/8" FLANGED	1	
	055869	BOLT, 1/2" X 1-1/2"	3	
	055371	WASHER, 1/2" LOCK	3	
	055635	NUT, 1/2" HEX	3	
	P816-0721	BAND, POLE	4	
	E816-0752	BOLT, J-HOOK ASSEMBLY	4	
	055548	WASHER, 1/2" FLAT	4	

POSITIONS 4 THRU 11 OPTIONS				
	ITEM	PART NUMBER	DESCRIPTION	QTY
B - SENSOR BRACKETS	B1	E818-1621	KIT, SENSOR MOUNTING	1
C - CONTROL INSULATOR	C1	E818-2054	INSULATOR, CONTROL	1
	C2	E801-2030	COUPLING, ASSEMBLY	1
	G1	SWL-025-B	TERMINAL, BRZ BOLTED CABLE	6
G - TERMINAL CONNECTORS	G2	P815-0025	BOLT, 1/2" CAPTIVE	12
	G3	055634	NUT, 1/2" HEX	12
	G4	058883	WASHER, 1/2" FLAT	12
H - CAPTIVE HARDWARE	H1	P815-0025	BOLT, 1/2" CAPTIVE	12
	H2	055634	NUT, 1/2" HEX	12
	H3	058883	WASHER, 1/2" FLAT	12
	L1	P801-3468	BRACKET, SA	3
	L2	P816-0658	BOLT, MOUNTING	3
L - SURGE ARRESTER BRACKETS	L3	055548	WASHER, 1/2" FLAT	6
	L4	055371	WASHER, 1/2" SPRING LOCK	12
	L5	055635	NUT, 1/2" HEX	12
	L6	055545	BOLT, 1/2" X 2" HEX	6
	P1	E801-2030	COUPLING, ASSEMBLY	1
	P2	P801-1982	PIPE, 3/4" NPS X 85"	1
P - EXTRA PIPE	P3	8868	5/8" X 18" DOUBLE ARM BOLT	1
	P4	6810-1/2	WASHER, CURVED	2
	P5	6502	EYENUT	1
T - TERMINAL CONNECTORS	T1	ATC1343	TERMINAL	6
X - EXTENSION LINKS	X1	C207-0112	LINKS, EXTENSION	6

OPTIONS "D" & "R" DO NOT APPLY WHEN HOOKSTICK OPERATED CONTROL SUPPLIED

INSTALLATION NOTES

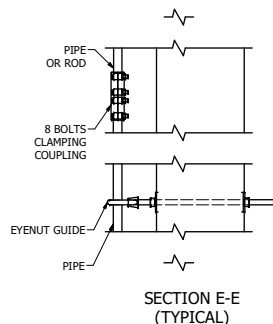
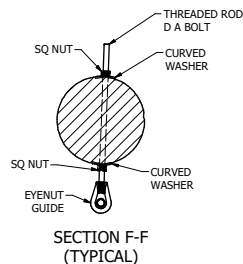
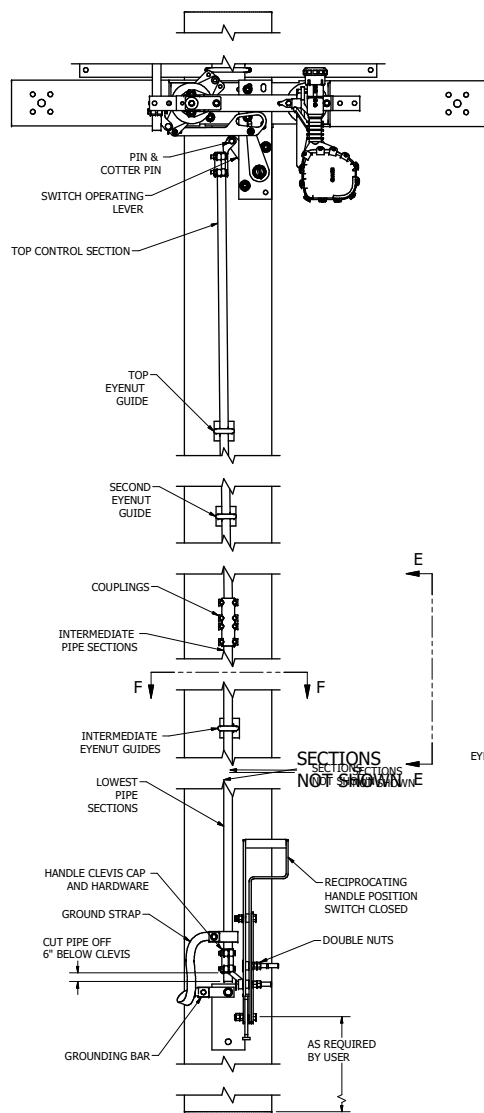
1. READ INSTALLATION INSTRUCTIONS FURNISHED WITH EACH SWITCH.
2. CONTROL SHOWN WITH SWITCH IN CLOSED POSITION.
3. MOUNTING BOLTS AND LAG SCREWS SUPPLIED BY USER.
4. GROUND CLAMP FOR #4 TO 4/0 CU SUPPLIED WITH GROUND STRAP.
5. WIRE BRUSH CONDUCTORS AND APPLY CHANCE CONTACT SEALING PASTE ZLN TO CONDUCTORS AND BETWEEN SWITCH TERMINAL PADS AND CONNECTORS.
6. LOCATION DETERMINED BY USER.
7. PIPE MAY BE CUT OFF TO SHORTER LENGTHS AS DESIRED.
8. EXTENSION LINKS (OPTION "X") OR 14 IN (356 MM) MIN LENGTH SUPPLIED BY THE USER ARE REQUIRED WHEN DEAD-ENDING TO SWITCH.
9. REFER TO SHEET 04 FOR HOOKSTICK APPLICATION AND OPTION ITEMS.



CONTROL "S" AND "F" SHOWN ON SHEET 01

NOTE: 28 FT/8.5 M OF PIPE SUPPLIED AS STANDARD WITH "S" OR "F" CONTROL. FOR ADDITIONAL PIPE SEE OPTION P.

200713110446	8/18/20	SR	JWB	CHANCE	HUBBELL POWER SYSTEMS TITLE: DRAWING SWITCH CONTROL SIZE: D SAAR13-S&F CAT / PART / Assy NO. REV D DATE: 01/30/02 SHEET 1 OF 4
EC #	DATE	CHG BY	RESP ENG	TOLERANCE CHART X - 4 DEC FRACTION ANGLES 25 X - 2 DEC FRACTION ANGLES 10 X - 1 DEC FRACTION ANGLES 5 X - 0.5 DEC FRACTION ANGLES 2.5 X - 0.25 DEC FRACTION ANGLES 1.25 X - 0.125 DEC FRACTION ANGLES 0.625 X - 0.0625 DEC FRACTION ANGLES 0.3125 X - 0.03125 DEC FRACTION ANGLES 0.15625 X - 0.015625 DEC FRACTION ANGLES 0.078125 X - 0.0078125 DEC FRACTION ANGLES 0.0390625 X - 0.00390625 DEC FRACTION ANGLES 0.01953125 X - 0.001953125 DEC FRACTION ANGLES 0.009765625 X - 0.0009765625 DEC FRACTION ANGLES 0.0048828125 X - 0.00048828125 DEC FRACTION ANGLES 0.00244140625 X - 0.000244140625 DEC FRACTION ANGLES 0.001220703125 X - 0.0001220703125 DEC FRACTION ANGLES 0.0006103515625 X - 0.00006103515625 DEC FRACTION ANGLES 0.00030517578125 X - 0.000030517578125 DEC FRACTION ANGLES 0.000152587890625 X - 0.0000152587890625 DEC FRACTION ANGLES 0.0000762939453125 X - 0.00000762939453125 DEC FRACTION ANGLES 0.00003814697265625 X - 0.000003814697265625 DEC FRACTION ANGLES 0.000019073486328125 X - 0.0000019073486328125 DEC FRACTION ANGLES 0.0000095367431640625 X - 0.00000095367431640625 DEC FRACTION ANGLES 0.00000476837158203125 X - 0.000000476837158203125 DEC FRACTION ANGLES 0.000002384185791015625 X - 0.0000002384185791015625 DEC FRACTION ANGLES 0.0000011920928955078125 X - 0.00000011920928955078125 DEC FRACTION ANGLES 0.00000059604644775390625 X - 0.000000059604644775390625 DEC FRACTION ANGLES 0.000000298023223876953125 X - 0.0000000298023223876953125 DEC FRACTION ANGLES 0.0000001490116119384765625 X - 0.00000001490116119384765625 DEC FRACTION ANGLES 0.00000007450580596923828125 X - 0.000000007450580596923828125 DEC FRACTION ANGLES 0.000000037252902984619140625 X - 0.0000000037252902984619140625 DEC FRACTION ANGLES 0.0000000186264514923095703125 X - 0.00000000186264514923095703125 DEC FRACTION ANGLES 0.00000000931322574615478515625 X - 0.000000000931322574615478515625 DEC FRACTION ANGLES 0.000000004656612873077392578125 X - 0.0000000004656612873077392578125 DEC FRACTION ANGLES 0.0000000023283064365386962890625 X - 0.00000000023283064365386962890625 DEC FRACTION ANGLES 0.00000000116415321826934814453125 X - 0.000000000116415321826934814453125 DEC FRACTION ANGLES 0.000000000582076609134674072265625 X - 0.0000000000582076609134674072265625 DEC FRACTION ANGLES 0.0000000002910383045673370361328125 X - 0.00000000002910383045673370361328125 DEC FRACTION ANGLES 0.00000000014551915228366851806640625 X - 0.000000000014551915228366851806640625 DEC FRACTION ANGLES 0.000000000072759576141834259033203125 X - 0.0000000000072759576141834259033203125 DEC FRACTION ANGLES 0.0000000000363797880709171295166015625 X - 0.00000000000363797880709171295166015625 DEC FRACTION ANGLES 0.000000000018189894035458564757803125 X - 0.0000000000018189894035458564757803125 DEC FRACTION ANGLES 0.0000000000090949470177292823789015625 X - 0.00000000000090949470177292823789015625 DEC FRACTION ANGLES 0.000000000004547473508864618959453125 X - 0.0000000000004547473508864618959453125 DEC FRACTION ANGLES 0.0000000000022737367544323094787890625 X - 0.00000000000022737367544323094787890625 DEC FRACTION ANGLES 0.00000000000113686837721615493939453125 X - 0.000000000000113686837721615493939453125 DEC FRACTION ANGLES 0.000000000000568434188608077469697265625 X - 0.0000000000000568434188608077469697265625 DEC FRACTION ANGLES 0.0000000000002842170943040387348486328125 X - 0.00000000000002842170943040387348486328125 DEC FRACTION ANGLES 0.00000000000014210854715201936942431640625 X - 0.000000000000014210854715201936942431640625 DEC FRACTION ANGLES 0.000000000000071054273576009684712158203125 X - 0.0000000000000071054273576009684712158203125 DEC FRACTION ANGLES 0.00000000000003552713678800484235609515625 X - 0.000000000000003552713678800484235609515625 DEC FRACTION ANGLES 0.00000000000001776356839400242117804787890625 X - 0.000000000000001776356839400242117804787890625 DEC FRACTION ANGLES 0.000000000000008881784197001210589023939453125 X - 0.0000000000000008881784197001210589023939453125 DEC FRACTION ANGLES 0.000000000000004440892098500605294519697265625 X - 0.0000000000000004440892098500605294519697265625 DEC FRACTION ANGLES 0.0000000000000022204460492503026472598486328125 X - 0.00000000000000022204460492503026472598486328125 DEC FRACTION ANGLES 0.00000000000000111022302462515132362942431640625 X - 0.000000000000000111022302462515132362942431640625 DEC FRACTION ANGLES 0.000000000000000555111512312566182112158203125 X - 0.0000000000000000555111512312566182112158203125 DEC FRACTION ANGLES 0.0000000000000002775557561563090910589023939453125 X - 0.00000000000000002775557561563090910589023939453125 DEC FRACTION ANGLES 0.00000000000000013877787807815454552942431640625 X - 0.000000000000000013877787807815454552942431640625 DEC FRACTION ANGLES 0.000000000000000069388939039077272764712158203125 X - 0.0000000000000000069388939039077272764712158203125 DEC FRACTION ANGLES 0.00000000000000003469446951953863638235609515625 X - 0.000000000000000003469446951953863638235609515625 DEC FRACTION ANGLES 0.000000000000000017347234759769318191272928237890625 X - 0.0000000000000000017347234759769318191272928237890625 DEC FRACTION ANGLES 0.0000000000000000086736173798896590558564757803125 X - 0.00000000000000000086736173798896590558564757803125 DEC FRACTION ANGLES 0.000000000000000004336808689944795277804787890625 X - 0.0000000000000000004336808689944795277804787890625 DEC FRACTION ANGLES 0.000000000000000002168404344972397638923939453125 X - 0.0000000000000000002168404344972397638923939453125 DEC FRACTION ANGLES 0.00000000000000000108420217248619881946219697265625 X - 0.000000000000000000108420217248619881946219697265625 DEC FRACTION ANGLES 0.0000000000000000005421010862430944097309515625 X - 0.00000000000000000005421010862430944097309515625 DEC FRACTION ANGLES 0.0000000000000000002710505431215472048697265625 X - 0.00000000000000000002710505431215472048697265625 DEC FRACTION ANGLES 0.00000000000000000013552527156077360243486328125 X - 0.000000000000000000013552527156077360243486328125 DEC FRACTION ANGLES 0.00000000000000000006776263578038680121712158203125 X - 0.000000000000000000006776263578038680121712158203125 DEC FRACTION ANGLES 0.0000000000000000000338813178901934006058564757803125 X - 0.00000000000000000000338813178901934006058564757803125 DEC FRACTION ANGLES 0.000000000000000000016940658945096700302923939453125 X - 0.0000000000000000000016940658945096700302923939453125 DEC FRACTION ANGLES 0.00000000000000000000847032947254835015146219697265625 X - 0.000000000000000000000847032947254835015146219697265625 DEC FRACTION ANGLES 0.0000000000000000000042351647362741750757309515625 X - 0.00000000000000000000042351647362741750757309515625 DEC FRACTION ANGLES 0.0000000000000000000021175823681363728788923939453125 X - 0.00000000000000000000021175823681363728788923939453125 DEC FRACTION ANGLES 0.00000000000000000000105879118406816439446219697265625 X - 0.000000000000000000000105879118406816439446219697265625 DEC FRACTION ANGLES 0.00000000000000000000052939559203407222312158203125 X - 0.000000000000000000000052939559203407222312158203125 DEC FRACTION ANGLES 0.000000000000000000000264697796017036110589023939453125 X - 0.0000000000000000000000264697796017036110589023939453125 DEC FRACTION ANGLES 0.0000000000000000000001323488980085180552942431640625 X - 0.00000000000000000000001323488980085180552942431640625 DEC FRACTION ANGLES 0.00000000000000000000006617444900425902762942431640625 X - 0.000000000000000000000006617444900425902762942431640625 DEC FRACTION ANGLES 0.000000000000000000000033087224502129513814712158203125 X - 0.0000000000000000000000033087224502129513814712158203125 DEC FRACTION ANGLES 0.000000000000000000000016543612251064790735609515625 X - 0.0000000000000000000000016543612251064790735609515625 DEC FRACTION ANGLES 0.0000000000000000000000082718061255032395302923939453125 X - 0.00000000000000000000000082718061255032395302923939453125 DEC FRACTION ANGLES 0.000000000000000000000004135903062751619765146219697265625 X - 0.0000000000000000000000004135903062751619765146219697265625 DEC FRACTION ANGLES 0.000000000000000000000002067951531375809877804787890625 X - 0.0000000000000000000000002067951531375809877804787890625 DEC FRACTION ANGLES 0.00000000000000000000000103397576568790488923939453125 X - 0.000000000000000000000000103397576568790488923939453125 DEC FRACTION ANGLES 0.0000000000000000000000005169878828439524446219697265625 X - 0.00000000000000000000000005169878828439524446219697265625 DEC FRACTION ANGLES 0.000000000000000000000000258493941421976222312158203125 X - 0.0000000000000000000000000258493941421976222312158203125 DEC FRACTION ANGLES 0.000000000000000000000000129246970710988110589023939453125 X - 0.0000000000000000000000000129246970710988110589023939453125 DEC FRACTION ANGLES 0.000000000000000000000000064623485354944058564757803125 X - 0.0000000000000000000000000064623485354944058564757803125 DEC FRACTION ANGLES 0.000000000000000000000000032311742677472202923939453125 X - 0.0000000000000000000000000032311742677472202923939453125 DEC FRACTION ANGLES 0.000000000000000000000000016155871338736110589023939453125 X - 0.0000000000000000000000000016155871338736110589023939453125 DEC FRACTION ANGLES 0.0000000000000000000000000080779356693680552942431640625	



RECEIVING & HANDLING

COMPARE VERTICAL CONTROL COMPONENTS WITH MATERIAL LIST (SHEET 01) TO BE SURE ALL ITEMS ARE INCLUDED. CONTACT YOUR FACTORY REPRESENTATIVE IF PARTS ARE MISSING.

CONTROL INSTALLATION

(REFER TO SHEET 01 FOR VERTICAL CONTROL INSTALLATION)

- STEP 1: ASSEMBLE TOP CONTROL SECTION TO SWITCH OPERATING LEVER WITH PIN AND COTTER PIN.
- STEP 2: LOCATE AND DRILL 11/16" DIA HOLES ON THE POLE CENTERLINE FOR TOP AND SECOND EYENUT GUIDES.
- STEP 3: SLIDE THE TOP EYENUT GUIDE UP FROM THE BOTTOM OF THE TOP CONTROL SECTION TO THE TOP DRILLED HOLE LOCATION. ASSEMBLE D A BOLT AND HARDWARE AS SHOWN IN "E-E" & "F-F". LEAVE HARDWARE LOOSE FOR LATER ADJUSTMENTS. REPEAT FOR SECOND EYENUT GUIDE.
- STEP 4: LOCATE AND DRILL 11/16" DIA HOLES ON THE POLE CENTERLINE FOR INTERMEDIATE EYENUT GUIDES DOWN THE POLE TO THE HANDLE BRACKET. ASSEMBLE AND LEAVE HARDWARE LOOSE FOR LATER ADJUSTMENTS.
- STEP 5: INSTALL AND CONNECT ALL REMAINING PIPE SECTIONS AND COUPLINGS AS SHOWN IN "E-E". BUTT ENDS OF PIPE TOGETHER CENTERED WITHIN EACH COUPLING. SECURELY TIGHTEN ALL CLAMPING HARDWARE.
- STEP 6: REFER BACK TO MANUAL P818-2040 AND CONTINUE WITH STEP 6 IN SECTION 6b (PAGE 24). PART NAMES AND ILLUSTRATIONS WILL LOOK DIFFERENT BUT ASSEMBLY AND ADJUSTMENT PROCEDURES WILL APPLY TO BOTH SIZES OF CONTROL SECTIONS.
- STEP 7: BEFORE HANDLE ADJUSTMENTS AND WITH THE SWITCH IN FULL CLOSED POSITION, ALIGN ALL EYENUT GUIDES ON CONTROL SECTIONS AND SECURELY TIGHTEN ALL MOUNTING HARDWARE. CONTINUE HANDLE ADJUSTMENTS AS SHOWN IN FIGURES 6-7 OF MANUAL.

-NOTE-

THIS COMPLETES INSTRUCTIONS ON THIS SUPPLEMENT SHEET. CONTINUE INSTRUCTIONS AS DESCRIBED IN MANUAL P818-2040.

IMPORTANT NOTICE FOR S&F CONTROLS

THIS INSTALLATION INSTRUCTION SUPPLEMENT SHEET SUPERSEDES THE FOLLOWING INSTRUCTION SECTIONS AND PAGES AS DESCRIBED IN MANUAL P818-2040 REV A. (MANUAL P818-2040 SUPPLIED WITH ALL "AR" SWITCHES)

- SECTION 4g(PAGE 13) RECEIVING & HANDLING
- SECTION 6b(PAGES 22 & 23) CONTROL INSTALLATION

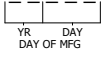
RECIPROCATING CONTROLS

200713110446	8/18/20	SR	JWB	CHANCE	TITLE BLOCK SHEET	HUBBELL POWER SYSTEMS
EC #	DATE	CHG BY	RESP ENG	CONFIDENTIAL THIS DRAWING AND ITS CONTENTS ARE CONFIDENTIAL AND THE EXCLUSIVE PROPERTY OF HUBBELL POWER SYSTEMS. NO REPLICATION, DISTRIBUTION OR COPIES MAY BE MADE WITHOUT THE WRITTEN CONSENT OF HUBBELL POWER SYSTEMS. HUBBELL POWER SYSTEMS UNPUBLISHED ALL RIGHTS RESERVED UNDER THE COPYRIGHT LAWS.	DATE: 01/30/02	SHEET 2 OF 4
DESC OF DWG: REMOVED HEAVY DUTY INTERRUPTER OPTION				AREAS AFFECTED BY CHANGE: S.P.C. - Y N P.A.L. - X SOLIDQUIP - X SUNLITE - X GALVAN - X MICROTRAC - X POLYLAB - X MIGHTY - X	DRAWING SWITCH CONTROL	
REASON(S) FOR CHANGE: UPDATE USE STOCK				DRAWING SWITCH CONTROL		

CATALOG NUMBERING SYSTEM

POSITION

A R 3



INTERRUPTER
1 - STD

PHASE OVER PHASE

- POSITION 1**
INSULATION
1 - 110KV PORCELAIN (17.1KV)
3 - 110KV POLYMER (17.1KV)
4 - 150KV POLYMER (29KV)
6 - 150KV POLYMER (38KV GRD-WYE)
7 - 150KV POLYMER LONG LEAK (38KV GRD-WYE)

- POSITION 3 CONTROLS**
S - RECIPROCATING - ALL SECTIONS 3/4" NPS PIPE
F - RECIPROCATING - ALL SECTION 3/4" NPS PIPE EXCEPT TOP SECTION 1" DIA FIBERGLASS ROD
H - HOOKSTICK OPERATED CONTROL REPLACING "S" AND "F" (AS SHOWN ON SHEET 04)
A - TORSIONAL - ALL STEEL SECTIONS 1 1/4" PIPE
B - TORSIONAL - STEEL SECTIONS 1 1/4" PIPE EXCEPT TOP SECTION FIBERGLASS TUBE

- POSITION 2**
CROSSARM & INTERPHASE SHAFT
S - STEEL
F - FIBERGLASS

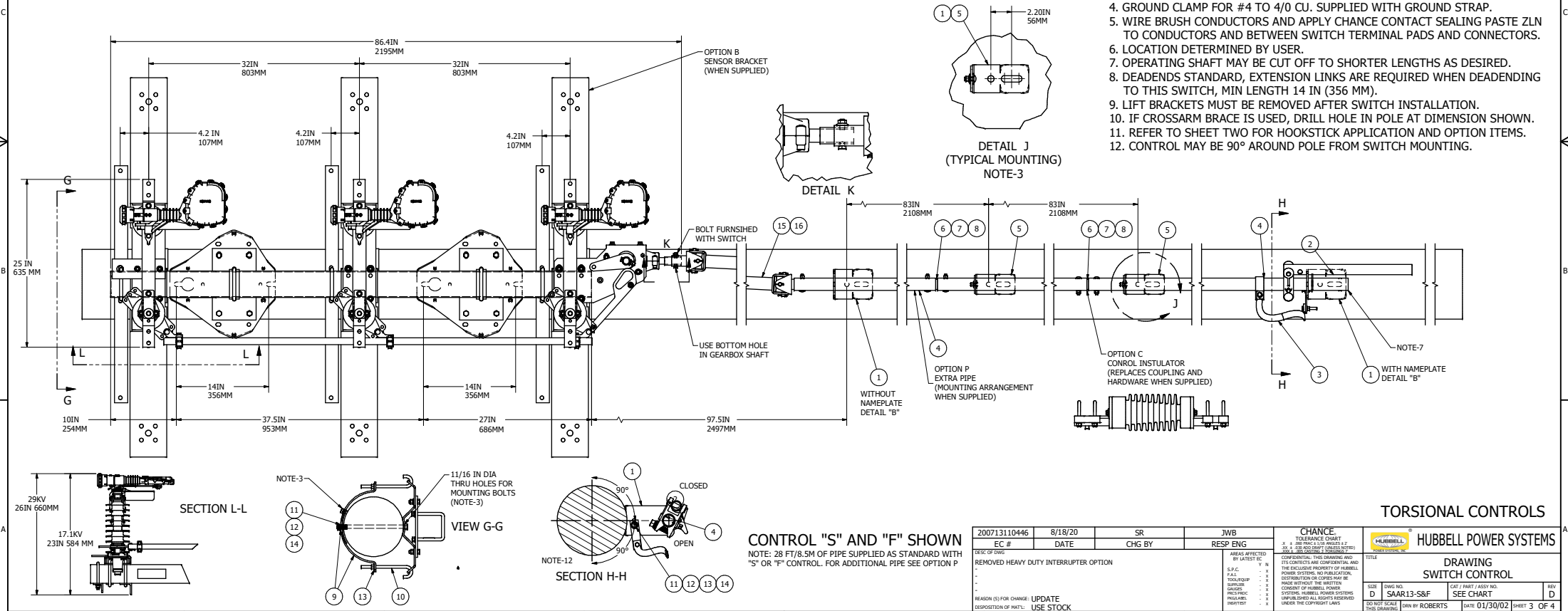
POSITIONS 4 THRU 11
SEE OPTION TABLE

POSITION 3 CONTROL			
ITEM	QTY	PART NUMBER	DESCRIPTION
1	2	P818-2002	GUIDE
2	1	E818-2007	HANDLE, CONTROL ASSY
3	1	091697	STRAP, GROUND ASSEMBLY
4	1	P816-0122	PIPE
5	2	E818-2008	GUIDE ASSEMBLY
6	2	P816-0006	COUPLING
7	5	P001-1907	BOLT, RIBBED NECK, RD HD
8	5	P001-1570	LOCKNUT, 3/8" HEX
9	4	P816-0721	BAND, POLE
10	4	E816-0752	BOLT, J-HOOK ASSEMBLY
11	4	055635	NUT, 1/2" HEX
12	4	055869	BOLT, 1/2-13 X 1-1/2" HEX
13	6	055548	WASHER, 1/2" FLAT
14	4	055371	WASHER, 1/2" LOCK
A	15	E818-2042	CONTROL, STEEL, UNIVERSAL
B	16	E818-2043	CONTROL, FIB UNIVERSAL

POSITIONS 4 THRU 11 OPTIONS			
	ITEM	QTY	PART NUMBER DESCRIPTION
B - SENSOR BRACKETS	B1	1	E818-1621 KIT, SENSOR MOUNTING
C - CONTROL INSULATOR	C1	1	E801-3397 INSULATOR, CONTROL
H - CAPTIVE HARDWARE	H1	12	P815-0025 BOLT, 1/2" CAPTIVE
	H2	12	055634 NUT, 1/2" HEX
	H3	12	058883 WASHER, 1/2" FLAT
	H4	3	P801-3468 BRACKET, SA
	L2	3	P816-0658 BOLT, MOUNTING U
L - SURGE ARRESTER BRACKETS	L3	6	055548 WASHER, 1/2" FLAT
	L4	12	055371 WASHER, 1/2" SPRING LOCK
	L5	12	055635 NUT, 1/2" HEX
	L6	6	055545 BOLT, 1/2" X 2" HEX
	P1	1	P816-0122 PIPE
P - EXTRA PIPE	P2	1	E818-2008 GUIDE, ASSEMBLY
	P3	1	P816-0006 COUPLING
	P4	2	P001-1907 BOLT, RIBBED NECK, RD HD
	P5	2	P001-1570 NUT, 3/8" LOCK
T - TERMINAL CONNECTORS	T1	6	ATC1343 TERMINAL
X - EXTENSION LINKS	X1	6	C207-0112 LINKS, EXTENSION
	G1	6	SWL-025-B TERMINAL, BR2 BOLTED CABLE
	G2	12	P815-0025 BOLT, 1/2" CAPTIVE
G - TERMINAL CONNECTORS	G3	12	055634 NUT, 1/2" HEX
	G4	12	058883 WASHER, 1/2" FLAT

NOTES:

1. READ INSTALLATION INSTRUCTIONS FURNISHED WITH EACH SWITCH.
2. CONTROL SHOWN WITH SWITCH IN CLOSED POSITION.
3. MOUNTING BOLTS AND LAG SCREWS SUPPLIED BY USER.
4. GROUND CLAMP FOR #4 TO 4/0 CU. SUPPLIED WITH GROUND STRAP.
5. WIRE BRUSH CONDUCTORS AND APPLY CHANCE CONTACT SEALING PASTE ZLN TO CONDUCTORS AND BETWEEN SWITCH TERMINAL PADS AND CONNECTORS.
6. LOCATION DETERMINED BY USER.
7. OPERATING SHAFT MAY BE CUT OFF TO SHORTER LENGTHS AS DESIRED.
8. DEADENDS STANDARD, EXTENSION LINKS ARE REQUIRED WHEN DEADENDING TO THIS SWITCH, MIN LENGTH 14 IN (356 MM).
9. LIFT BRACKETS MUST BE REMOVED AFTER SWITCH INSTALLATION.
10. IF CROSSARM BRACE IS USED, DRILL HOLE IN POLE AT DIMENSION SHOWN.
11. REFER TO SHEET TWO FOR HOOKSTICK APPLICATION AND OPTION ITEMS.
12. CONTROL MAY BE 90° AROUND POLE FROM SWITCH MOUNTING.



CONTROL "S" AND "F" SHOWN

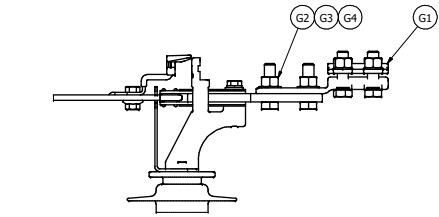
NOTE: 28 FT/8.5M OF PIPE SUPPLIED AS STANDARD WITH "S" OR "F" CONTROL. FOR ADDITIONAL PIPE SEE OPTION P

200713110446	8/18/20	SR	JWB	CHANCE	
EC #	DATE	CHG BY	RESP ENG	TITLE	
REASON (S) FOR CHANGE: UPDATE USE STOCK				DRAWING SWITCH CONTROL	
DESCRIPTION OF MAT'L.				DRAWING NO. SAAR13-S&F	
REASON (S) FOR CHANGE: UPDATE USE STOCK				DATE 01/30/02	
REASON (S) FOR CHANGE: UPDATE USE STOCK				SHEET 3 OF 4	

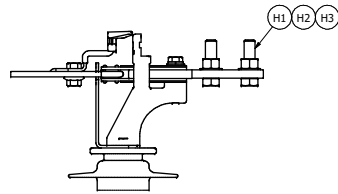
TORSIONAL CONTROLS

HUBBELL POWER SYSTEMS

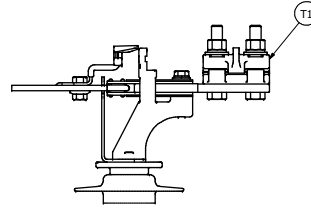
HUBBELL POWER SYSTEMS
 DRAWING SWITCH CONTROL
 DATE 01/30/02
 SHEET 3 OF 4



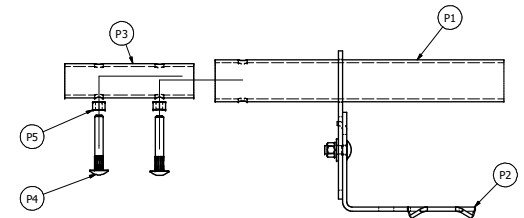
OPTION "G"
 TERMINAL CONNECTOR
 (BRONZE STRAIGHT BOLT TERMINAL
 CABLE TO FLAT TYPE SWL)



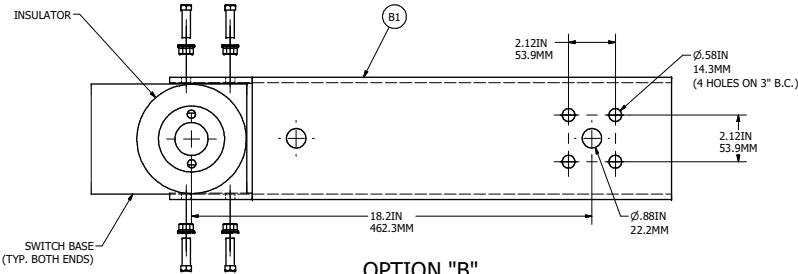
OPTION "H"
 CAPTIVE HARDWARE
 (TYP. 6 TERMINAL PADS)



OPTION "T"
 TERMINAL CONNECTOR
 (PARALLEL GROOVE TERMINAL
 ASSEMBLY FOR #2-500 KCMIL)
 (TYP. 6 TERMINAL PADS)



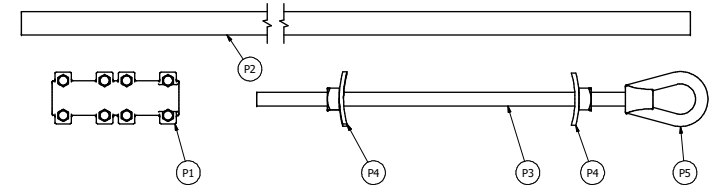
OPTION "P" FOR TORSIONAL CONTROLS
 ADDITIONAL 7FT/2134MM OF CONTROL
 PIPE, COUPLING, GUIDE ASSEMBLY AND HARDWARE
 (NOT AVAILABLE WITH HOOKSTICK OPERATED CONTROL)



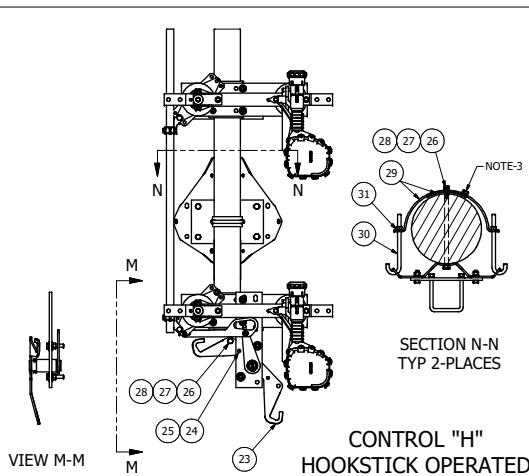
OPTION "B"
 SENSOR BRACKETS



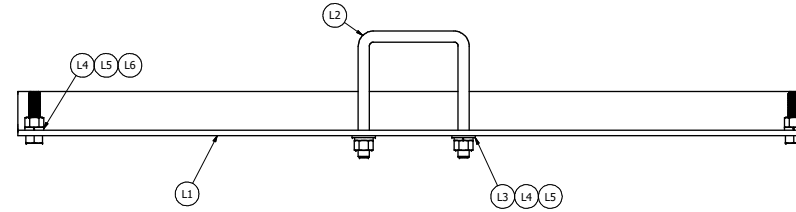
OPTION "X"
 EXTENSION LINKS
 14IN/356MM
 (TYP. 6 PLACES)



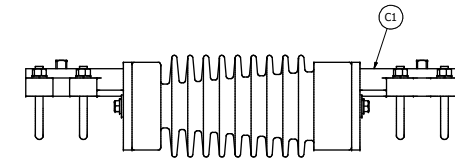
OPTION "P" FOR RECIPROCATING CONTROL
 ADDITIONAL 7 FT/2134 MM OF VERTICAL CONTROL PARTS
 (NOT AVAILABLE WITH HOOKSTICK OPERATED CONTROL)



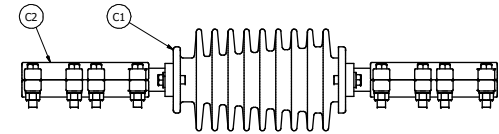
CONTROL "H"
 HOOKSTICK OPERATED



OPTION "L"
 SURGE ARRESTER BRACKETS



OPTION "C" FOR TORSIONAL CONTROL
 CONTROL INSULATOR



OPTION "C" FOR RECIPROCATING CONTROL
 CONTROL INSULATOR
 (NOT AVAILABLE WITH HOOKSTICK OPERATED CONTROL)

200713110446	8/18/20	SR	JWB	CHANCE	HUBBELL POWER SYSTEMS
EC #	DATE	CHG BY	RESP ENG	TITLE	DRAWING
				SAAR13-S&F	SWITCH CONTROL
REASON(S) FOR CHANGE: UPDATE				DATE: 01/30/02	
DESCRIPTION OF MAT'L: USE STOCK				SHEET: 4 OF 4	