

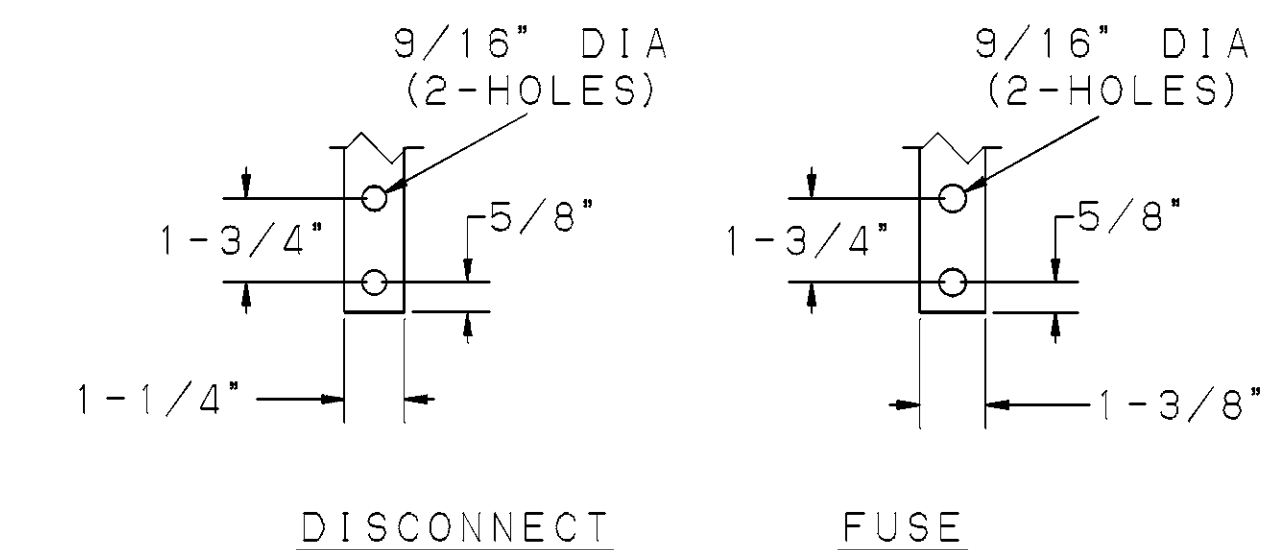
STOP PIN FACTORY ASSEMBLED FOR 160° BLADE OPENING. MAY BE FIELD CHANGED TO PROVIDE 90° OPENING

**BY-PASS FUSED SWITCH  
CATALOG NUMBERING SYSTEM**

BPF□□□□□

FUSE LOCATION		OPTIONS	
L-	FUSE ON LEFT SIDE (OPPOSITE AS SHOWN)	C-	CAPTIVE HARDWARE (NOT WITH OPTION P)
R-	FUSE ON RIGHT SIDE (AS SHOWN)	P-	TERMINAL CONNECTORS (NOT WITH OPTION C)
KV (BIL)		FUSE	
1 -	15 KV (110 BIL)	1 -	100A TYPE C (WITH FUSE HOLDER)
2 -	27 KV (150 BIL)	2 -	200A TYPE C (WITH FUSE HOLDER)

NET WEIGHT (LBS)			CRATE DIMENSIONS (INCHES)		
KV	SWITCH	CRATE	LENGTH	WIDTH	HEIGHT
15	125	75	49-1/2	25-1/2	33-1/2
27	140	75			



**TERMINAL PAD DETAILS**

-FUSE ON RIGHT SIDE SHOWN  
-FUSE ON LEFT SIDE OPPOSITE

LATEST EC NO:	REV.	DATE	CHANGED BY	RESP ENGINEER
06056	B	11-22-02	ROBERTS	WEAVER
-REVISED PICTURE				
DRN BY:	DATE	TITLE:	SIZE	
ROBERTS	01-08-02	BY-PASS FUSED SWITCH	D	
POWER SYSTEMS		SA-BPF		DWG NO:

CONFIDENTIAL: THIS DRAWING AND ITS CONTENTS ARE CONFIDENTIAL AND THE EXCLUSIVE PROPERTY OF HUBBELL / A. B. CHANCE COMPANY. NO PUBLICATION, DISTRIBUTION OR REPRODUCTION IS PERMITTED WITHOUT THE WRITTEN CONSENT OF HUBBELL / A. B. CHANCE COMPANY. © 2002 HUBBELL / A. B. CHANCE. UNPUBLISHED - ALL RIGHTS RESERVED UNDER THE COPYRIGHT LAWS