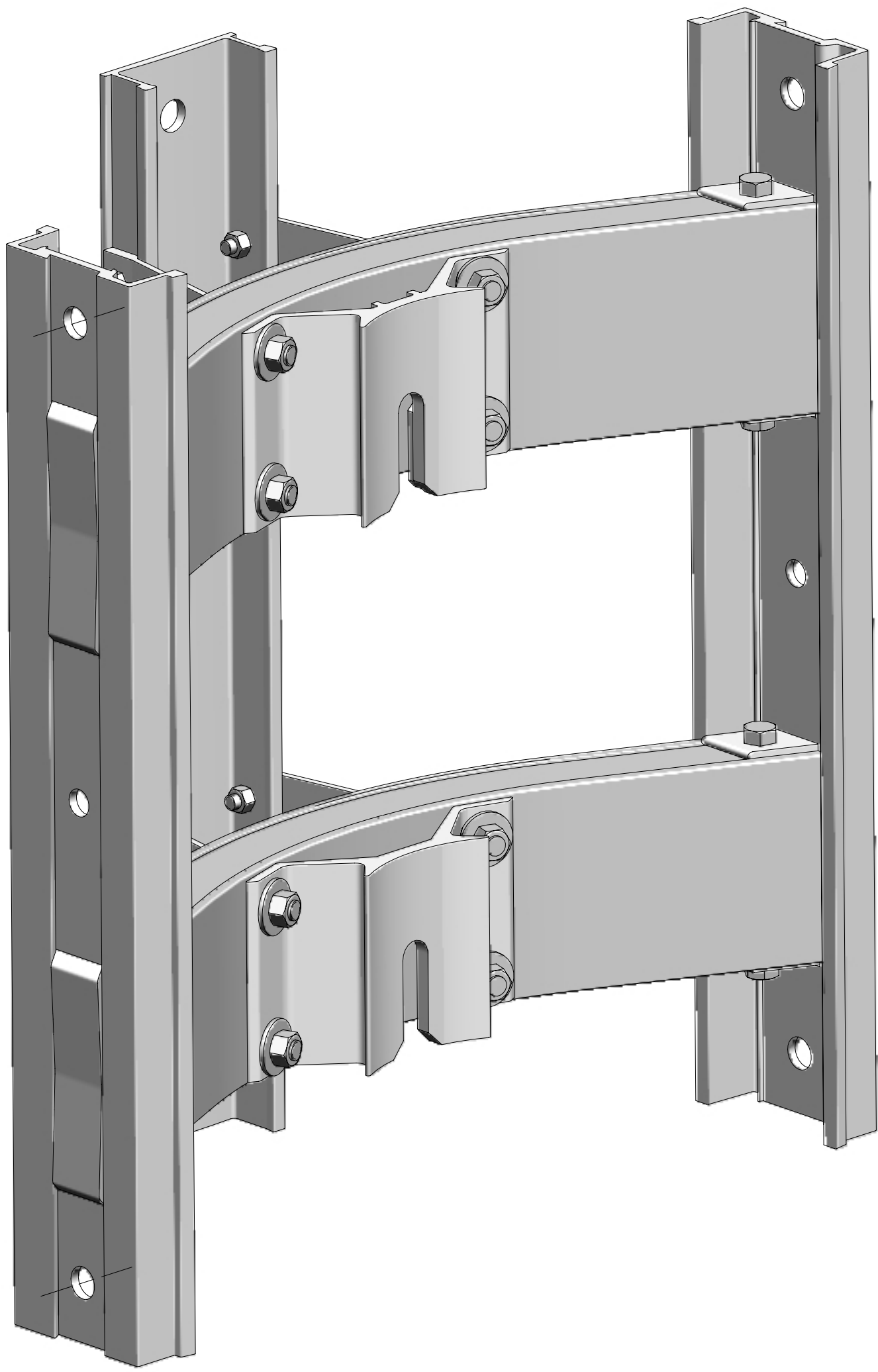
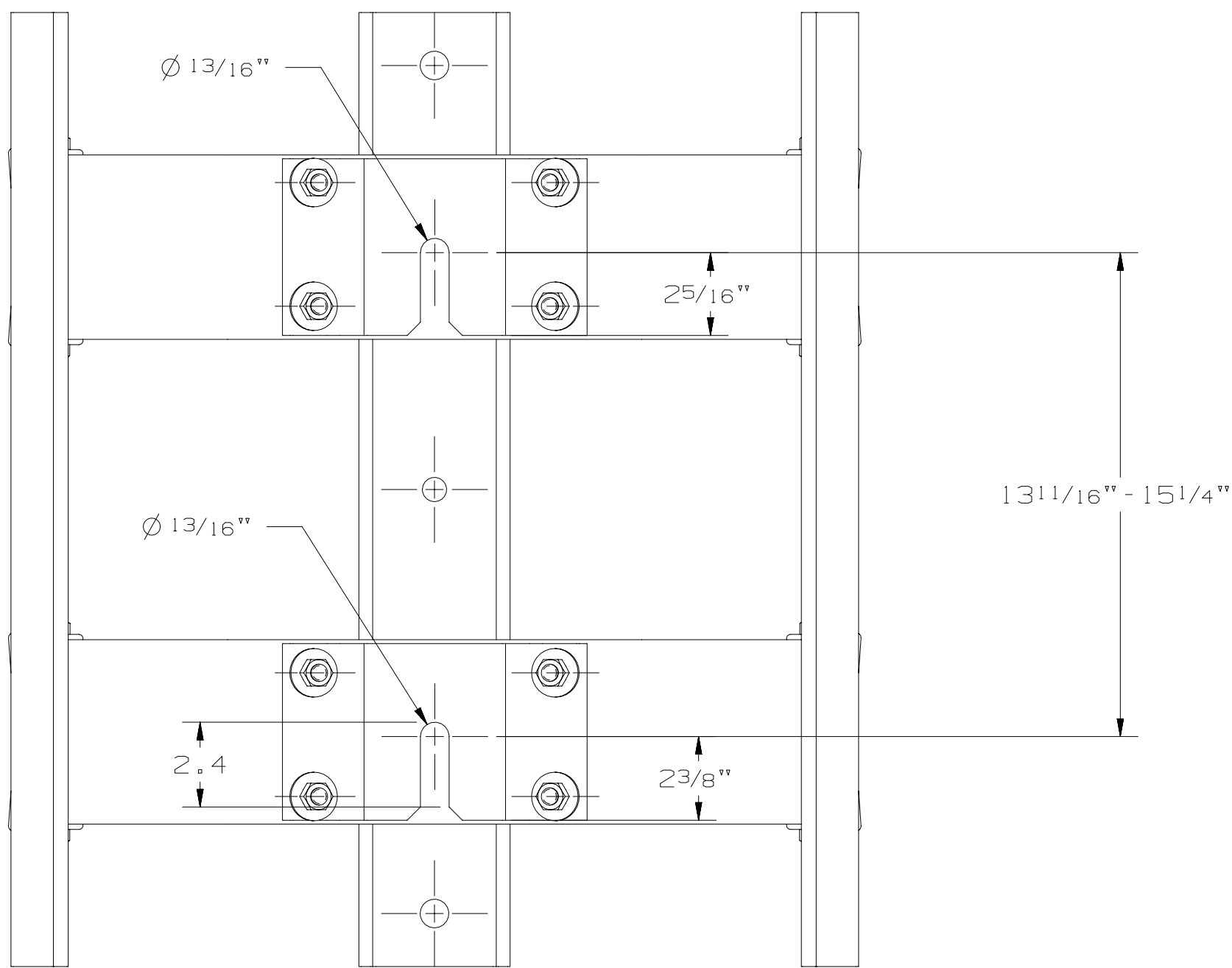
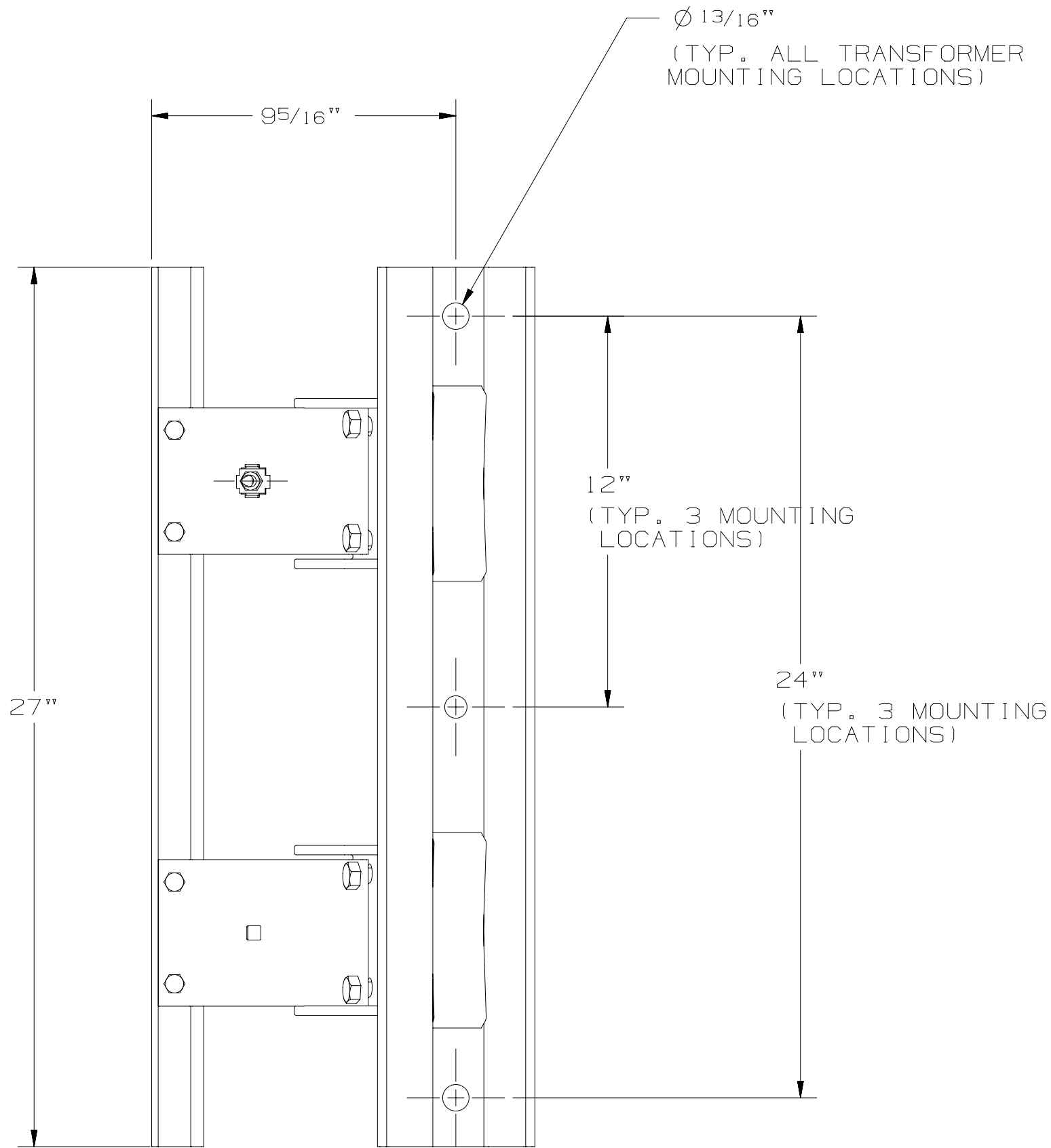
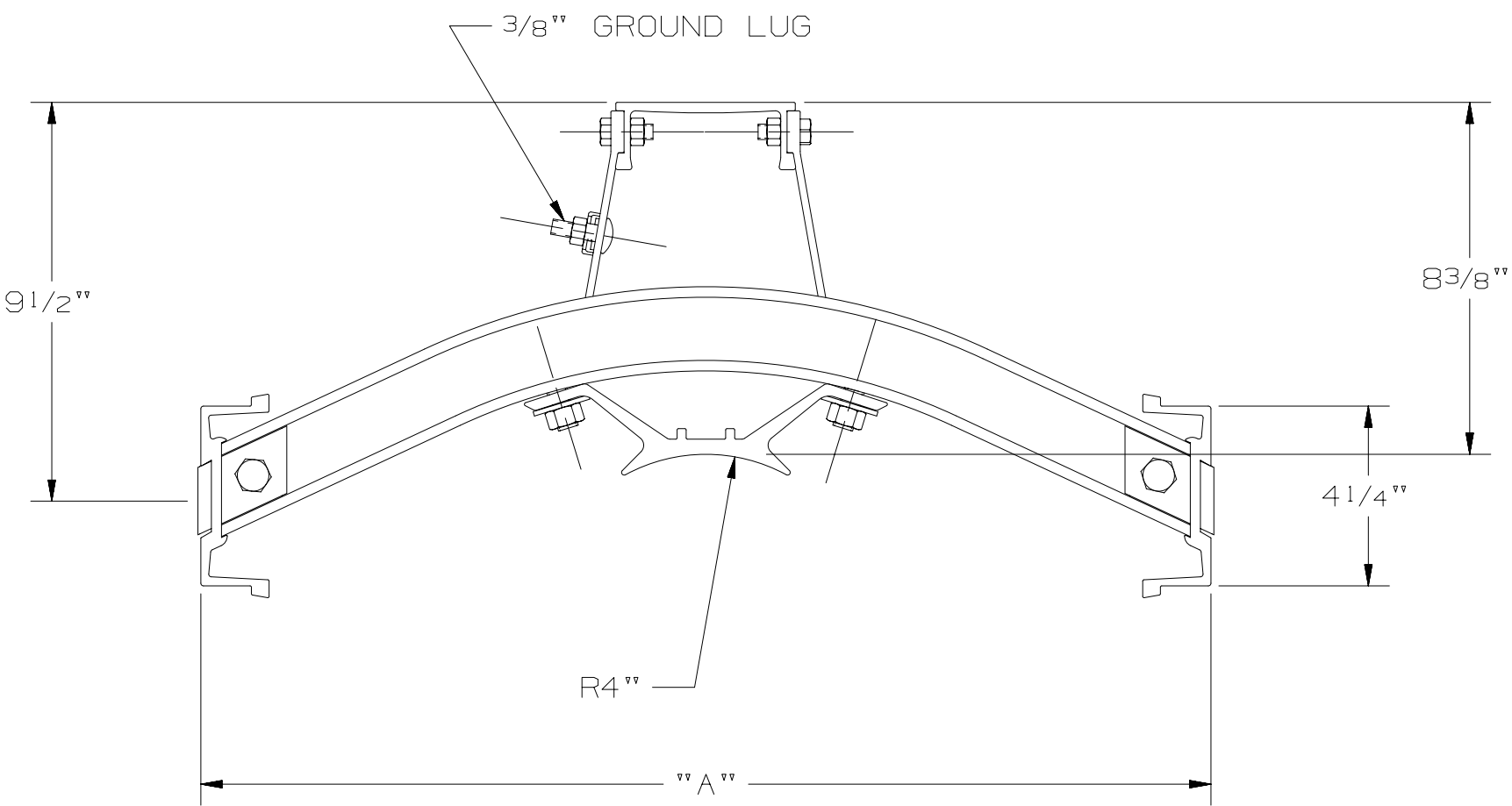


NOTES:

- 1.) ASSEMBLED COMPLETE AS SHOWN.
- 2.) MATERIAL: ALUMINUM (RACK BODY), GALVANIZED STEEL (HARDWARE).
- 3.) ASSEMBLIES SUPPLIED WITH 5/8" X 2 1/2" HIGH STRENGTH (GRADE 5) BOLTS WITH 3/4" BOLT SIZED SQUARE HEAD (QTY. 6) FOR USE WITH ALL TRANSFORMER LUGS (HEX NUTS AND LOCKWASHERS INCLUDED).
- 4.) ASSEMBLIES SUPPLIED WITH 3/4" X 2 1/4" SQUARE HEAD MACHINE BOLTS (HEX NUTS AND LOCKWASHERS INCLUDED).
- 5.) ASSEMBLIES SUPPLIED WITH 5/8" X 2 1/2" HIGH STRENGTH (ASTM A325) BOLTS WITH 3/4" BOLT SIZED SQUARE HEAD (QTY. 6) FOR USE WITH ALL TRANSFORMER LUGS (HEX NUTS AND LOCKWASHERS INCLUDED).
- 6.) ASSEMBLIES SUPPLIED WITH 5/8" X 2" SQUARE HEAD MACHINE BOLTS (HEX NUTS AND LOCKWASHERS INCLUDED).



CATALOG NUMBER	"A"	TRANSFORMER MOUNTING HARDWARE
C12MW24	24"	NOTE - 3
C12MW30	30"	NOTE - 3
C12MW24B	24"	NOTE - 4
C12MW30C	30"	NOTE - 5
C12MW24AB	24"	NOTE - 4 & NOTE - 6

LATEST EC NO:		REV.	DATE	CHANGED BY	RESP ENGINEER
-----		D	10/13/14	WILSON	WILSON
				DO NOT SCALE THIS DWG	THIRD ANGLE PROJECTION 150 DUAL DIMENSIONS IN=INCH, MM=MILLIMETER
DRN BY:	DATE	TITLE:			SIZE
JUL	02-27-12	WING CLUSTER MOUNT			D
HUBBELL POWER SYSTEMS		CHANCE		DWG NO: SAC12MW-24	

CONFIDENTIAL: THIS DRAWING AND ITS CONTENTS ARE CONFIDENTIAL AND THE EXCLUSIVE PROPERTY OF HUBBELL / A.B. CHANCE COMPANY. NO PUBLICATION, DISTRIBUTION OR COPIES MAY BE MADE WITHOUT WRITTEN CONSENT BY HUBBELL / A.B. CHANCE COMPANY. © 2001 HUBBELL/A.B. CHANCE. UNPUBLISHED - ALL RIGHTS RESERVED UNDER THE COPYRIGHT LAWS