

- NOTES -

1. ALL BRACKET MATERIAL IS ALUMINUM. BOLTS, NUTS AND WASHERS ARE GALVANIZED STEEL
2. ONE STAINLESS STEEL GROUNDING LUG IS ASSEMBLED TO EACH CLUSTER MOUNT. THIS CAN BE RELOCATED AS DESIRED FOR EASY ATTACHMENT OF THE GROUND WIRE
3. EACH CLUSTER MOUNT INCLUDES DETAILED INSTALLATION INSTRUCTIONS AND A POLE MEASURING TAPE WHICH AIDS IN CONVENIENT "ON THE GROUND" ADJUSTMENT (IF NECESSARY) BEFORE HANGING ON THE POLE
4. EXTENSION PLATES CAN BE USED WITH ANY OF THE LISTED CLUSTER MOUNT ASSEMBLIES TO INCREASE THE POLE DIAMETER RANGE BY APPROXIMATELY FIVE INCHES.

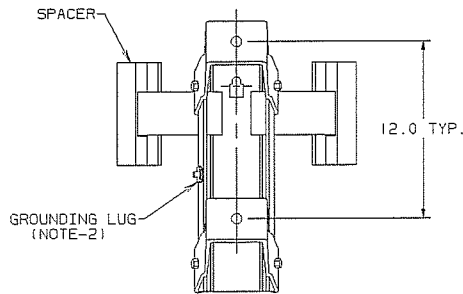
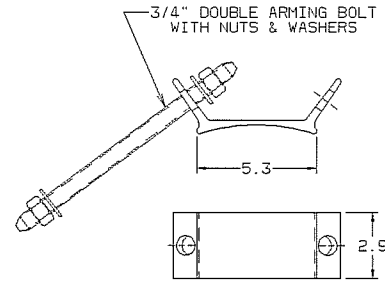
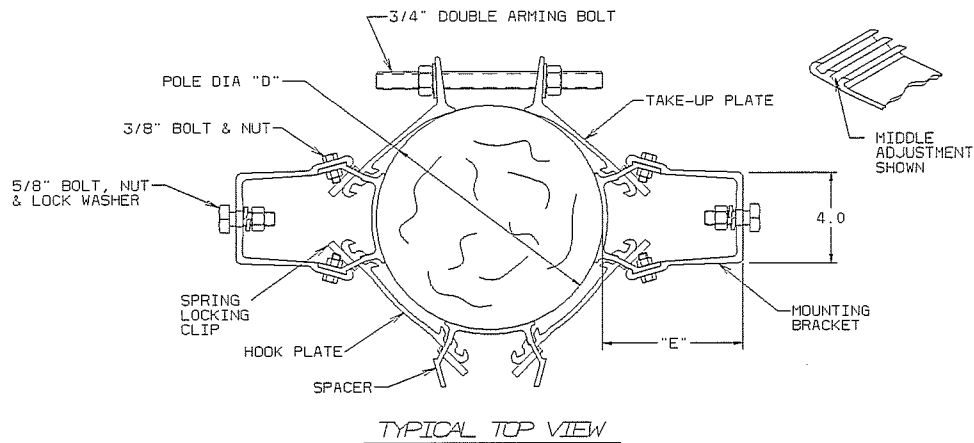


FIG. 1

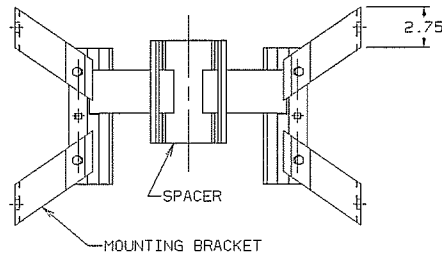


FIG. 2

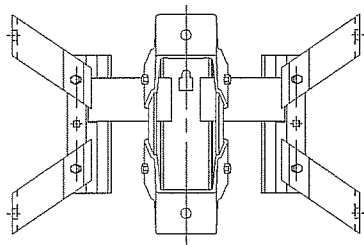


FIG. 3

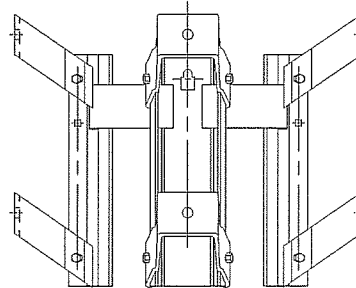


FIG. 4

CLUSTER MOUNT ASSEMBLIES				
CATALOG NO.	REFERENCE FIGURE	NUMBER OF TRANSFORMERS SUPPORTED	"D" NOMINAL POLE DIAMETER RANGE	"E" NOMINAL MOUNTING DISTANCE FROM POLE
CBM1-6M	FIG. 1	1	7-3/4 TO 12-1/4	6"
CBM1-9M	FIG. 1	1	7-3/4 TO 12-1/4	9"
CAH2-6	FIG. 2	2	7-3/4 TO 12-1/4	6"
CAH2-9	FIG. 2	2	7-3/4 TO 12-1/4	9"
CBM3-6	FIG. 3	3	7-3/4 TO 12-1/4	6"
CBM3-9	FIG. 3	3	7-3/4 TO 12-1/4	9"
CBM3-9E9	FIG. 3	3	7-3/4 TO 12-1/4	6"-9"-6"
CBM3-6M	FIG. 4	3	7-3/4 TO 12-1/4	6"
CBM1-6M-5	FIG. 1	1	6-1/2 TO 11-1/2	6"
CBM1-9M-5	FIG. 1	1	6-1/2 TO 11-1/2	9"
CAH2-6-5	FIG. 2	2	6-1/2 TO 11-1/2	6"
CAH2-9-5	FIG. 2	2	6-1/2 TO 11-1/2	9"
CBM3-6-5	FIG. 3	3	6-1/2 TO 11-1/2	6"
CBM3-9-5	FIG. 3	3	6-1/2 TO 11-1/2	9"
CBM3-9E9-5	FIG. 3	3	6-1/2 TO 11-1/2	6"-9"-6"
CBM3-6M-5	FIG. 4	3	6-1/2 TO 11-1/2	6"
CBM1-6M-14	FIG. 1	1	9-1/2 TO 14	6"
CBM1-9M-14	FIG. 1	1	9-1/2 TO 14	9"
CAH2-6-14	FIG. 2	2	9-1/2 TO 14	6"
CAH2-9-14	FIG. 2	2	9-1/2 TO 14	9"
CBM3-6-14	FIG. 3	3	9-1/2 TO 14	6"
CBM3-9-14	FIG. 3	3	9-1/2 TO 14	9"
CBM3-9E9-14	FIG. 3	3	9-1/2 TO 14	6"-9"-6"
CBM3-6M-14	FIG. 4	3	9-1/2 TO 14	6"

LATEST (REV)	REV	DATE	CHANGED BY	RESP. ENGINEER
---	--	-----	---	HOYT
DWN BY: DATE		TITLE: MOUNT, SINGLE BAND CLUSTER		
M E C		D		
HUBBELL		CHANCE		
DWN NO: SAC2M1-6M		D		

THIS DRAWING AND ITS CONTENTS ARE CONFIDENTIAL AND THE EXCLUSIVE PROPERTY OF HUBBELL AND CHANCE COMPANY. NO PUBLICATION, DISTRIBUTION OR REPRODUCTION OF THIS DRAWING OR ITS CONTENTS IS PERMITTED WITHOUT THE WRITTEN CONSENT OF HUBBELL AND CHANCE COMPANY.