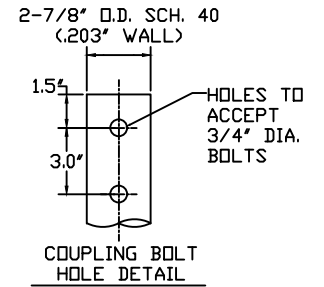
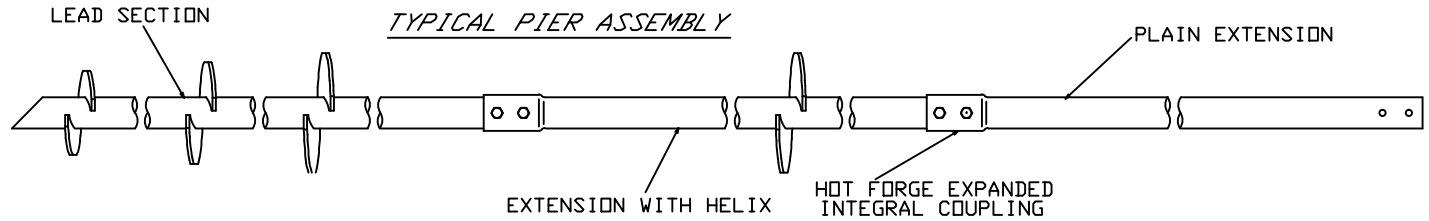


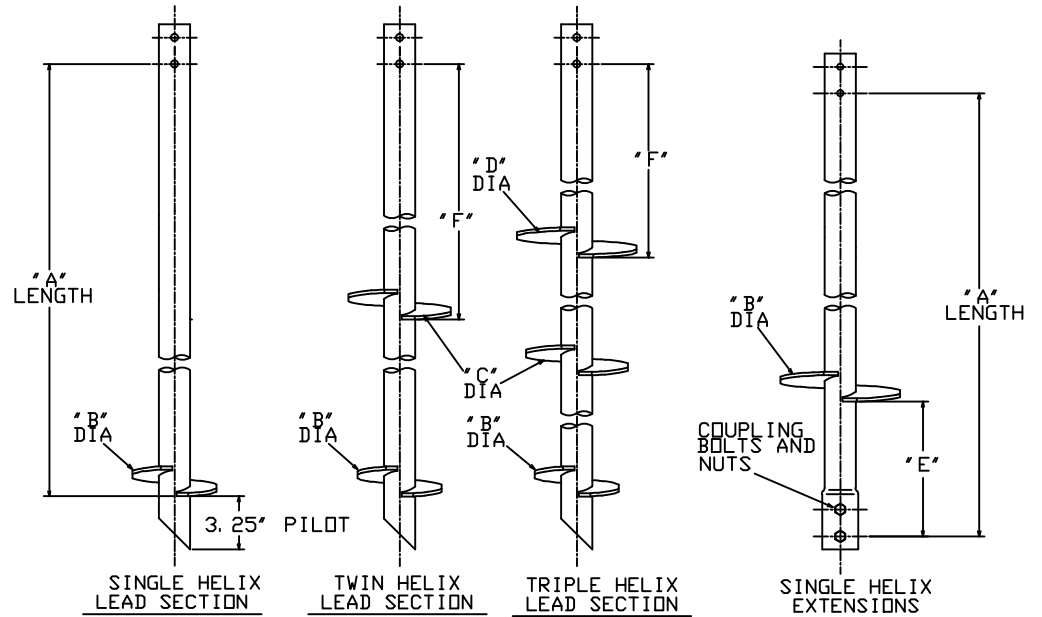
RS2875.203 MULTI-HELIX LEADS

TORQUE STRENGTH RATING-5,500 FT-LB
 ULTIMATE COMPRESSION STRENGTH-60 KIP



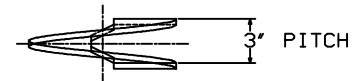
<u>LEAD SECTIONS</u>					
<i>CAT. NO.</i>	<i>"A"</i>	<i>"B"</i>	<i>"C"</i>	<i>"D"</i>	<i>"F"</i>
CRSLAABFF05	57"	8"	10"		33"
CRSLAABCF05	57"	8"	10"	12"	6"
CRSLABFFF05	57"	10"			
CRSLABCF05	57"	10"	12"		27"
CRSLABCF07	76"	10"	12"		46"
CRSLABCF07	76"	10"	12"	14"	10"
CRSLACFFF05	57"	12"			
CRSLADFFF07	76"	14"			

<u>HELICAL EXTENSIONS</u>			
<i>CAT. NO.</i>	<i>"A"</i>	<i>"B"</i>	<i>"E"</i>
CRSEADFFF05	57"	14"	15"



-NOTES-

1. HOT DIP GALVANIZED PER ASTM 153-(LATEST REVISION)
2. LEAD AND EXTENSION SECTION LENGTHS AND HELIX SPACINGS ARE NOMINAL,
3. NOMINAL SPACING BETWEEN HELIX PLATES IS THREE TIMES THE DIAMETER OF THE LOWER HELIX.
4. HELIX MATERIAL LOW CARBON STEEL MEETING THE GENERAL REQUIREMENTS OF AISI, OR ASTM A572, A656, OR A1018; 3/8" THICK.
5. PIPE SHAFT MATERIAL 2.5" NOMINAL, SCHEDULE 40 WALL THICKNESS PER ASTM A500 GRADE B.
6. MANUFACTURER TO HAVE IN EFFECT INDUSTRY RECOGNIZED WRITTEN QUALITY CONTROL FOR ALL MATERIALS AND MANUFACTURING PROCESSES.
7. ALL WELDING TO BE DONE BY WELDERS CERTIFIED UNDER SECTION 5 OF THE AWS CODE D1.1.
8. FOR PLAIN EXTENSIONS REFER TO DRAWING SACRSEAFFFF03.



HELIX MUST BE FORMED BY MATCHING METAL DIE
(SIDE VIEW)

CHANCE HELICAL	HUBBELL POWER SYSTEMS
TITLE RS2875.203 MULTI-HELIX LEADS AND HELICAL EXTENSIONS	
CONFIDENTIAL: THIS DRAWING AND ITS CONTENTS ARE CONFIDENTIAL AND THE EXCLUSIVE PROPERTY OF HUBBELL POWER SYSTEMS. NO PUBLICATION, DISTRIBUTION OR COPIES MAY BE MADE WITHOUT THE WRITTEN CONSENT OF HUBBELL POWER SYSTEMS. HUBBELL POWER SYSTEMS UNPUBLISHED ALL RIGHTS RESERVED UNDER THE COPYRIGHT LAWS.	SIZE DWG NO. CAT / PART / ASSY NO. REV SC SACRSLAABFF05 SEE CHART - DO NOT SCALE THIS DRAWING DRN BY TLW DATE 5/26/11 SHEET 1/1