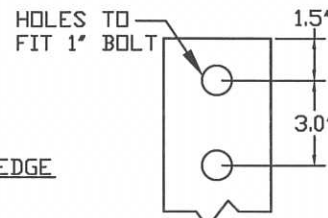
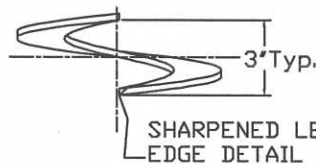
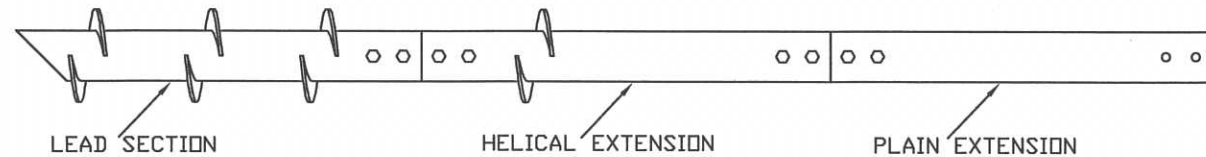


RS4500.337 LEADS AND HELICAL EXTENSIONS

TORQUE STRENGTH RATING = 23,000 FT-LB

ULTIMATE TENSION/COMPRESSION STRENGTH = 140 KIP

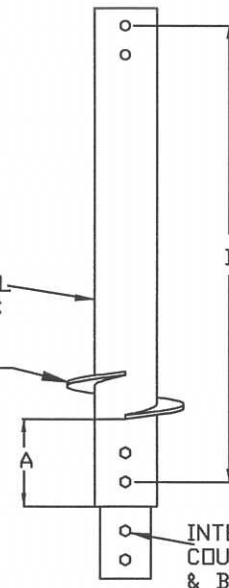
TYPICAL PIER INSTALLATION



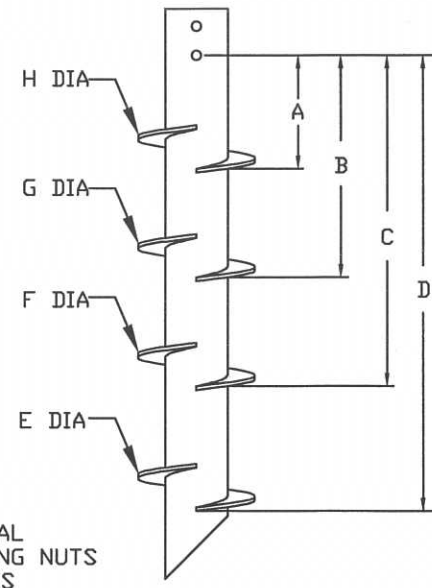
COUPLING BOLT HOLE PATTERN DETAIL

4.5" OD
.337" WALL
THICKNESS

E DIA



HELICAL EXTENSION



HELICAL LEAD

RS4500.337 LEADS AND EXTENSIONS								
CATALOG NO.	LEAD/EXT.	A (IN)	B (IN)	C (IN)	D (IN)	E (IN)	F (IN)	G (IN)
CRSLDAFFF07	LEAD	--	--	--	75	8	--	--
CRSLDABCF07	LEAD	--	21	51	75	8	10	12
CRSLDABCD10	LEAD	26	62	92	116	8	10	12
CRSEDDFFF05	EXTENSION	18	57	--	--	14	--	--
CRSLDDEFF10	LEAD	--	--	74	116	14	16	--
CRSLDBDEF10	LEAD	--	44	86	116	10	14	16

-NOTES-

1. HELIX MATERIAL: HOT ROLLED LOW ALLOY STEEL SHEET, OR PLATE PER ASTM A656 GRADE 80.
2. PIPE SHAFT MATERIAL: STEEL PIPE PER ASTM A500 GRADE B.
3. INTERNAL COUPLING MATERIAL: 3.75" OD X 0.5" WALL THICKNESS PER ASTM A513 TYPE 5.
4. COUPLING BOLTS: 1" DIA X 5.5" LONG HEX HEAD PER SAE J429 GRADE 8.
5. MANUFACTURER TO HAVE IN EFFECT INDUSTRY RECOGNIZED WRITTEN QUALITY CONTROL.
6. ALL WELDING TO BE DONE BY WELDERS CERTIFIED UNDER SECTION 5 OF THE AWS CODE D1.1.
7. LEAD AND EXTENSION SECTION LENGTHS AND HELIX SPACINGS ARE NOMINAL.
8. FOR PLAIN EXT. REFER TO DWG. SACRSEDDFFF03.

CHANCE

CONFIDENTIAL: THIS DRAWING AND ITS CONTENTS ARE CONFIDENTIAL AND THE EXCLUSIVE PROPERTY OF HUBBELL POWER SYSTEMS. NO PUBLICATION, DISTRIBUTION OR COPIES MAY BE MADE WITHOUT THE WRITTEN CONSENT OF HUBBELL POWER SYSTEMS. HUBBELL POWER SYSTEMS UNPUBLISHED ALL RIGHTS RESERVED UNDER THE COPYRIGHT LAWS.

HUBBELL POWER SYSTEMS

TITLE RS4500.337 LEADS AND HELICAL EXTENSIONS

SIZE C DWG NO. SACRSLDAFFF07 REV A
DO NOT SCALE THIS DRAWING DRN BY TLW DATE 6/24/11 SHEET 1/1