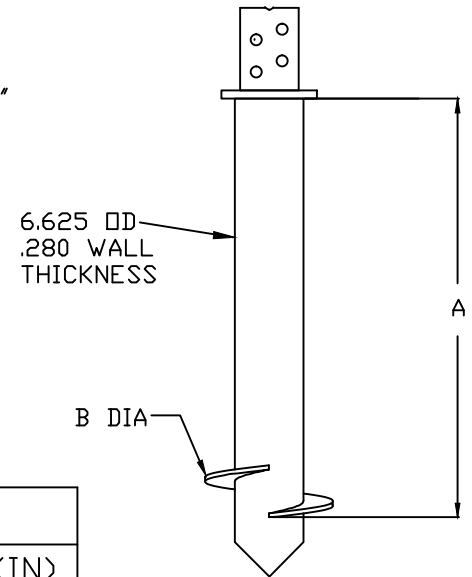
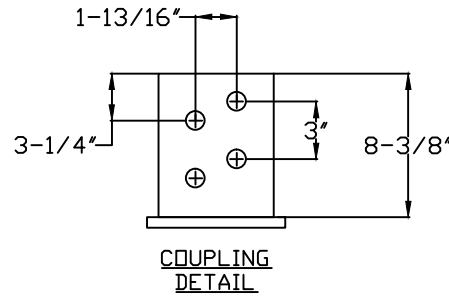
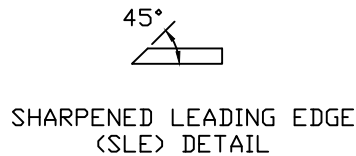
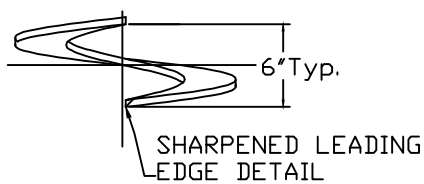
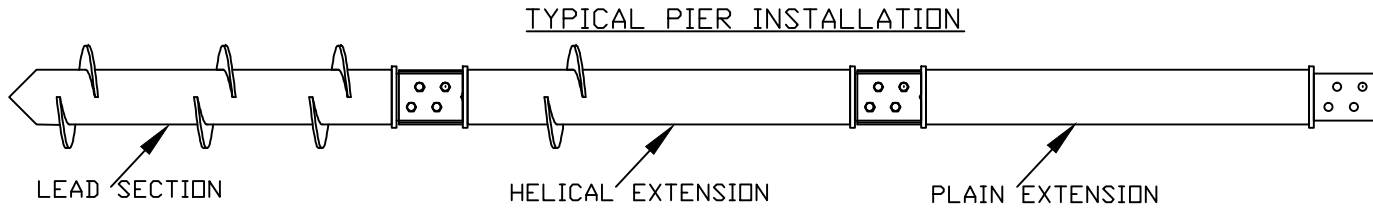


RS6625.280 LEADS

TORQUE STRENGTH RATING = 40,000 FT-LB
 ULTIMATE TENSION/COMPRESSIN STRENGTH = 200 KIP



--NOTES--

1. HELIX MATERIAL = HOT ROLLED LOW ALLOY STEEL SHEET, OR PLATE PER ASTM A656 GRADE 80, 1/2" THICK.
2. PIPE SHAFT MATERIAL = STEEL PIPE PER ASTM A500 GRADE B.
3. BOX COUPLING MATERIAL: HOT ROLLED STEEL PLATE PER ASTM A572 GRADE 50, MINIMUM YIELD = 50KSI.
4. MANUFACTURER TO HAVE IN EFFECT INDUSTRY RECOGNIZED WRITTEN QUALITY CONTROL.
5. ALL WELDING TO BE DONE BY WELDERS CERTIFIED UNDER SECTION 5 OF THE AWS CODE D1. 1.
6. FOR PLAIN EXT. REFER TO DWG. SACRSEEFFFF05.

RS6625.280 LEADS		
CATALOG NO.	A(IN)	B(IN)
CRSLECFFF07	78	12
CRSLEEFFF10	114	16

CHANCE HELICAL		HUBBELL POWER SYSTEMS POWER SYSTEMS, INC.	
CONFIDENTIAL: THIS DRAWING AND ITS CONTENTS ARE CONFIDENTIAL AND THE EXCLUSIVE PROPERTY OF HUBBELL POWER SYSTEMS, INC. NO PUBLICATION, DISTRIBUTION OR COPIES MAY BE MADE WITHOUT THE PRIOR WRITTEN CONSENT OF HUBBELL POWER SYSTEMS, INC. HUBBELL POWER SYSTEMS UNPUBLISHED ALL RIGHTS RESERVED UNDER THE COPYRIGHT LAWS.		RS6625.280 LEADS	
SIZE A	DWG NO. SACRSLECFFF07	DO NOT SCALE THIS DRAWING	REV -
DRN BY TLW	DATE 6/22/11	SHEET 1/1	