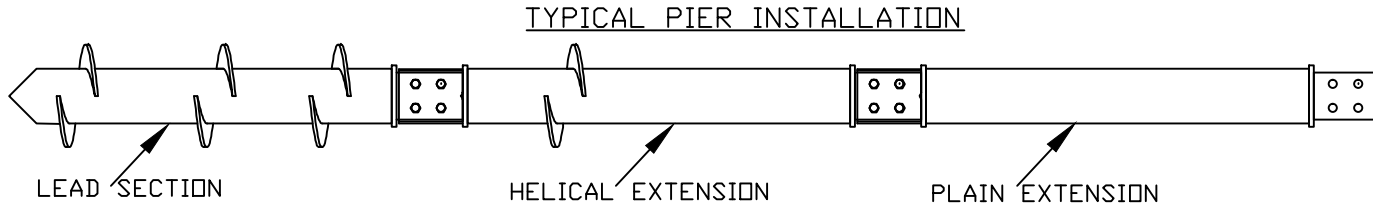
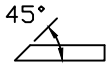
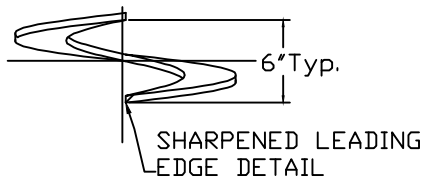


# RS8625.25 LEADS AND HELICAL EXTENSIONS

TORQUE STRENGTH RATING = 60,000 FT-LB  
 ULTIMATE TENSION/COMPRESSIN STRENGTH = 300 KIP



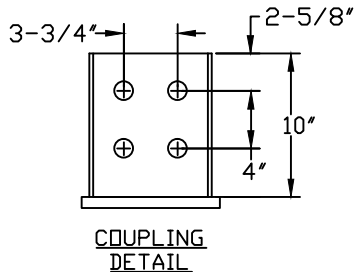
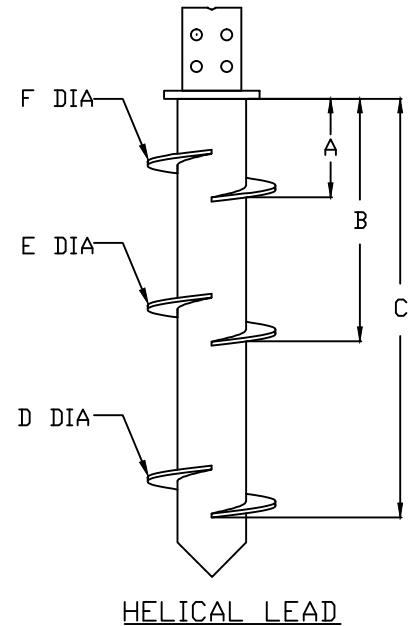
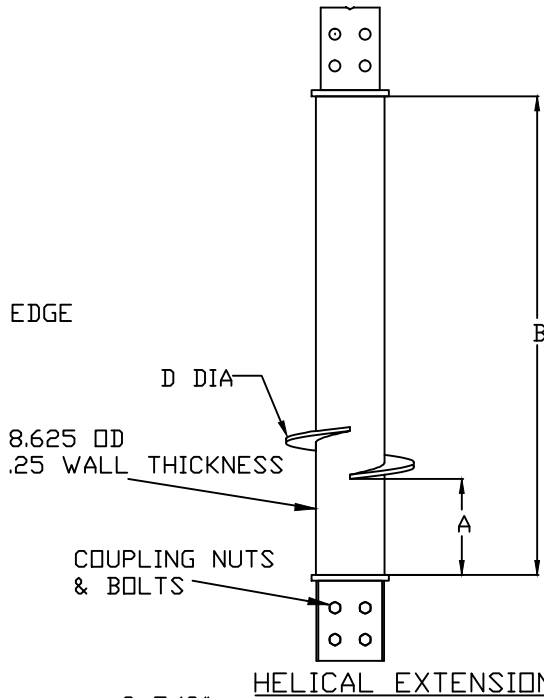
RS8625.25 LEADS AND HELICAL EXTENSIONS							
CATALOG NO.	EXT/LEAD	A(IN)	B(IN)	C(IN)	D(IN)	E(IN)	F(IN)
CRSLDFFFF07	LEAD	--	--	78	14	--	--
CRSLFEFFF15	LEAD	--	--	174	16	--	--
CRSLFEEEF10	LEAD	18	66	114	16	16	16
CRSEFEFFF10	EXTENSION	18	120	--	16	--	--



SHARPENED LEADING EDGE (SLE) DETAIL

## --NOTES--

1. HELIX MATERIAL = HOT ROLLED LOW ALLOY STEEL SHEET, OR PLATE PER ASTM A656 GRADE 80, 1/2" THICK.
2. PIPE SHAFT MATERIAL = STEEL PIPE PER ASTM A500 GRADE B.
3. BOX COUPLING MATERIAL: HOT ROLLED STEEL PLATE PER ASTM A572 GRADE 50, MINIMUM YIELD = 50KSI.
4. COUPLING STUD MATERIAL = PER AISI M1042, M1044, M1045. 1-1/4" DIA.
5. COUPLING NUT = PER ASTM A563.
6. MANUFACTURER TO HAVE IN EFFECT INDUSTRY RECOGNIZED WRITTEN QUALITY CONTROL.
7. ALL WELDING TO BE DONE BY WELDERS CERTIFIED UNDER SECTION 5 OF THE AWS CODE D1.1.
8. FOR PLAIN EXT. REFER TO DWG. SACRSEFFFFF05.



<b>CHANCE</b> <b>HELICAL</b>		<b>HUBBELL</b> POWER SYSTEMS POWER SYSTEMS, INC.	
RS8625.25 LEADS AND HELICAL EXTENSIONS			
CONFIDENTIAL: THIS DRAWING AND ITS CONTENTS ARE CONFIDENTIAL AND THE EXCLUSIVE PROPERTY OF HUBBELL POWER SYSTEMS, INC. NO PUBLICATION, DISTRIBUTION OR COPIES MAY BE MADE WITHOUT THE PRIOR WRITTEN CONSENT OF HUBBELL POWER SYSTEMS, INC. HUBBELL POWER SYSTEMS UNPUBLISHED ALL RIGHTS RESERVED UNDER THE COPYRIGHT LAWS.	SIZE A	DWG NO. SACRSLDFFFF07	REV -
DO NOT SCALE THIS DRAWING	DRN BY TLW	DATE 6/22/11	SHEET 1/1