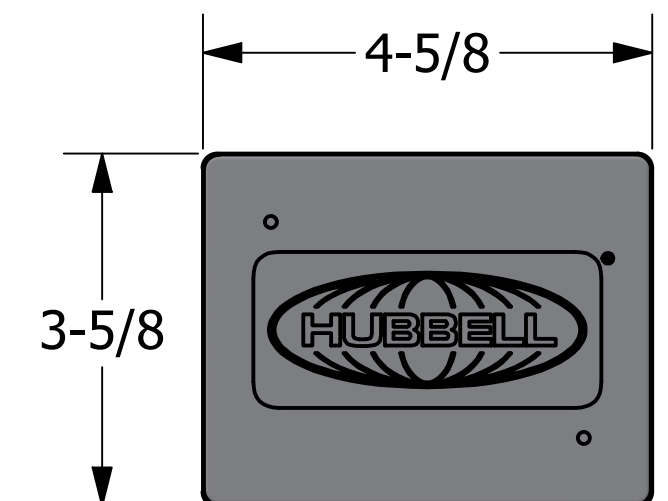
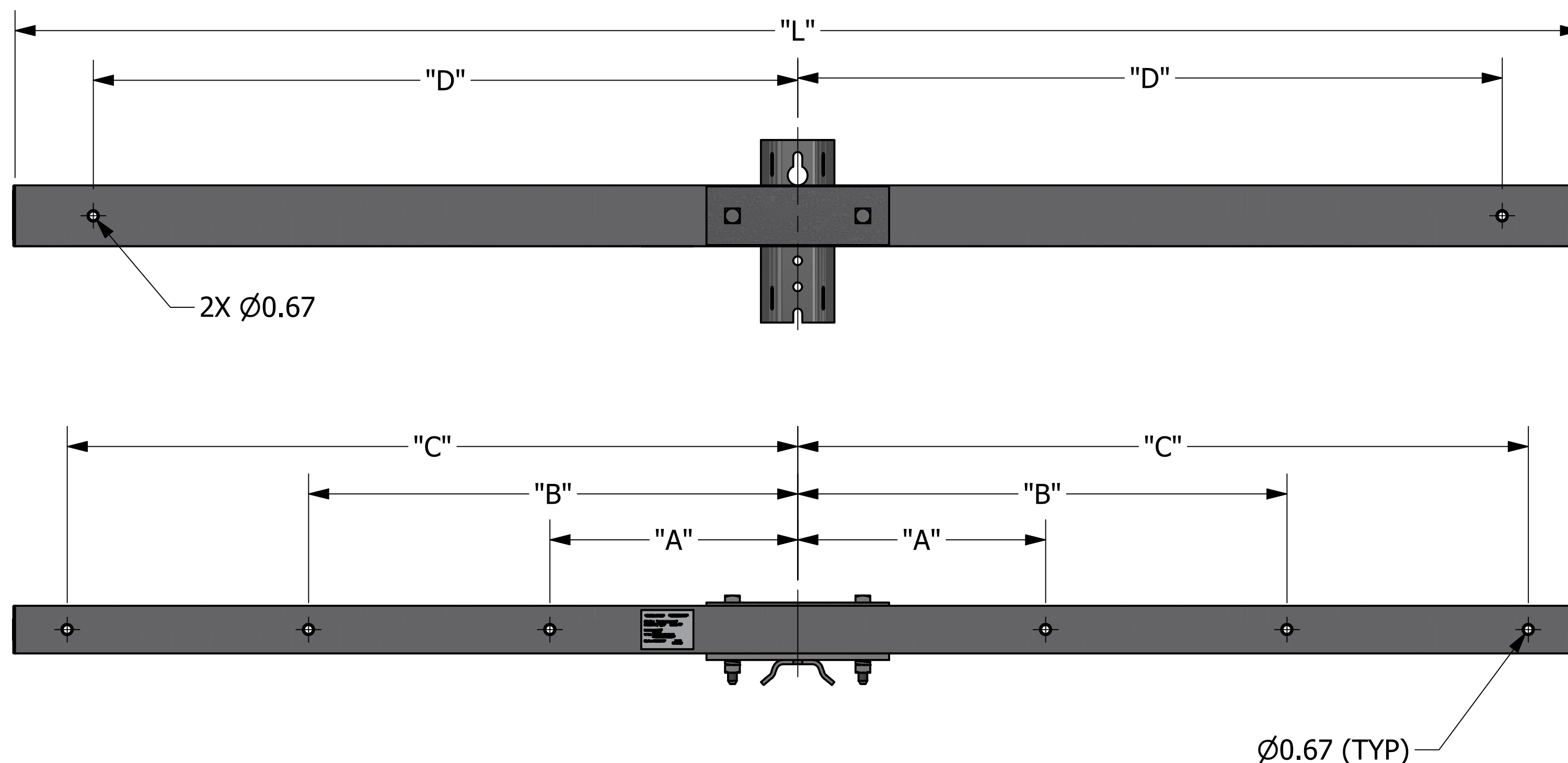
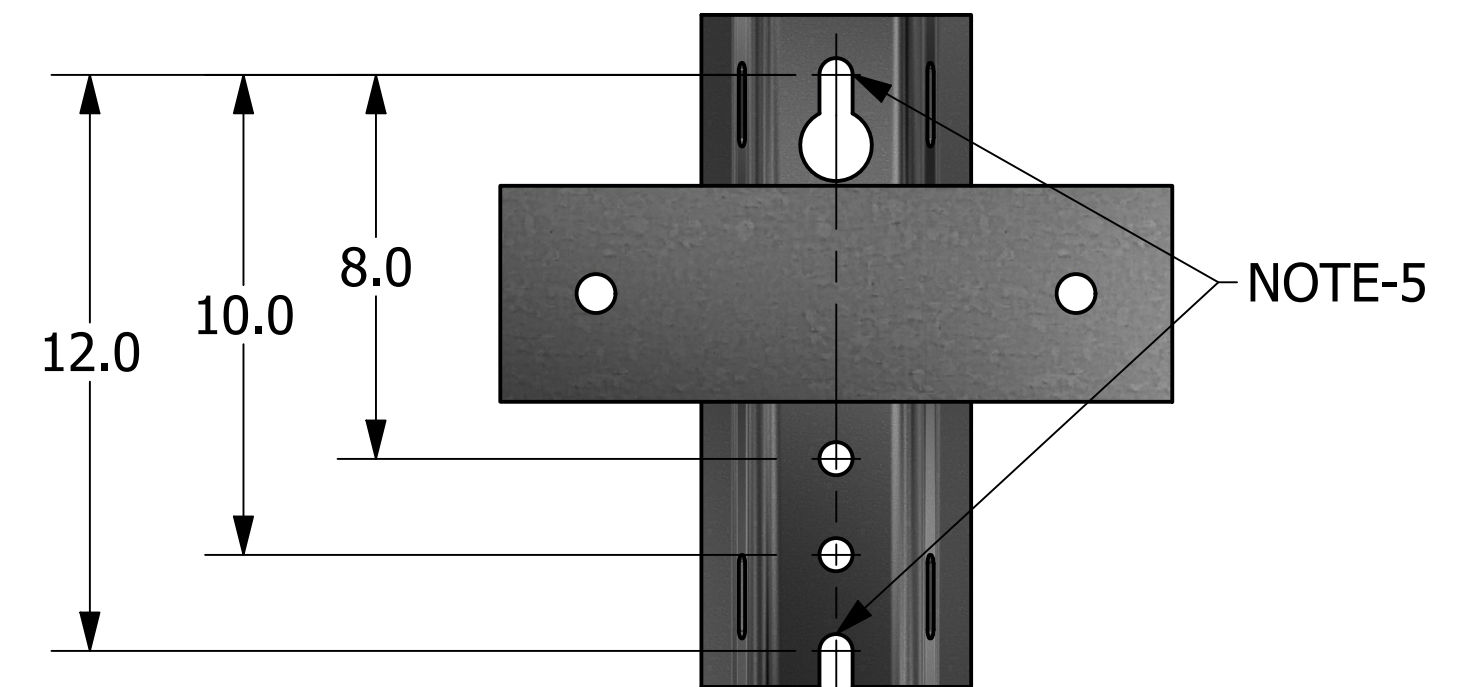



-NOTES-

- MATERIAL:
ARM: FIBERGLASS TUBE FILLED WITH CLOSED CELL FOAM
MOUNTING BRACKET & HARDWARE: GALVANIZED STEEL
- COLOR: GRAY (BROWN OPTIONAL) PAINTED WITH UV INHIBITOR PAINT
- ALL CROSSARM HOLES COME STANDARD WITH SLEEVES INSTALLED.
- RECOMMENDED HARDWARE TORQUE: 250 IN-LBS
- HOLES AVAILABLE IN OPTIONAL SIZES DEPENDING ON CATALOG NUMBER:
 "CTA": 5/8" HARDWARE
 "CTF": 3/4" HARDWARE
- FOR A COMPLETE LIST OF OPTIONS SEE SMART NUMBERING SYSTEM ON SHEET 2



| CATALOG NUMBER (NOTE-6) | RUS DRILL PATTERN | "L" | "A" | "B" | "C" | "D" | NO. OF WIRES | ULTIMATE RATING (PER WIRE) |
|----------------------------|----------------------|------|-----|-------|-----|-----|-----------------|-------------------------------|
| CTA22G096N4003B | 03 | 96" | 15" | N/A | 44" | 42" | 4 | 2,250 LBS |
| CTA22G096N6004B | 04 | 96" | 15" | 29.5" | 44" | 42" | 6 | 1,500 LBS |
| CTA22G120N4007B | N/A | 120" | 19" | N/A | 56" | 54" | 4 | 2,250 LBS |
| CTA22G120N6005B | 05 | 120" | 19" | 37.5" | 56" | 54" | 6 | 1,500 LBS |

| | | | |
|----------------------------------------------------------------------------------------------------------------------------------------------------------------------------------------------------------------------------------------------------------------------------------------------------------------------------|--|--------------------------------------------------------------------------------------------------------------------------|----------------------------------------------------------|
| CHANCE [®] | |  HUBBELL POWER SYSTEMS, INC. | |
| | | FIBERGLASS TANGENT ARM 22 SERIES | |
| <small>CONFIDENTIAL: THIS DRAWING AND ITS CONTENTS ARE CONFIDENTIAL AND THE EXCLUSIVE PROPERTY OF HUBBELL POWER SYSTEMS. NO PUBLICATION, DISTRIBUTION, OR COPIES MAY BE MADE WITHOUT THE WRITTEN CONSENT OF HUBBELL POWER SYSTEMS. HUBBELL POWER SYSTEMS UNPUBLISHED ALL RIGHTS RESERVED UNDER THE COPYRIGHT LAWS.</small> | | <small>SIZE</small> C | <small>CAT / PART / ASSY NO.</small> SEE CHART |
| | | <small>DWG NO.</small> SACTX22 | <small>REV</small> C |
| <small>DO NOT SCALE THIS DRAWING</small> | | <small>DRN BY</small> HOEK | <small>DATE</small> 4/29/24 |
| | | <small>SHEET 1 OF 2</small> | |

HPS 22 SERIES FIBERGLASS TANGENT SMART NUMBERING SYSTEM

CT A 22 G 096 N 4 003 B

MOUNTING BRACKET
"A": 5/8" MOUNTING HARDWARE
"F": 3/4" MOUNTING HARDWARE


COLOR
"G": GRAY
"B": BROWN

LENGTH
"060": 60 INCHES
"096": 96 INCHES
"120": 120 INCHES
"144": 144 INCHES

NO. OF WIRES
"4": 4-WIRES
"6": 6-WIRES

DRILL PATTERN
"003": RUS STANDARD 96" TANGENT (4-WIRE)
"004": RUS STANDARD 96" TANGENT (6-WIRE)
"007": HPS STANDARD 120" TANGENT (4-WIRE)
"005": RUS STANDARD 120" TANGENT (6-WIRE)
(CONSULT FACTORY FOR CUSTOM DRILL PATTERNS)

SLEEVES
ALL HPS CROSSARMS
COME STANDARD WITH
SLEEVES INSTALLED

| | | | |
|----------------------------------------------------------------------------------------------------------------------------------------------------------------------------------------------------------------------------------------------------------------------------------------------------------------------------|--|-------------------------------------------------------------------------------------------------------------------|---------------------------|
| CHANCE [®] | |  HUBBELL POWER SYSTEMS, INC. | |
| <small>CONFIDENTIAL: THIS DRAWING AND ITS CONTENTS ARE CONFIDENTIAL AND THE EXCLUSIVE PROPERTY OF HUBBELL POWER SYSTEMS. NO PUBLICATION, DISTRIBUTION, OR COPIES MAY BE MADE WITHOUT THE WRITTEN CONSENT OF HUBBELL POWER SYSTEMS. HUBBELL POWER SYSTEMS UNPUBLISHED ALL RIGHTS RESERVED UNDER THE COPYRIGHT LAWS.</small> | | TITLE FIBERGLASS TANGENT ARM 22 SERIES | |
| | | SIZE C | REV C |
| | | CAT / PART / ASSY NO. SEE CHART | DWG NO. SACTX22 |
| DO NOT SCALE THIS DRAWING | | DRN BY HOEK | DATE 4/29/24 SHEET 2 OF 2 |