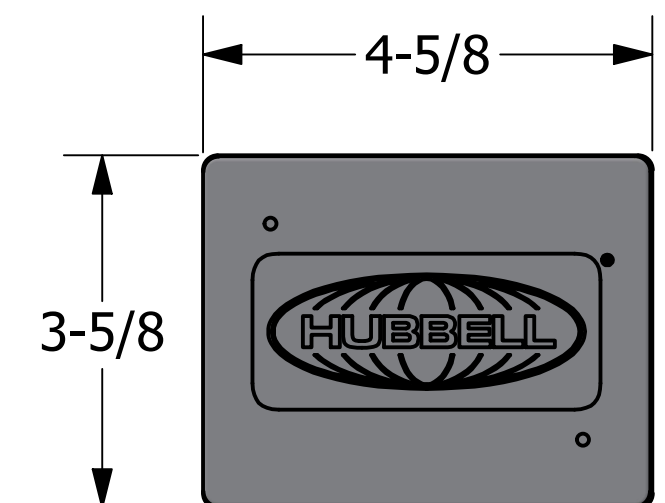
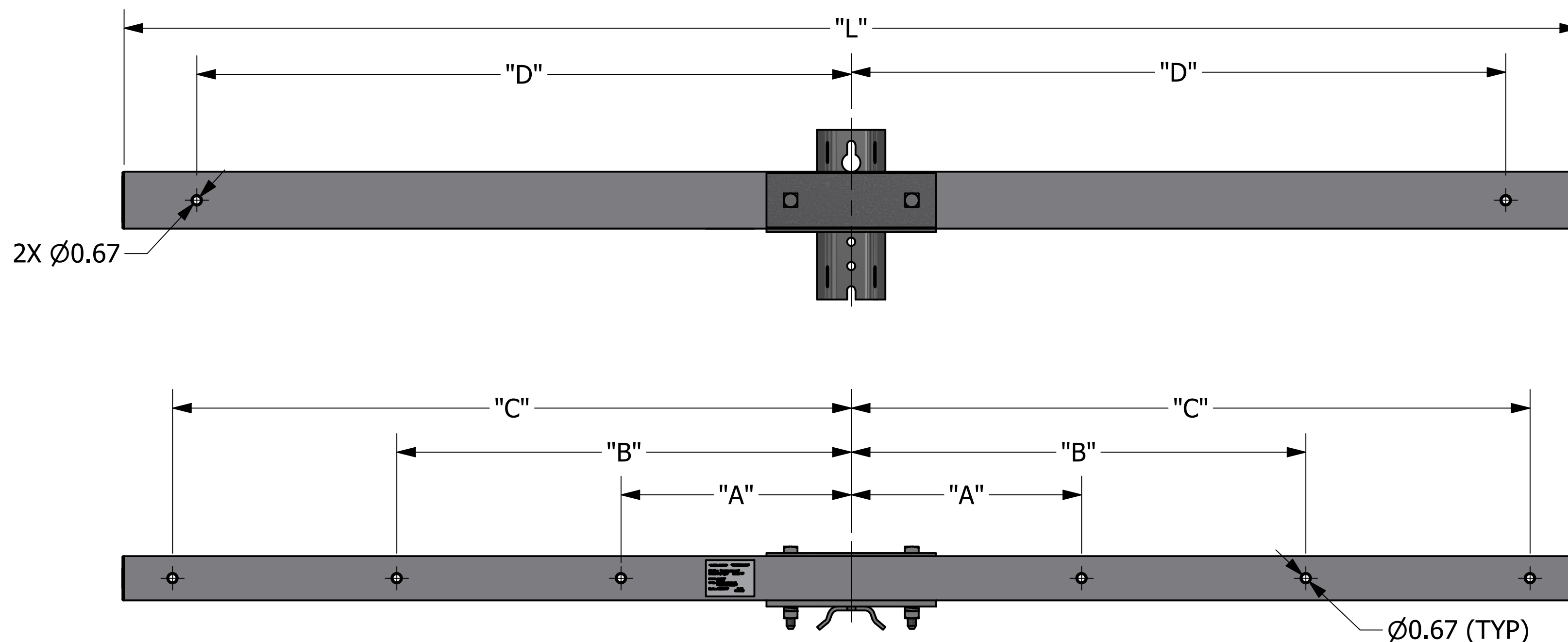
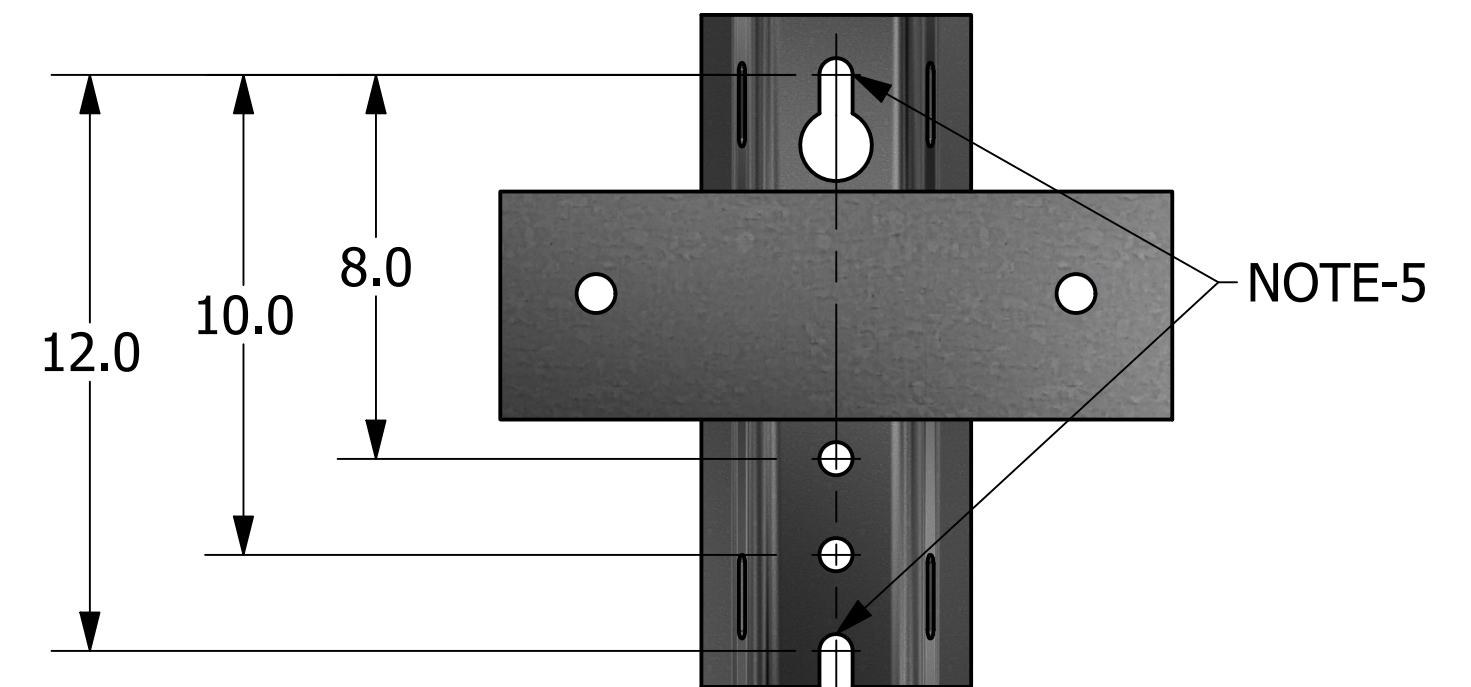


-NOTES-

1. MATERIAL:
ARM: FIBERGLASS TUBE FILLED WITH CLOSED CELL FOAM
MOUNTING BRACKET & HARDWARE: GALVANIZED STEEL
2. COLOR: GRAY (BROWN OPTIONAL) PAINTED WITH UV INHIBITOR PAINT
3. ALL CROSSARM HOLES COME STANDARD WITH SLEEVES INSTALLED.
4. RECOMMENDED HARDWARE TORQUE: 250 IN-LBS
5. HOLES AVAILABLE IN OPTIONAL SIZES DEPENDING ON CATALOG NUMBER:
 "CTA": 5/8" HARDWARE
 "CTF": 3/4" HARDWARE
6. FOR A COMPLETE LIST OF OPTIONS SEE SMART NUMBERING SYSTEM ON SHEET 2

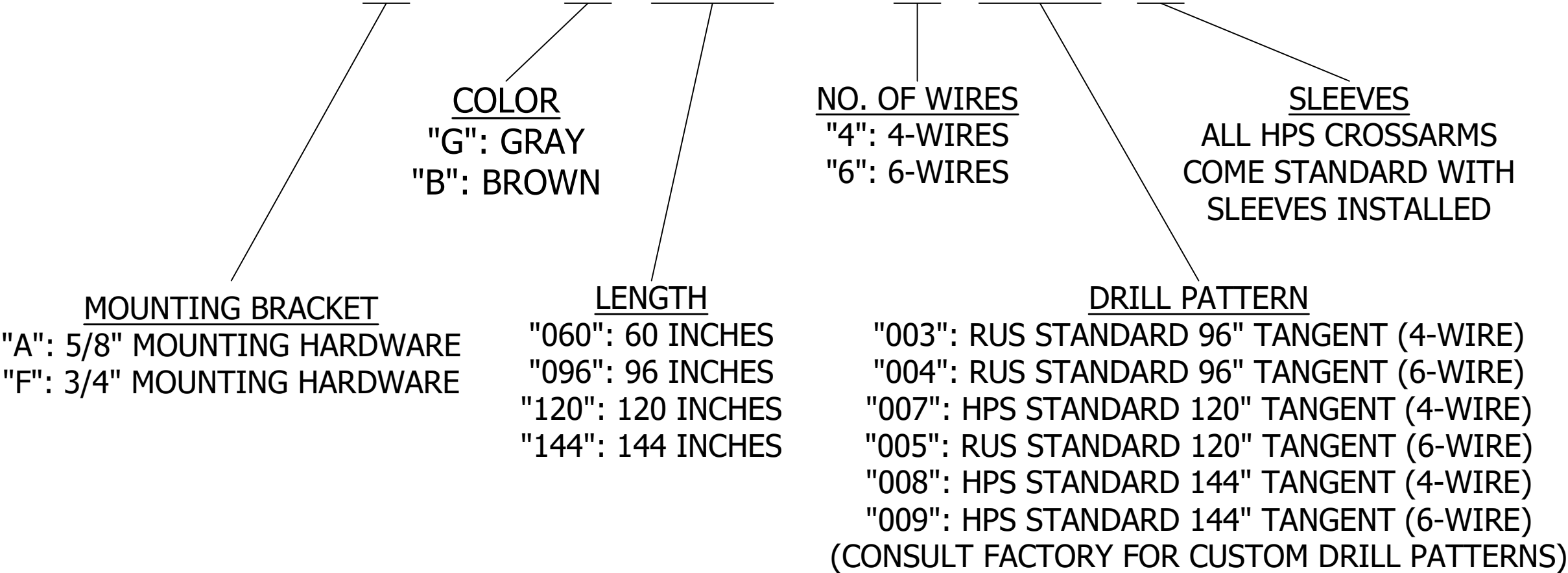



CATALOG NUMBER (NOTE-6)	RUS DRILL PATTERN	"L"	"A"	"B"	"C"	"D"	NO. OF WIRES	ULTIMATE RATING (PER WIRE)
CTA30G096N4003B	03	96"	15"	N/A	44"	42"	4	5,000 LBS
CTA30G096N6004B	04	96"	15"	29.5"	44"	42"	6	3,250 LBS
CTA30G120N4007B	N/A	120"	19"	N/A	56"	54"	4	5,000 LBS
CTA30G120N6005B	05	120"	19"	37.5"	56"	54"	6	3,250 LBS
CTA30G144N4008B	N/A	144"	38"	N/A	66"	68"	4	5,000 LBS
CTA30G144N4009B	N/A	144"	38"	53"	66"	68"	6	3,250 LBS

CHANCE [®]		 HUBBELL POWER SYSTEMS, INC.	
		FIBERGLASS TANGENT ARM 30 SERIES	
<small>CONFIDENTIAL: THIS DRAWING AND ITS CONTENTS ARE CONFIDENTIAL AND THE EXCLUSIVE PROPERTY OF HUBBELL POWER SYSTEMS. NO PUBLICATION, DISTRIBUTION, OR COPIES MAY BE MADE WITHOUT THE WRITTEN CONSENT OF HUBBELL POWER SYSTEMS. HUBBELL POWER SYSTEMS UNPUBLISHED ALL RIGHTS RESERVED UNDER THE COPYRIGHT LAWS.</small>		<small>SIZE</small> C	<small>CAT / PART / ASSY NO.</small> SEE CHART
		<small>DWG NO.</small> SACTX30	<small>REV</small> A
<small>DO NOT SCALE THIS DRAWING</small>		<small>DRN BY</small> HOEK	<small>DATE</small> 4/29/24
		<small>SHEET 1 OF 2</small>	

HPS 30 SERIES FIBERGLASS TANGENT SMART NUMBERING SYSTEM

CT A 30 G 096 N 4 003 B



CHANCE [®]		 HUBBELL POWER SYSTEMS, INC.	
CONFIDENTIAL: THIS DRAWING AND ITS CONTENTS ARE CONFIDENTIAL AND THE EXCLUSIVE PROPERTY OF HUBBELL POWER SYSTEMS. NO PUBLICATION, DISTRIBUTION, OR COPIES MAY BE MADE WITHOUT THE WRITTEN CONSENT OF HUBBELL POWER SYSTEMS. HUBBELL POWER SYSTEMS UNPUBLISHED ALL RIGHTS RESERVED UNDER THE COPYRIGHT LAWS.		TITLE FIBERGLASS TANGENT ARM 30 SERIES	
		SIZE C	CAT / PART / ASSY NO. SEE CHART
		DO NOT SCALE THIS DRAWING	DRN BY HOEK
		DATE 4/29/24	SHEET 2 OF 2
		DWG NO. SACTX30	REV A