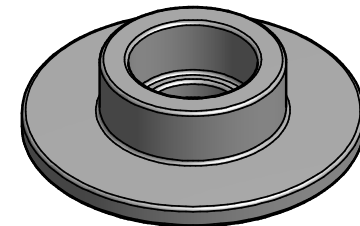



SECTION A-A

NOTES:

- 1.) MATERIAL: DUCTILE IRON PER ASTM A536.
- 2.) HOT DIP GALVANIZED PER ASTM A153.



CATALOG NUMBER	"A"
CW11	11/16"
CW11A	13/16"

CHANCE [®]		 HUBBELL POWER SYSTEMS, Inc.			
CONFIDENTIAL: THIS DRAWING AND ITS CONTENTS ARE CONFIDENTIAL AND THE EXCLUSIVE PROPERTY OF HUBBELL POWER SYSTEMS. NO PUBLICATION, DISTRIBUTION OR COPIES MAY BE MADE WITHOUT THE WRITTEN CONSENT OF HUBBELL POWER SYSTEMS. HUBBELL POWER SYSTEMS UNPUBLISHED ALL RIGHTS RESERVED UNDER THE COPYRIGHT LAWS.		TITLE CENTERING WASHER			
		SIZE SB	CAT / PART / ASSY NO. SEE CHART	DWG NO. SACW11	
		DO NOT SCALE THIS DRAWING	DRN BY JJL	DATE 04/03/14	REV -
				DATE 04/03/14	SHEET 1 OF 1