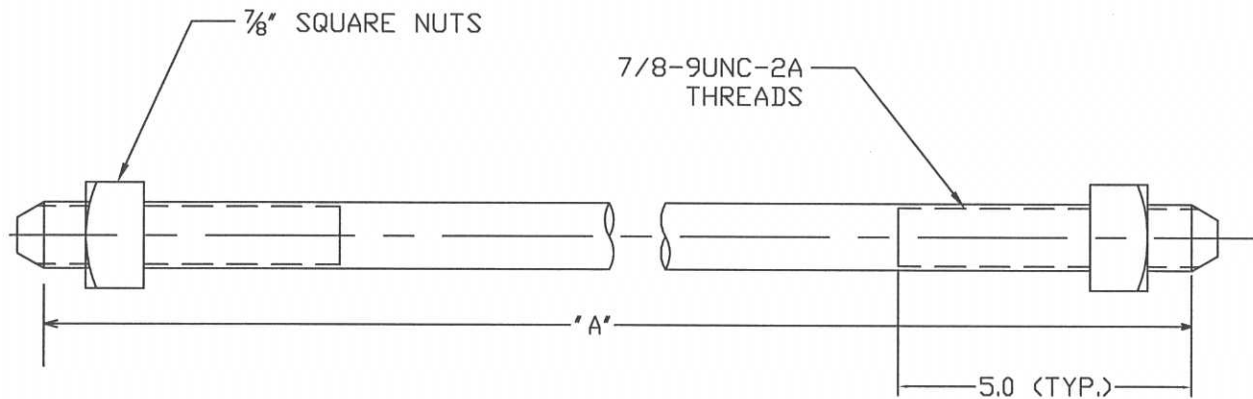



NOTES:
 1.) MATERIAL: STEEL, HOT DIP GALVANIZED PER ASTM A153.



| CATALOG NUMBER | DESCRIPTION | "A" |
|----------------|-------------------|-----|
| PSDE781200 | DOUBLE ENDED BOLT | 12 |
| PSDE781400 | DOUBLE ENDED BOLT | 14 |
| PSDE781600 | DOUBLE ENDED BOLT | 16 |
| PSDE781800 | DOUBLE ENDED BOLT | 18 |
| PSDE782000 | DOUBLE ENDED BOLT | 20 |
| PSDE782200 | DOUBLE ENDED BOLT | 22 |
| PSDE782400 | DOUBLE ENDED BOLT | 24 |
| PSDE782600 | DOUBLE ENDED BOLT | 26 |
| PSDE782800 | DOUBLE ENDED BOLT | 28 |
| PSDE783000 | DOUBLE ENDED BOLT | 30 |
| PSDE783200 | DOUBLE ENDED BOLT | 32 |
| PSDE783400 | DOUBLE ENDED BOLT | 34 |
| PSDE783600 | DOUBLE ENDED BOLT | 36 |
| PSDE783800 | DOUBLE ENDED BOLT | 38 |
| PSDE784000 | DOUBLE ENDED BOLT | 40 |
| PSDE784200 | DOUBLE ENDED BOLT | 42 |

| | | | |
|-------------------------------------------------------------------------------------------------------------------------------------------------------------------------------------------------------------------------------------------------------------------------------------------------------------|------------|-----------------------------------------------------------------------------------------------------------------------------------------------------------|----------------|
| CHANCE TOLERANCE CHART | |  HUBBELL® POWER SYSTEMS <small>POWER SYSTEMS, INC.</small> | |
| CONFIDENTIAL: THIS DRAWING AND ITS CONTENTS ARE CONFIDENTIAL AND THE EXCLUSIVE PROPERTY OF HUBBELL POWER SYSTEMS. NO PUBLICATION, DISTRIBUTION OR COPIES MAY BE MADE WITHOUT THE WRITTEN CONSENT OF HUBBELL POWER SYSTEMS. HUBBELL POWER SYSTEMS UNPUBLISHED. ALL RIGHTS RESERVED UNDER THE COPYRIGHT LAWS. | | TITLE 7/8" DOUBLE ENDED BOLTS | |
| SIZE | DWG NO. | CAT / PART / ASSY NO. | REV |
| SB SADE781200 | SEE CHART | SEE CHART | --- |
| DO NOT SCALE THIS DRAWING | DRN BY JJL | DATE 10/31/11 | SHEET 01 OF 01 |