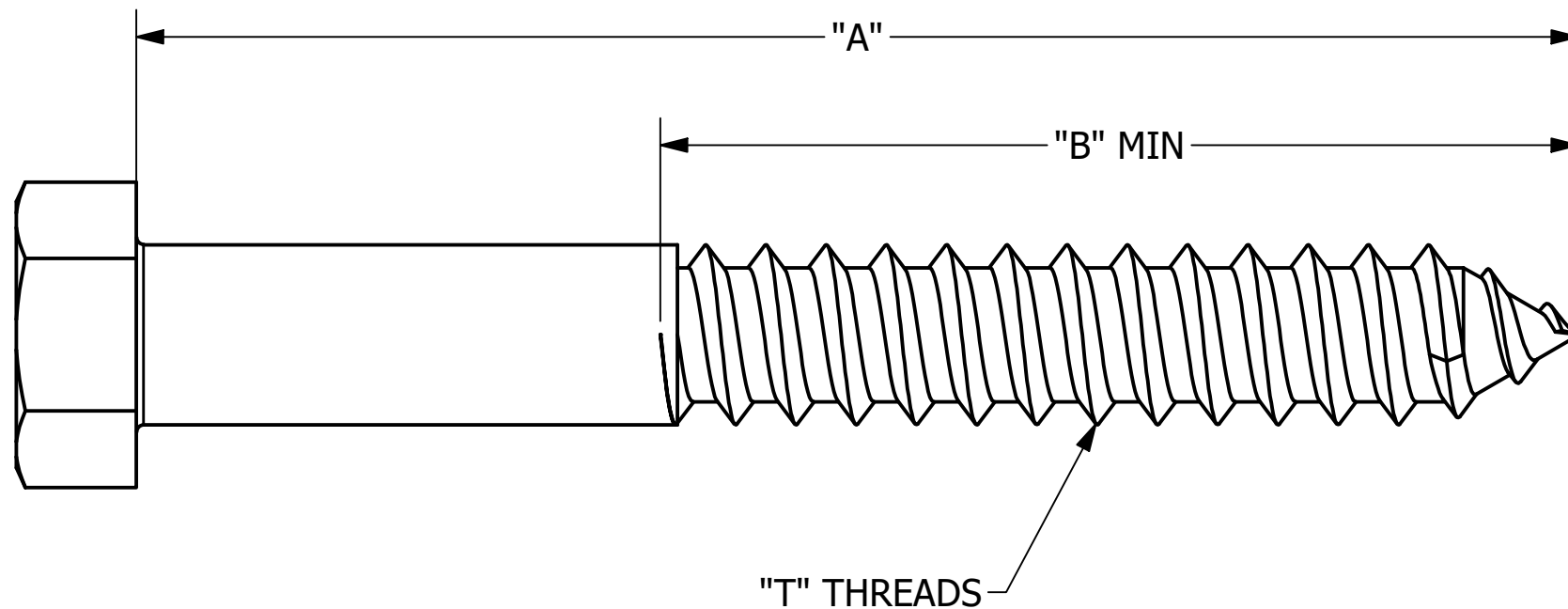
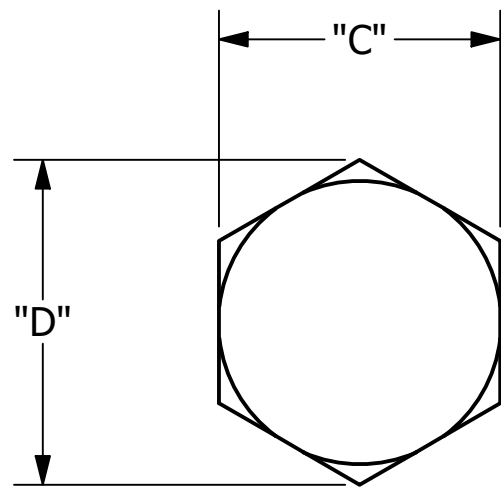


CATALOG NUMBER	"T"	"A"	"B"	"C"	"D"	TENSILE STRENGTH
DF3L3	3/8-7	3	2	.553	.635	3,500 LBS
PSC2050591	1/2-6	4	2.5	.738	.846	6,500 LBS
DF3L175	3/8-7	1.75	1.38	.553	.635	3,500 LBS
PSC2050862	1/2-6	3	2.5	.738	.846	6,500 LBS



- NOTES -  
1. TENSILE RATING PER IEEE C135.3

<b>CHANCE</b> <sup>®</sup>	<b>HUBBELL</b> <sup>®</sup> HUBBELL POWER SYSTEMS, INC. POWER SYSTEMS, INC.	
	TITLE <b>GIMLET POINT LAG SCREW</b>	
CONFIDENTIAL: THIS DRAWING AND ITS CONTENTS ARE CONFIDENTIAL AND THE EXCLUSIVE PROPERTY OF HUBBELL POWER SYSTEMS. NO PUBLICATION, DISTRIBUTION, OR COPIES MAY BE MADE WITHOUT THE WRITTEN CONSENT OF HUBBELL POWER SYSTEMS. HUBBELL POWER SYSTEMS UNPUBLISHED ALL RIGHTS RESERVED UNDER THE COPYRIGHT LAWS.	SIZE <b>B</b>	CAT / PART / ASSY NO. <b>SEE TABLE</b>
DO NOT SCALE THIS DRAWING	DRN BY TOLIVER	DWG NO. <b>SADF3L</b>
		REV <b>B</b>
	DATE 1/19/22	SHEET 1 OF 1