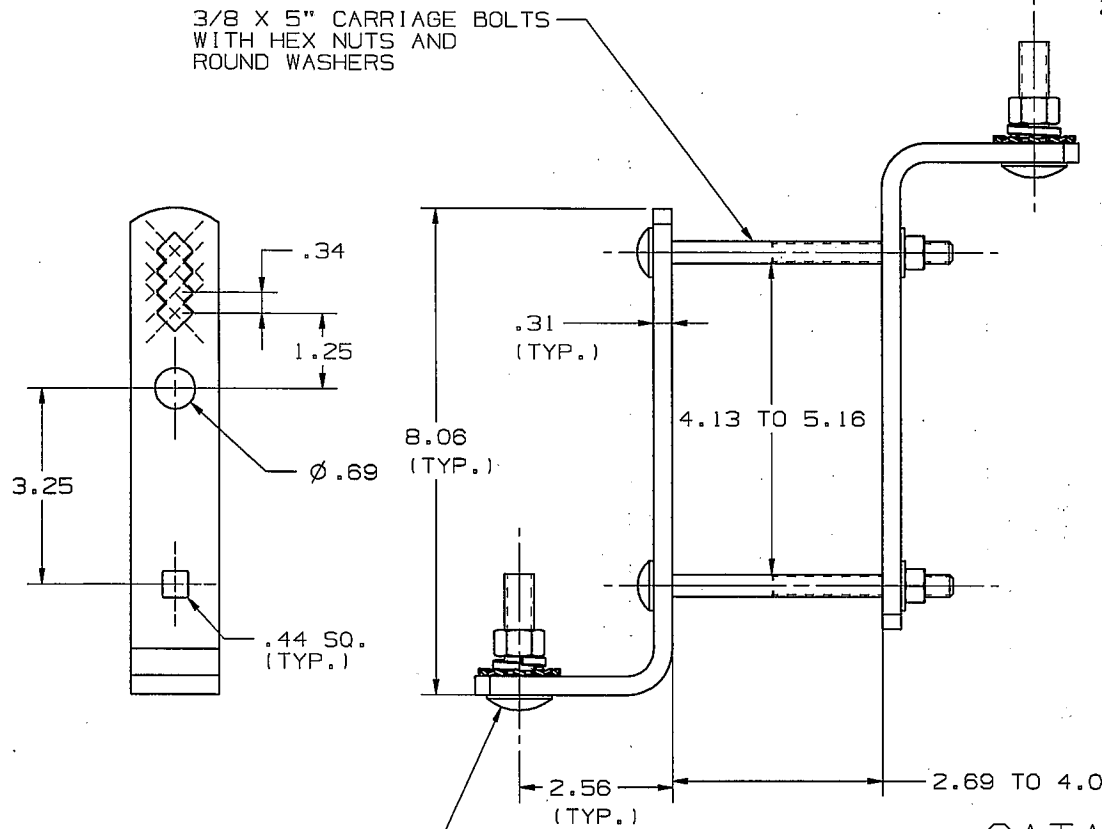


NOTES :

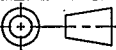



- 1.) ASSEMBLED COMPLETE AS SHOWN.
- 2.) MATERIAL: STEEL, HOT DIP GALVANIZED PER ASTM A153 (LATEST REVISION).



3/8 X 5" CARRIAGE BOLTS  
WITH HEX NUTS AND  
ROUND WASHERS

1/2 X 2" CARRIAGE BOLT  
WITH HEX NUT, SPLIT RING LOCKWASHER,  
AND INT./EXT. TOOTH LOCKWASHER (TYP.)

CATALOG NUMBER : DM40B2

LATEST EC NO:		REV.	DATE	CHANGED BY	RESP ENGINEER
---		-	---	---	---
				DO NOT SCALE THIS DWG	THIRD ANGLE PROJECTION 
				ISO DUAL DIMENSIONS IN=INCH, MM=MILLIMETER	
DRN BY:	DATE	TITLE:		SIZE	
JUL	03-19-09	BRACKET, CROSSARM ASSY.		B	
				 DWG NO: SADM40B2	

CONFIDENTIAL: THIS DRAWING AND ITS CONTENTS ARE CONFIDENTIAL AND THE EXCLUSIVE PROPERTY OF HUBBELL / A.B. CHANCE COMPANY. NO PUBLICATION, DISTRIBUTION OR COPIES MAY BE MADE WITHOUT WRITTEN CONSENT BY HUBBELL / A.B. CHANCE COMPANY. © 2001 HUBBELL/A.B. CHANCE. UNPUBLISHED - ALL RIGHTS RESERVED UNDER THE COPYRIGHT LAWS