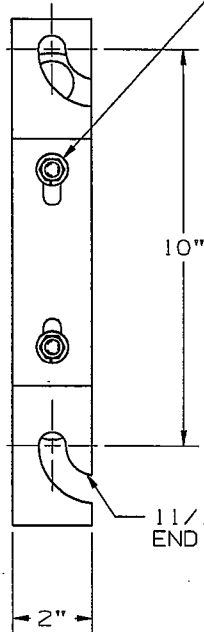
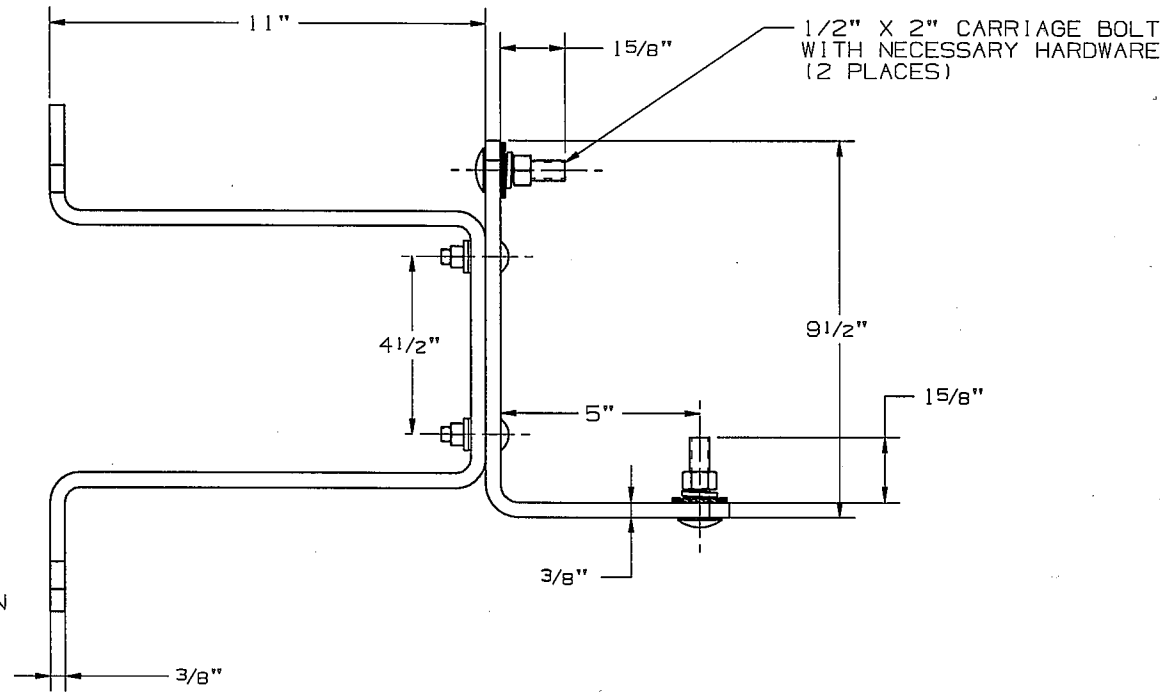


3/8" X 1-1/2" CARRIAGE BOLT WITH HARDWARE (2 PLACES)



11/16" CURVED OPEN END SLOT (TYP.)



1/2" X 2" CARRIAGE BOLT WITH NECESSARY HARDWARE (2 PLACES)

CATALOG NUMBER : DM42B1

NOTES :

- 1.) MATERIAL: STEEL, HOT DIP GALVANIZED PER ASTM A153.
- 2.) ASSEMBLED COMPLETE AS SHOWN.

|   |  |      |      |                  |                               |
|---|--|------|------|------------------|-------------------------------|
| LATEST EC NO:   |  | REV. | DATE | CHANGED BY       | RESP ENGINEER                 |
| ---   |  | -    | ---  | ---              | ---                           |
| DO NOT SCALE THIS DWG<br>THIRD ANGLE PROJECTION<br>ISO DUAL DIMENSIONS.<br>IN=INCH, MM=MILLIMETER |  |      |      |                  |                               |
|   |  |      |      |                  | DRN BY: JJL<br>DATE: 12-04-09 |
|   |  |      |      | DWG NO: SADM42B1 |                               |

CONFIDENTIAL: THIS DRAWING AND ITS CONTENTS ARE CONFIDENTIAL AND THE EXCLUSIVE PROPERTY OF HUBBELL / A.B. CHANCE COMPANY. NO PUBLICATION, DISTRIBUTION OR COPIES MAY BE MADE WITHOUT WRITTEN CONSENT BY HUBBELL / A.B. CHANCE COMPANY. © 2001 HUBBELL/A.B. CHANCE. UNPUBLISHED - ALL RIGHTS RESERVED UNDER THE COPYRIGHT LAWS