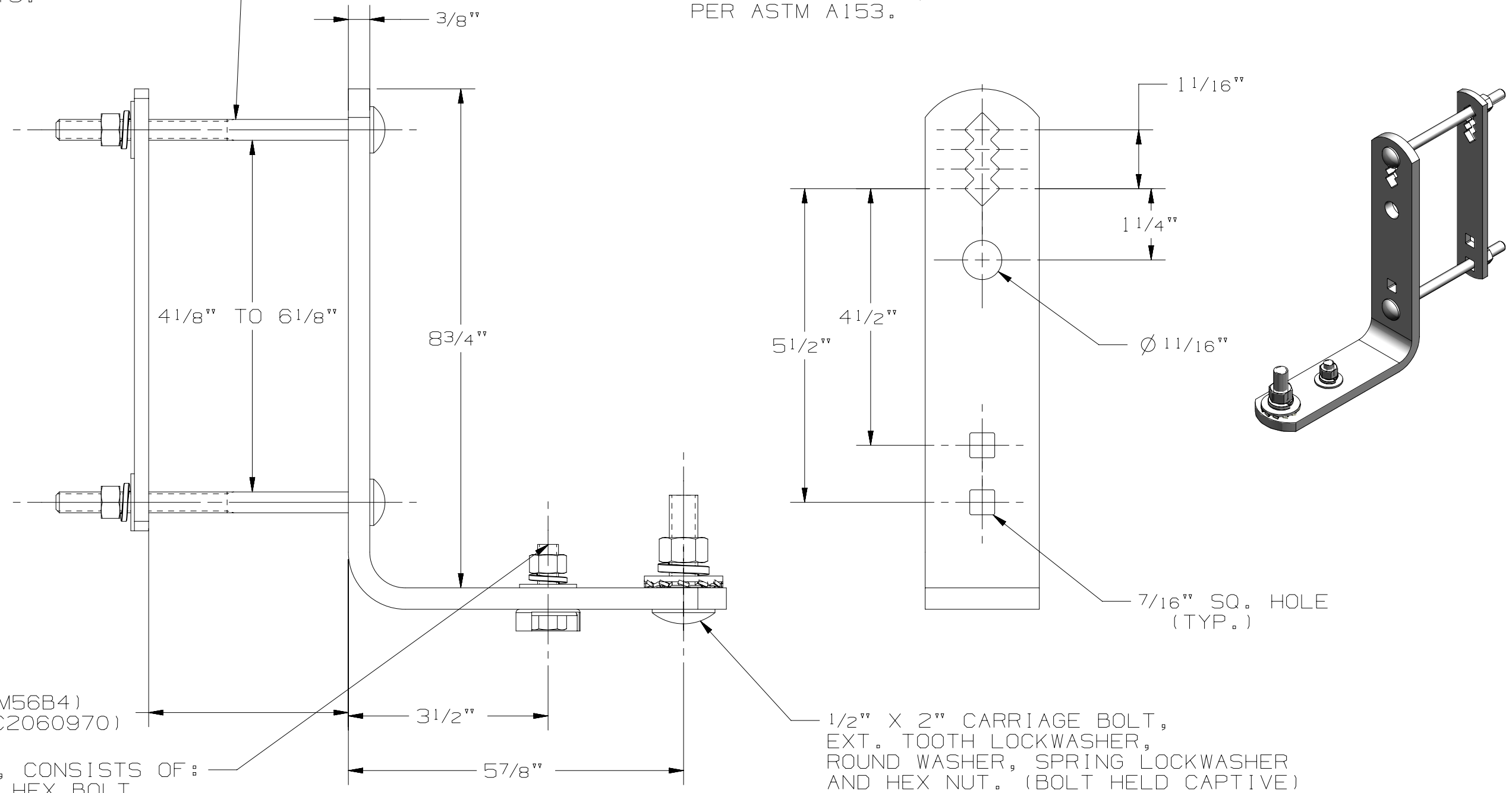


3/8" X "A" CARRIAGE BOLTS WITH ROUND WASHERS, LOCKWASHERS AND HEX NUTS.

### NOTES :

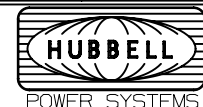
1.) MATERIAL: STEEL, HOT DIP GALVANIZED PER ASTM A153.



GROUND LUG, CONSISTS OF:  
3/8" X 1 1/4" HEX BOLT,  
CUP WASHER, 2 ROUND WASHERS,  
LOCKWASHER AND HEX NUT.  
(NOT INCLUDED ON PSC2060970)

CATALOG NUMBER	"A"
DM56B4	5 1/2"
PSC2060970	7"

LATEST EC NO:	REV.	DATE	CHANGED BY	RESP ENGINEER
---	A	-----	---	---
			DO NOT SCALE THIS DWG	THIRD ANGLE PROJECTION
			ISO DUAL DIMENSIONS IN=INCH, MM=MILLIMETER	
DRN BY:	DATE	TITLE:		SIZE
JUL	09-03-10	CUTOUT/ARRESTER BRACKET		B



DWG NO:  
SADM56B4

CONFIDENTIAL: THIS DRAWING AND ITS CONTENTS ARE CONFIDENTIAL AND THE EXCLUSIVE PROPERTY OF HUBBELL / A.B. CHANCE COMPANY. NO PUBLICATION, DISTRIBUTION OR COPIES MAY BE MADE WITHOUT WRITTEN CONSENT BY HUBBELL / A.B. CHANCE COMPANY. © 2001 HUBBELL/A.B. CHANCE. UNPUBLISHED - ALL RIGHTS RESERVED UNDER THE COPYRIGHT LAWS