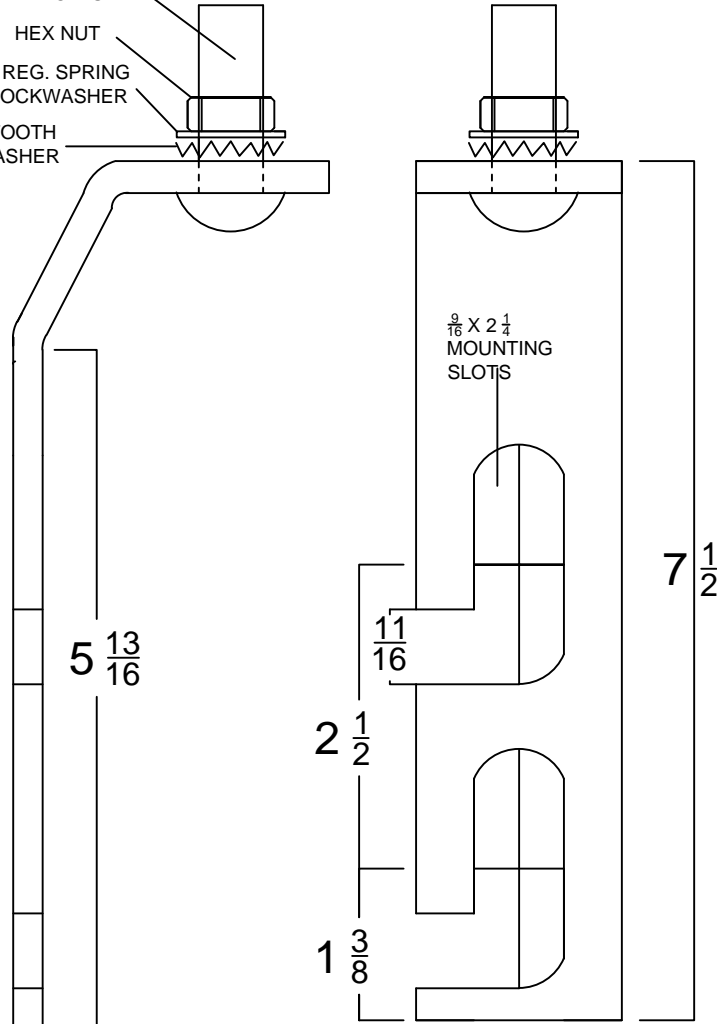


$\frac{1}{2}$ X 2
 CARRIAGE
 BOLTS
 HEX NUT
 $\frac{1}{2}$ REG. SPRING
 LOCKWASHER
 $\frac{1}{2}$ EXT. TOOTH
 LOCKWASHER




--NOTES--

1. GALV. PER ASTM A153

2. CARRIAGE BOLT TO BE HELD CAPTIVE IN HOLE

CATALOG NUMBER
DM60B1

CHANCE [®] TOLERANCE CHART		 HUBBELL [®] POWER SYSTEMS POWER SYSTEMS, INC.			
CONFIDENTIAL: THIS DRAWING AND ITS CONTENTS ARE CONFIDENTIAL AND THE EXCLUSIVE PROPERTY OF HUBBELL POWER SYSTEMS. NO PUBLICATION, DISTRIBUTION OR COPIES MAY BE MADE WITHOUT THE WRITTEN CONSENT OF HUBBELL POWER SYSTEMS. HUBBELL POWER SYSTEMS UNPUBLISHED ALL RIGHTS RESERVED UNDER THE COPYRIGHT LAWS.					
TITLE MOUNTING BRACKET ASSEMBLY		SIZE B	DWG NO. SADM60B1	CAT / PART / ASSY NO. DM60B1	REV -
DO NOT SCALE THIS DRAWING	DRN BY JMK	DATE 01/22/13	SHEET 1 OF 1		