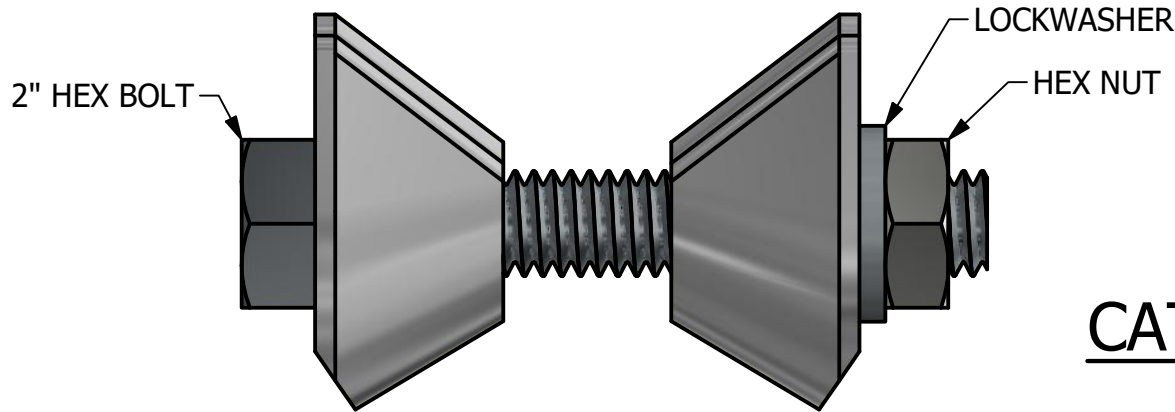
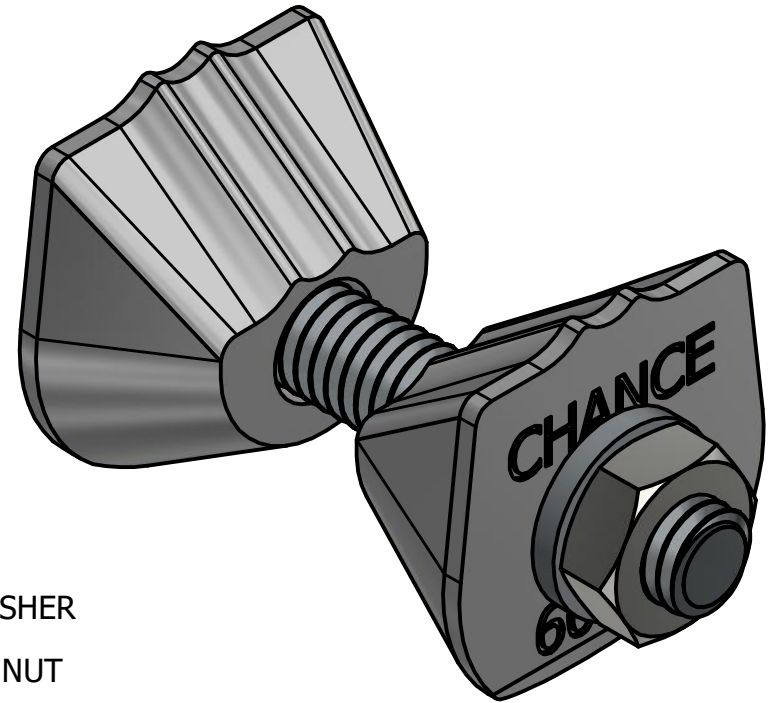


-NOTES-

1. CLAMP MATERIAL: CAST ALUMINUM
HARDWARE MATERIAL: GALVANIZED STEEL.
2. USES 5/16" HARDWARE.
3. FITS 5/8", 3/4", AND 1" DIAMETER TWINEYES.
4. FOR USE IN EXPANDING ANCHORS AND ROCK ANCHORS.



CATALOG NUMBER: G5061

CHANCE[®]

CONFIDENTIAL: THIS DRAWING AND ITS CONTENTS ARE CONFIDENTIAL AND THE EXCLUSIVE PROPERTY OF HUBBELL POWER SYSTEMS. NO PUBLICATION, DISTRIBUTION, OR COPIES MAY BE MADE WITHOUT THE WRITTEN CONSENT OF HUBBELL POWER SYSTEMS. HUBBELL POWER SYSTEMS UNPUBLISHED ALL RIGHTS RESERVED UNDER THE COPYRIGHT LAWS.



HUBBELL POWER SYSTEMS, INC.

TITLE

**TWINEYE
BONDING CLAMP**

SIZE A	CAT / PART / ASSY NO. G5061	DWG NO. SAG5061	REV A
DO NOT SCALE THIS DRAWING	DRN BY HOEK	DATE 11/12/21	SHEET 1 OF 1