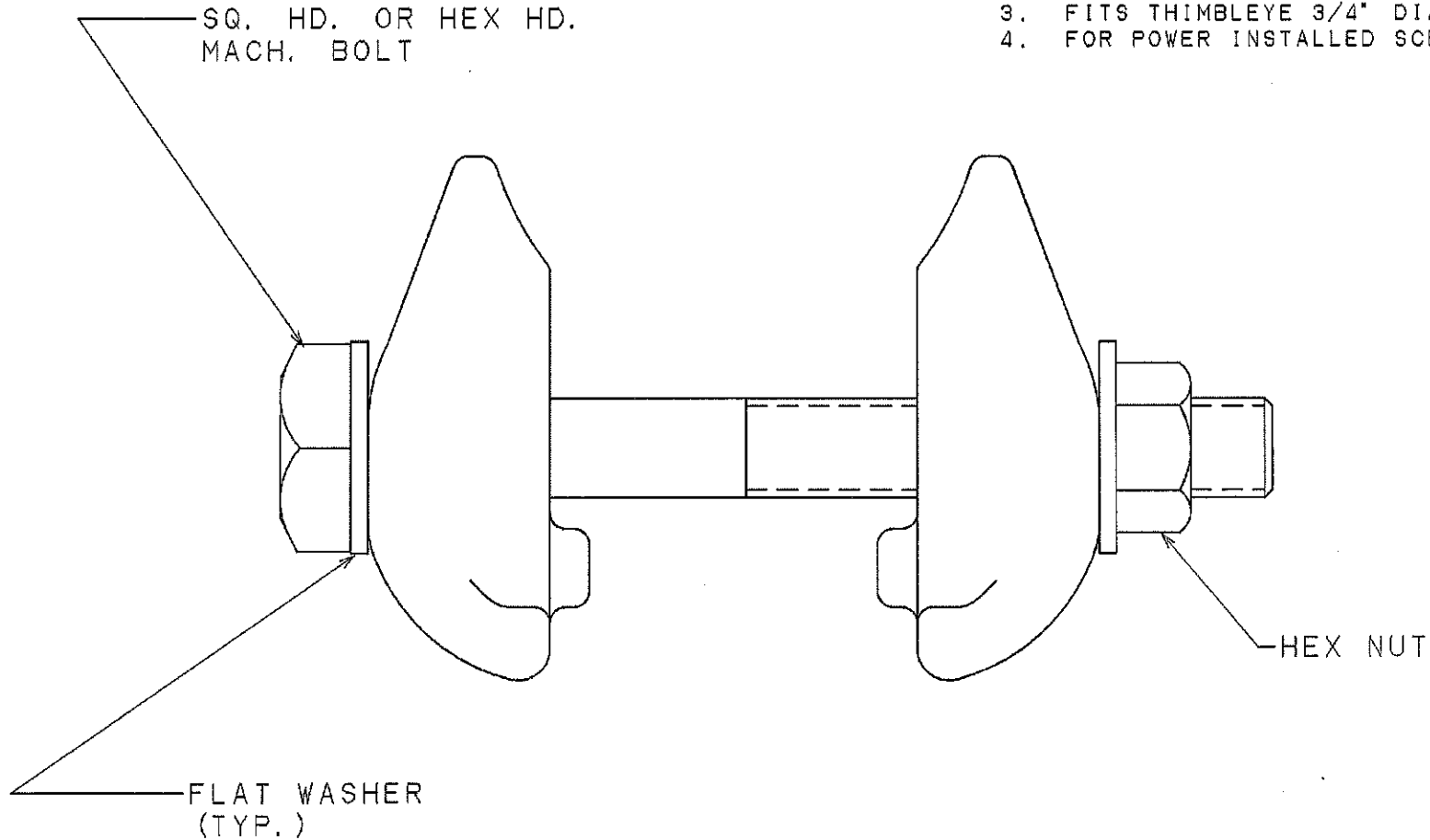





==NOTE==

1. MAT'L: ALUMINUM ALLOY.
2. GALVANIZED STEEL HARDWARE.
3. FITS THIMBLEYE 3/4" DIA. & 1" DIA. ROD.
4. FOR POWER INSTALLED SCREW ANCHORS.



CATALOG NUMBER  
CG5068

LATEST EC NO:		REV.	DATE	CHANGED BY	RESP ENGINEER
EC92102701		-	-----	---	ODOM
					DO NOT SCALE THIS DWG THIRD ANGLE PROJECTION ISO DUAL DIMENSIONING IN=INCH, MM=MILLIMETER
DRN BY:	DATE	TITLE:			
MARTIN	11-04-82	THIMBLEYE BONDING CLAMP			
				DWG NO:  SAG5068	