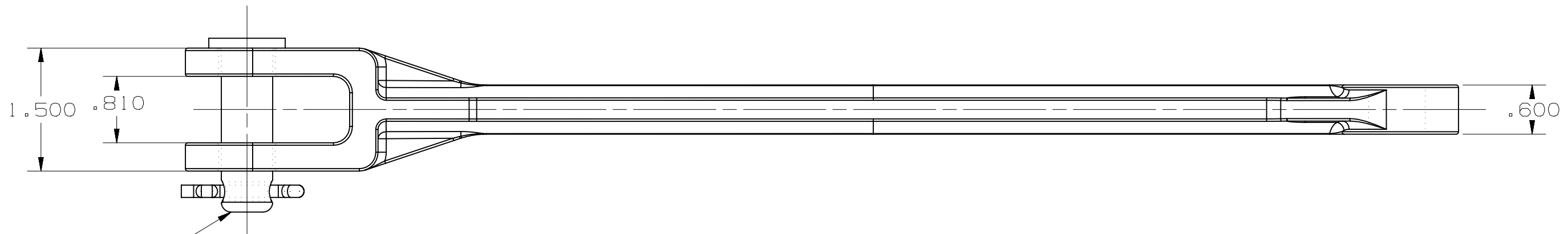
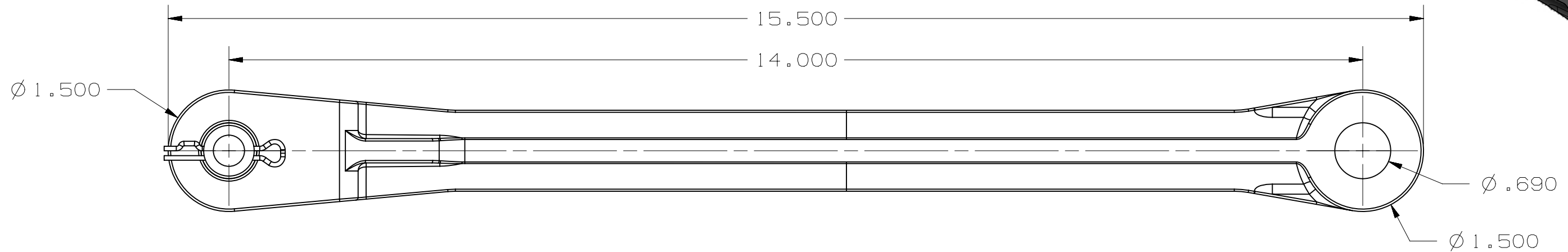


-NOTES-

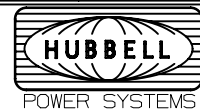
- MATERIAL: DUCTILE IRON PER ASTM A536
HOT DIP GALVANIZED PER ASTM A153



.625 DIA CLEVIS PIN

CATALOG NUMBER L14

LATEST EC NO:	REV.	DATE	CHANGED BY	RESP ENGINEER
62874	B	11/2/15	WITTEN	WITTEN
			DO NOT SCALE THIS DWG	THIRD ANGLE PROJECTION
			ISO DUAL DIMENSIONS IN=INCH, MM=MILLIMETER	
DRN BY:	DATE	TITLE:		SIZE
SCRIVNER	01-27-92	EXTENSION LINK		B



DWG NO:
SAL14

CONFIDENTIAL: THIS DRAWING AND ITS CONTENTS ARE CONFIDENTIAL AND THE EXCLUSIVE PROPERTY OF HUBBELL POWER SYSTEMS, INC. NO PUBLICATION, DISTRIBUTION OR COPIES MAY BE MADE WITHOUT WRITTEN CONSENT BY HUBBELL POWER SYSTEMS, INC. © 2012 HUBBELL POWER SYSTEMS. UNPUBLISHED, ALL RIGHTS RESERVED UNDER THE COPYRIGHT LAWS