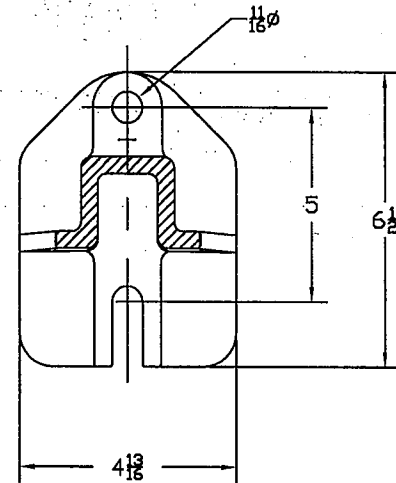
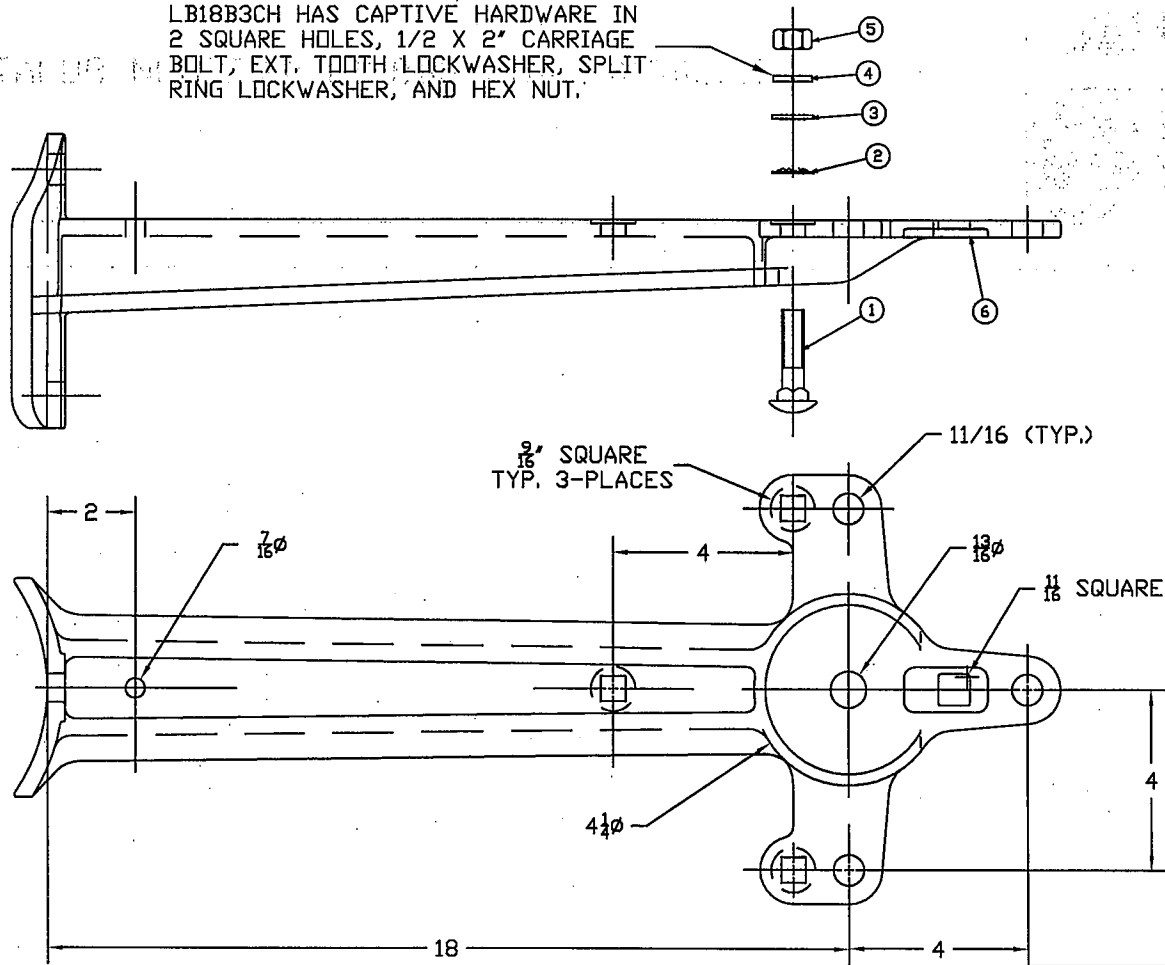


LB18B3CH HAS CAPTIVE HARDWARE IN 2 SQUARE HOLES, 1/2 X 2" CARRIAGE BOLT, EXT. TOOTH LOCKWASHER, SPLIT RING LOCKWASHER, AND HEX NUT.



CATALOG NUMBERS: LB18B3 AND LB18B3CH

CHANCE
TOLERANCE CHART



HUBBELL POWER SYSTEMS

TITLE
VERTICAL INSULATOR
BRACKET

CONFIDENTIAL: THIS DRAWING AND ITS CONTENTS ARE CONFIDENTIAL AND THE EXCLUSIVE PROPERTY OF HUBBELL POWER SYSTEMS. NO PUBLICATION, DISTRIBUTION OR COPIES MAY BE MADE WITHOUT THE WRITTEN CONSENT OF HUBBELL POWER SYSTEMS. HUBBELL POWER SYSTEMS UNPUBLISHED ALL RIGHTS RESERVED UNDER THE COPYRIGHT LAWS.

SIZE	DWG NO.	CAT / PART / ASSY NO.	REV
S.B	SALB18B3	LB18B3/LB18B3CH	A
DO NOT SCALE THIS DRAWING	DRN BY QUALLS	DATE 08/29/94	SHEET 01 OF 01