

SWITCH	WEIGHTS (LBS)			SHIPPING CRATE DIMENSIONS (INCHES)		
	SWITCH	CRATE	TOTAL	LENGTH	WIDTH	HEIGHT
15kV, 600 & 900 AMP, PORCELAIN	60	15	75	28"	12"	25-1/2"
35kV, 600 & 900 AMP, PORCELAIN	70		85			
15kV, 600 & 900 AMP, POLYMER	45		60			

TYPE M3 STATION CLASS SWITCH  
 CATALOG NUMBERING SYSTEM

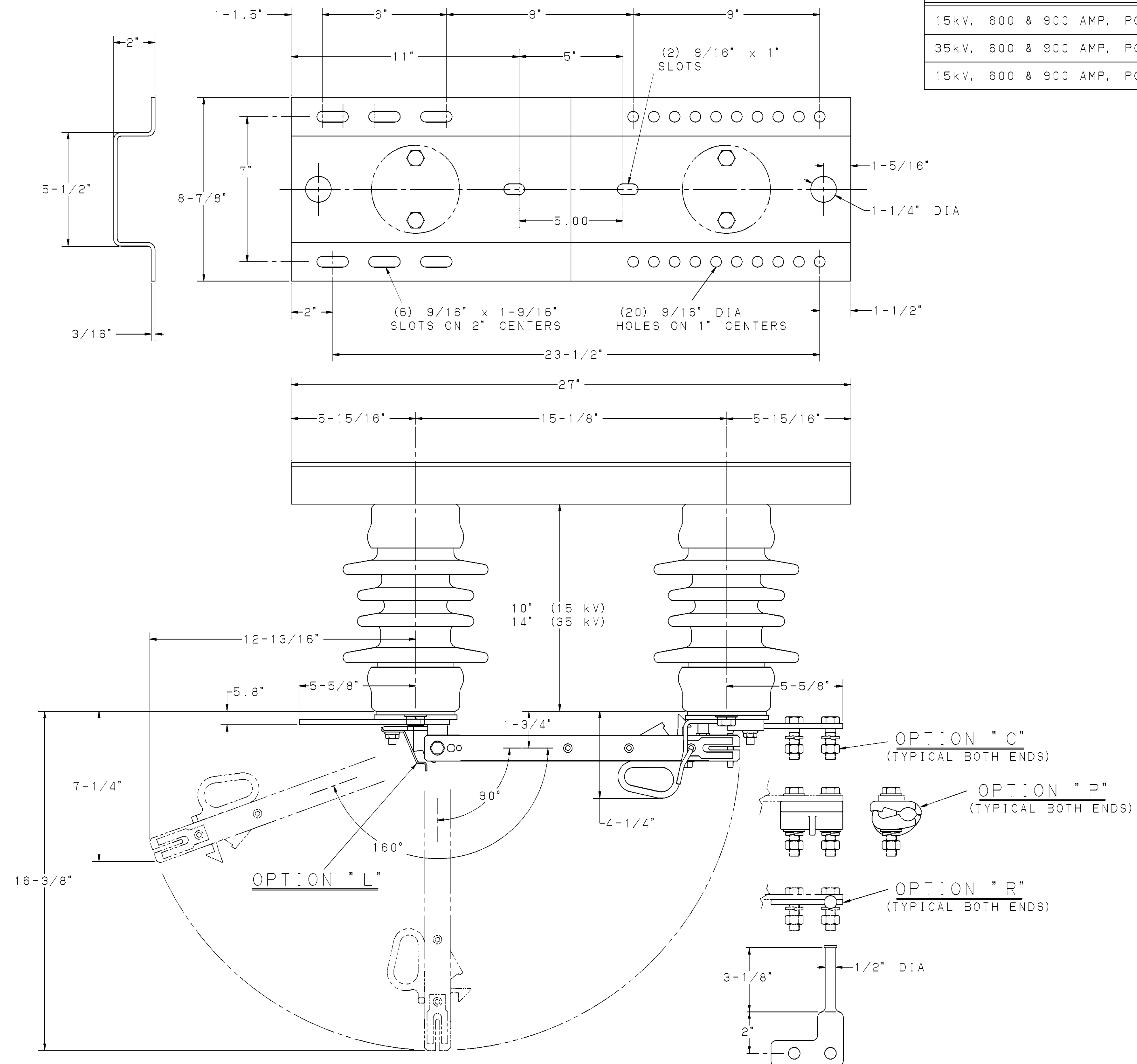
M3S-[[[ ]][[ ]][[ ]][[ ]][[ ]][[ ]]

RATED CURRENT      OPTIONS

6- 600 AMP      C- CAPTIVE HARDWARE  
 9- 900 AMP      L- OPEN POSITION LATCH  
                          P- PARALLEL GROOVE TERMINALS  
                          R- BY-PASS STUDS

INSULATION (3" B.C.)

2 - 15kV 110BIL PORCELAIN  
 4 - 35kV 150BIL PORCELAIN  
 6 - 15kV 110BIL POLYMER



STATION CLASS

-110 kV BIL, 600 & 900 AMP  
 -150 kV BIL, 600 & 900 AMP

LATEST EC NO: 05546	REV. -	DATE -----	CHANGED BY ---	RESP ENGINEER WEAVER
DRN BY: DATE TITLE: TYPE M3 SWITCH ROBERTS 08-15-02				DO NOT SCALE THIS DWG THIRD ANGLE PROJECTION ISO DUAL DIMENSIONS IN=INCH, MM=MILLIMETER
				DVG NO: SA-M3S SIZE D

CONFIDENTIAL: THIS DRAWING AND ITS CONTENTS ARE CONFIDENTIAL AND THE EXCLUSIVE PROPERTY OF HUBBELL / A. B. CHANCE COMPANY. NO PUBLICATION, DISTRIBUTION OR REPRODUCTION IS PERMITTED WITHOUT THE WRITTEN CONSENT OF HUBBELL / A. B. CHANCE COMPANY. © 2002 HUBBELL / A. B. CHANCE. UNPUBLISHED - ALL RIGHTS RESERVED UNDER THE COPYRIGHT LAWS