

CATALOG NUMBERING SYSTEM

POSITION

1 2 3 4 5 6 7 8 9 10 11 12 13
CP 7 3 0 - 1

TP

FOR MOUNTING OR
 FUSEHOLDER ONLY

POSITION 6
 INSULATION
 (110KV BIL)

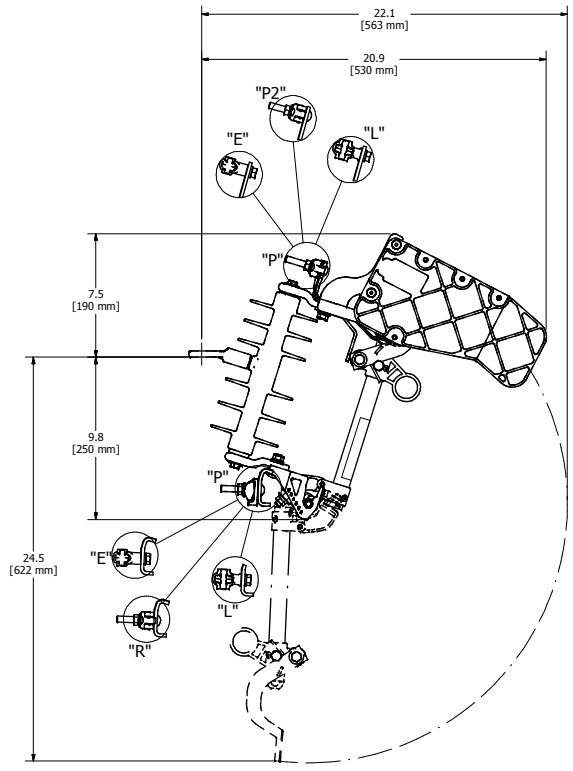
POSITION 11-13
 SPECIAL OPTIONS
 BLANK - NO OPTION
 D - RATING LABEL
 M - MECHANICAL ASSIST FUSEHOLDER

POSITION 10
 MOUNTING BRACKET
 BLANK OR Z - NO BRACKET
 B - NEMA "B" BRACKET
 C - NEMA "B" BRACKET W/6" BOLTS
 X - EXTENDED BRACKET
 D - "D" BRACKET
 V - EASY-ON BRACKET

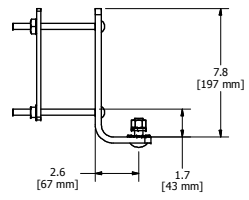
POSITIONS 7 & 8
 FUSEHOLDER

TERMINAL OPTIONS
 P - PG CLAMPS (TIN PLATING)
 P2 - PG CLAMPS 2 PIECE
 E - SMALL EYEBOLT TERMINALS
 L - LARGE EYEBOLT TERMINALS
 R - ROTATED BOTTOM PG
 T - FUSEHODLER ONLY (POSITION 10-11 BLANK)

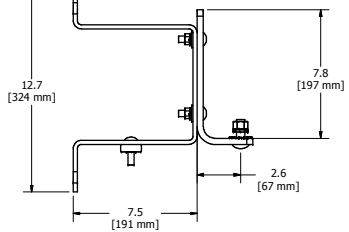
FUSE HOLDER INFORMATION					
POSITIONS 7 & 8	MAX DESIGN KV	RATED AMP	AIC (ASYM)	"L"	ARC ROD
12	15	100	10,000	11.50 (292 MM)	NONE
14	15	100	16,000	11.59 (294 MM)	4.00 IN (102 MM)
43	15	200	12,000	11.59 (294 MM)	3.50 IN (89 MM)
33	15	300	12,000	11.59 (294 MM)	NONE
MM	-	-	-	NO FUSEHOLDER	-



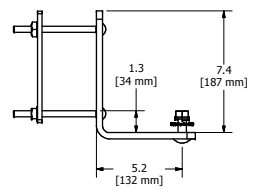
NEMA "B" BRACKET



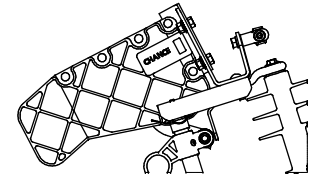
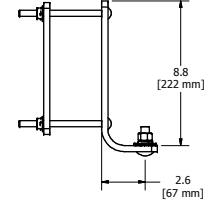
"D" BRACKET



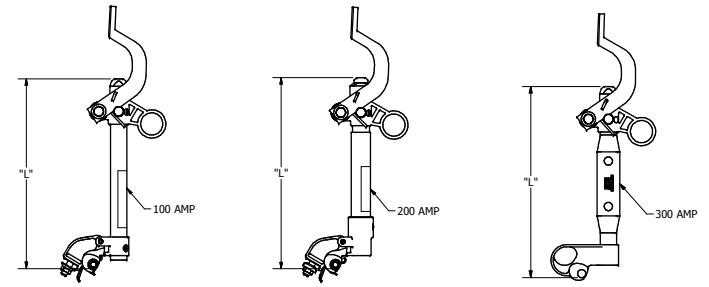
EXTENDED "X" BRACKET



EASY-ON "V" BRACKET



ARC CHUTE DETAIL
 FOR "E", "L" AND "P2" CUTOUTS
 SCALE 1 / 4



DIMENSION ARE APPROXIMATE
 AND FOR REFERENCE ONLY

CONFIDENTIAL

CHANCE EC 70598 SR DATE: 08-04-17		HUBBELL POWER SYSTEMS	
CONFIDENTIAL: THIS DRAWING AND ITS CONTENTS ARE CONFIDENTIAL AND THE EXCLUSIVE PROPERTY OF HUBBELL POWER SYSTEMS. NO PUBLICATION, DISTRIBUTION OR COPIES MAY BE MADE WITHOUT THE WRITTEN CONSENT OF HUBBELL POWER SYSTEMS. HUBBELL POWER SYSTEMS UNPUBLISHED ALL RIGHTS RESERVED UNDER THE COPYRIGHT LAWS.		TITLE CUTOUT, LDBK 15 KV 110 BIL POLYMER	
SIZE D	DWG NO. SAP730-1	CAT / PART / ASSY NO. SEE CHART	REV C
DO NOT SCALE THIS DRAWING	DRN BY COCHRAN	DATE 01-21-15	SHEET 01 OF 01