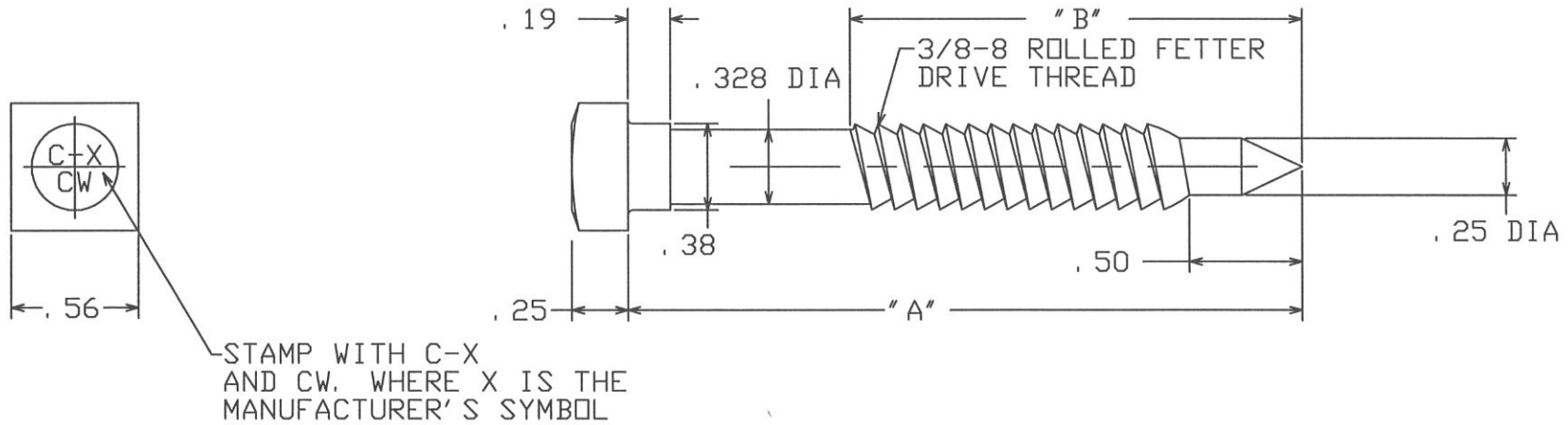



=NOTES=

1. MATERIAL: STEEL CONFORMING TO THE FOLLOWING PROPERTIES:
 - AVERAGE MINIMUM ABSORPTION OF 20J WHEN TESTED AT -20°C PER ASTM A370.
 - MINIMUM BOLT STRENGTH CLASS 4.6 PER ASTM F568M.
 - MUST BE GALVANIZABLE (SILICON 0 -.04 OR .15%-.25%).
2. ZINC COATING: HOT DIP GALVANIZE PER CSA G164M (LATEST REVISION).



PART NO.	"A"	"B"
PS508743CW	3.0	2.0
PS508744CW	4.0	3.0

CHANCE TOLERANCE CHART		 HUBBELL POWER SYSTEMS POWER SYSTEMS, INC.	
CONFIDENTIAL: THIS DRAWING AND ITS CONTENTS ARE CONFIDENTIAL AND THE EXCLUSIVE PROPERTY OF HUBBELL POWER SYSTEMS. NO PUBLICATION, DISTRIBUTION OR COPIES MAY BE MADE WITHOUT THE WRITTEN CONSENT OF HUBBELL POWER SYSTEMS. HUBBELL POWER SYSTEMS UNPUBLISHED ALL RIGHTS RESERVED UNDER THE COPYRIGHT LAWS.		TITLE FETTER DRIVE LAG SCREW (COLD WEATHER)	
SIZE	DWG NO.	CAT / PART / ASSY NO.	REV
SB	SAPS508743CW	SEE CHART	---
DO NOT SCALE THIS DRAWING	DRN BY BERGER	DATE 12/03/12	SHEET 01 OF 01