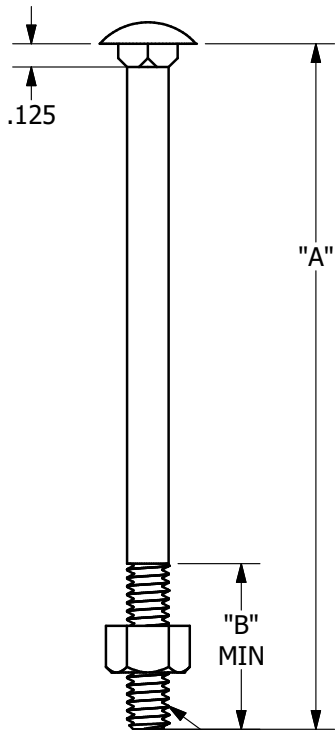


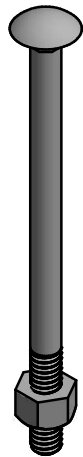
"C" DIA  
 BOLT HEADS WILL HAVE  
 MANUFACTURER'S ID MARK  
 AND A "CW" MARK FOR COLD  
 WEATHER APPROVED.



1/4-20 UNC-2A  
 THREAD

==NOTES==

1. BOLT MAT'L: STEEL CONFORMING TO THE FOLLOWING PROPERTIES:  
 -AVERAGE MINIMUM ABSORPTION OF 20J WHEN TESTED AT -20°C PER ASTM A370.  
 -MINIMUM BOLT STRENGTH PER CLASS 4.6 PER ASTM F568M.  
 -UNTHREADED PORTION MUST BE CAPABLE OF BEING BENT(COLD) AROUND A MANDREL  
 WITHOUT CRACKING. MANDREL SIZE IS TO BE TWO TIMES THE DIAMETER OF THE SHANK  
 BEING TESTED.
2. ZINC COATING: HOT DIP GALVANIZE PER CSA 6-164M (LATEST REVISION).
3. NUT DIMENSIONS PER ASME/ANSI B18. 2. 2. NUT MATERIAL  
 SAME AS BOLT MATERIAL.



CATALOG NUMBER	"A"	"B"	"C"
PS8421CW	1	1	0.58
PS8422CW	2	2	0.58
PS842212CW	2.5	2.5	0.58

<p><b>CHANCE</b>®</p> <p><small>CONFIDENTIAL: THIS DRAWING AND ITS CONTENTS ARE CONFIDENTIAL AND THE EXCLUSIVE PROPERTY OF HUBBELL POWER SYSTEMS. NO PUBLICATION, DISTRIBUTION, OR COPIES MAY BE MADE WITHOUT THE WRITTEN CONSENT OF HUBBELL POWER SYSTEMS, HUBBELL POWER SYSTEMS UNPUBLISHED ALL RIGHTS RESERVED UNDER THE COPYRIGHT LAWS.</small></p>	<p>HUBBELL POWER SYSTEMS, INC.</p>		
	<p>TITLE</p> <p><b>1/4" CARRIAGE BOLT (COLD WEATHER)</b></p>		
DO NOT SCALE THIS DRAWING	SIZE <b>B</b>	CAT / PART / ASSY NO. <b>SEE CHART</b>	DRN BY RN
DWG NO. <b>SAPS8421CW</b>	DATE 1/24/2023	REV <b>A</b>	SHEET 1 OF 1