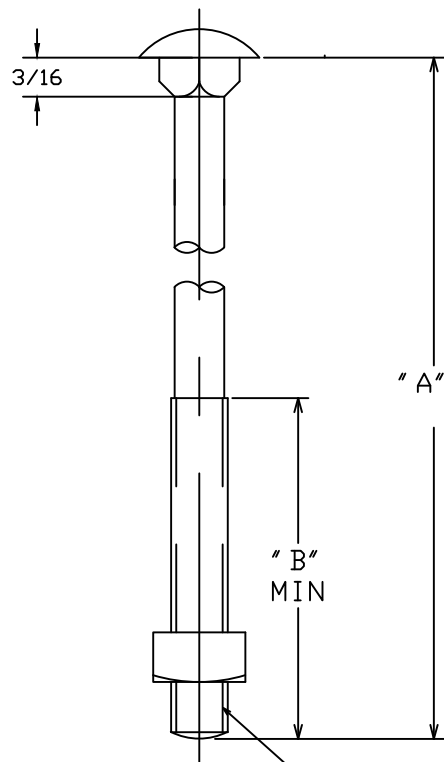


BOLT HEADS WILL HAVE
MANUFACTURER'S ID MARK
AND A "CW" MARK FOR
COLD WEATHER APPROVED.



3/8-16UNC-2A
THREAD

CATALOG NUMBER	"A"	"B"	"C"
PS8632CW	2	1.5	0.81
PS8633CW	3	1.5	0.81
PS8634CW	4	3	0.81
PS863412CW	4.5	3	0.81
PS8635CW	5	3	0.81
PS8636CW	6	3	0.81
PS8637CW	7	4	0.81
PS8638CW	8	4	0.81

==NOTES==

- BOLT MAT'L: STEEL CONFORMING TO THE FOLLOWING PROPERTIES:
 - AVERAGE MINIMUM ABSORPTION OF 20J WHEN TESTED AT -20°C PER ASTM A370.
 - MINIMUM BOLT STRENGTH PER CLASS 4.6 PER ASTM F568M.
 - UNTHREADED PORTION MUST BE CAPABLE OF BEING BENT(COLD) AROUND A MANDREL WITHOUT CRACKING. MANDREL SIZE IS TO BE TWO TIMES THE DIAMETER OF THE SHANK BEING TESTED.
- ZINC COATING:
HOT DIP GALVANIZE PER CSA 6-164M - (LATEST REVISION).
- NUT DIMENSIONS PER ASME/ANSI B18.2.2. NUT MATERIAL SAME AS BOLT MATERIAL.

CHANCE TOLERANCE CHART		HUBBELL POWER SYSTEMS <small>POWER SYSTEM, INC.</small>	
<small>CONFIDENTIAL: THIS DRAWING AND ITS CONTENTS ARE CONFIDENTIAL AND THE EXCLUSIVE PROPERTY OF HUBBELL POWER SYSTEMS. NO PUBLICATION, DISTRIBUTION OR COPIES MAY BE MADE WITHOUT THE WRITTEN CONSENT OF HUBBELL POWER SYSTEMS. HUBBELL POWER SYSTEMS UNPUBLISHED. ALL RIGHTS RESERVED UNDER THE COPYRIGHT LAWS.</small>			
TITLE 3/8" CARRIAGE BOLT (COLD WEATHER)		SIZE SB SAPS8634CW	CAT / PART / ASSY NO. SEE CHART REV --
DO NOT SCALE THIS DRAWING	DRN BY JJL	DATE 01/07/13	SHEET 01 OF 01