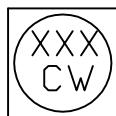
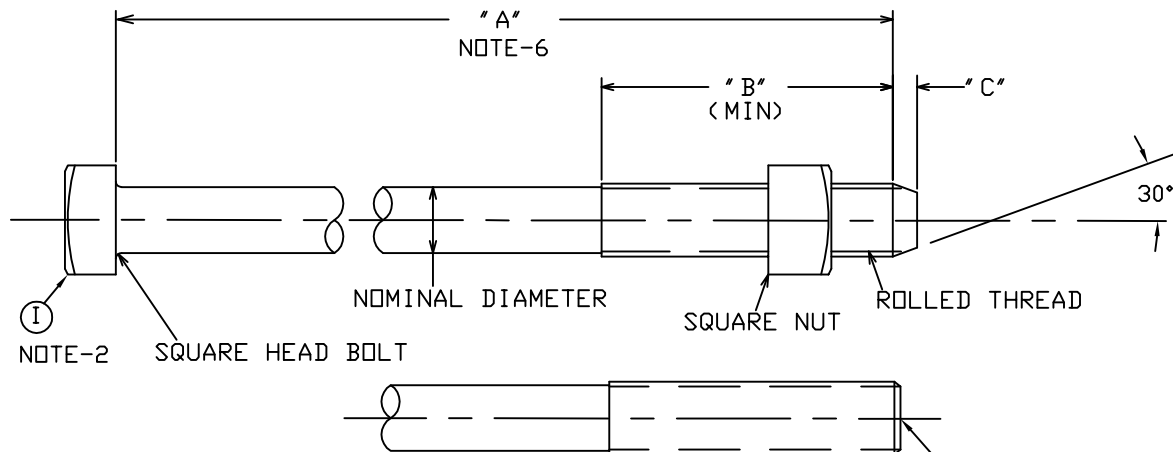


BOLT HEADS WILL HAVE MANUFACTURERS ID MARK ON HEAD AND A "CW" MARK FOR COLD WEATHER APPROVED BOLT



Catalog #	Description	Nominal Dia	Thread	A	B	C
PS870112CW	Bolt, machine, 1/2" x 1-1/2"	1/2"	1/2"-13 UNC-2A	1.5	1.5	--
PS8703CW	Bolt, machine, 1/2" x 3"	1/2"	1/2"-13 UNC-2A	3	3	--
PS870412CW	Bolt, machine, 1/2" x 4-1/2"	1/2"	1/2"-13 UNC-2A	4.5	3	--
PS870512CW	Bolt, machine, 1/2" x 5-1/2"	1/2"	1/2"-13 UNC-2A	5.5	3	--
PS8706CW	Bolt, machine, 1/2" x 6"	1/2"	1/2"-13 UNC-2A	6	3	--
PS8707CW	Bolt, machine, 1/2" x 7"	1/2"	1/2"-13 UNC-2A	7	4	0.18
PS8708CW	Bolt, machine, 1/2" x 8"	1/2"	1/2"-13 UNC-2A	8	4	0.18
PS8709CW	Bolt, machine, 1/2" x 9"	1/2"	1/2"-13 UNC-2A	9	4	0.18
PS8710CW	Bolt, machine, 1/2" x 10"	1/2"	1/2"-13 UNC-2A	10	4	0.18
PS8712CW	Bolt, machine, 1/2" x 12"	1/2"	1/2"-13 UNC-2A	12	6	0.18
PS8714CW	Bolt, machine, 1/2" x 14"	1/2"	1/2"-13 UNC-2A	14	6	0.18
PS8805CW	Bolt, machine, 5/8" x 5"	5/8"	5/8"-11 UNC-2A	5	3	--
PS8806CW	Bolt, machine, 5/8" x 6"	5/8"	5/8"-11 UNC-2A	6	3	--
PS8807CW	Bolt, machine, 5/8" x 7"	5/8"	5/8"-11 UNC-2A	7	4	0.25
PS8808CW	Bolt, machine, 5/8" x 8"	5/8"	5/8"-11 UNC-2A	8	4	0.25
PS8809CW	Bolt, machine, 5/8" x 9"	5/8"	5/8"-11 UNC-2A	9	6	0.25
PS8810CW	Bolt, machine, 5/8" x 10"	5/8"	5/8"-11 UNC-2A	10	6	0.25
PS8812CW	Bolt, machine, 5/8" x 12"	5/8"	5/8"-11 UNC-2A	12	6	0.25
PS8814CW	Bolt, machine, 5/8" x 14"	5/8"	5/8"-11 UNC-2A	14	6	0.25
PS8816CW	Bolt, machine, 5/8" x 16"	5/8"	5/8"-11 UNC-2A	16	6	0.25
PS8818CW	Bolt, machine, 5/8" x 18"	5/8"	5/8"-11 UNC-2A	18	6	0.25
PS8820CW	Bolt, machine, 5/8" x 20"	5/8"	5/8"-11 UNC-2A	20	6	0.25
PS8822CW	Bolt, machine, 5/8" x 22"	5/8"	5/8"-11 UNC-2A	22	6	0.25
PS8824CW	Bolt, machine, 5/8" x 24"	5/8"	5/8"-11 UNC-2A	24	6	0.25
PS8826CW	Bolt, machine, 5/8" x 26"	5/8"	5/8"-11 UNC-2A	26	6	0.25
PS8828CW	Bolt, machine, 5/8" x 28"	5/8"	5/8"-11 UNC-2A	28	6	0.25
PS89C2CW	Bolt, machine, 3/4" x 2"	3/4"	3/4"-10 UNC-2A	2	1 3/8	--
PS890212CW	Bolt, machine, 3/4" x 2 1/2"	3/4"	3/4"-10 UNC-2A	2.5	1 3/8	--
PS8908CW	Bolt, machine, 3/4" x 6"	3/4"	3/4"-10 UNC-2A	6	3	--
PS8907CW	Bolt, machine, 3/4" x 7"	3/4"	3/4"-10 UNC-2A	7	4	--
PS8908CW	Bolt, machine, 3/4" x 8"	3/4"	3/4"-10 UNC-2A	8	4	--
PS8910CW	Bolt, machine, 3/4" x 10"	3/4"	3/4"-10 UNC-2A	10	6	0.25
PS8912CW	Bolt, machine, 3/4" x 12"	3/4"	3/4"-10 UNC-2A	12	6	0.25
PS8914CW	Bolt, machine, 3/4" x 14"	3/4"	3/4"-10 UNC-2A	14	6	0.25
PS8916CW	Bolt, machine, 3/4" x 16"	3/4"	3/4"-10 UNC-2A	16	6	0.25
PS8918CW	Bolt, machine, 3/4" x 18"	3/4"	3/4"-10 UNC-2A	18	6	0.25
PS8920CW	Bolt, machine, 3/4" x 20"	3/4"	3/4"-10 UNC-2A	20	6	0.25
PS8922CW	Bolt, machine, 3/4" x 22"	3/4"	3/4"-10 UNC-2A	22	6	0.25
PS8924CW	Bolt, machine, 3/4" x 24"	3/4"	3/4"-10 UNC-2A	24	6	0.25
PS8926CW	Bolt, machine, 3/4" x 26"	3/4"	3/4"-10 UNC-2A	26	6	0.25
PS8928CW	Bolt, machine, 3/4" x 28"	3/4"	3/4"-10 UNC-2A	28	6	0.25
PS8930CW	Bolt, machine, 3/4" x 30"	3/4"	3/4"-10 UNC-2A	30	6	0.25



-NOTES-

- HOT DIP GALVANIZED PER CSA G164-M.
- BOLT MATERIAL: STEEL CONFORMING TO THE FOLLOWING PROPERTIES:
 - AVERAGE MINIMUM ENERGY ABSORPTION OF 20J WHEN TESTED AT -20°C PER ASTM A370 (CHARPY IMPACT).
 - MINIMUM BOLT BREAKING STRENGTH WHEN TESTED PER ASTM F606 OF
 - 7575 LBS (33.7 kN) FOR 1/2" BOLTS
 - 14100 LBS (62.8 kN) FOR 5/8" BOLTS
 - 22000 LBS (98 kN) FOR 3/4" BOLTS
 - UNTHREADED PORTION CAPABLE OF BEING BENT (COLD) AROUND A MANDREL WITHOUT CRACKING
 - BOLT HEAD MUST WITHSTAND AN IMPACT BLOW AT A TEMPERATURE OF -20° C OR BELOW, PRODUCING A PERMANENT DEFORMATION OF 5° RELATIVE TO THE BOLT AXIS WITHOUT ANY CRACKING OCCURRING.
 - CHEMICAL COMPOSITION PER CSA C83 (LATEST REVISION).
- NUT DIMENSIONS PER ASME/ANSI B18.2.2. NUT MATERIAL SAME AS BOLT MATERIAL. NUTS TAPPED AFTER GALVANIZING.
- 1/2" & 5/8" BOLTS 6' LONG AND UNDER SHALL BE AS SHOWN IN ASME B18.2.1. (LIMITED OR NO CHAMFER). 3/4" BOLTS 8' LONG AND UNDER SHALL BE AS SHOWN IN ASME B18.2.1. (LIMITED OR NO CHAMFER)
- AS A GENERAL RULE ALL BOLTS UNDER 10' IN LENGTH ARE COLD HEADED. ALL BOLTS 10' AND ABOVE IN LENGTH ARE HOT HEADED. HOWEVER, THE MANUFACTURER RETAINS THE RIGHT TO FREELY INTERCHANGE HOT HEADING WITH COLD HEADING OR VICE VERSA.
- ALL BOLTS WILL MEET CSA C83.26 WITH THE FOLLOWING EXCEPTIONS:
 - ALL BOLT LENGTHS DO NOT INCLUDE THE CHAMFER.
 - THE BOLT LENGTH TOLERANCE IS +/- .25' FOR ALL BOLTS 8' AND OVER.
 - THE BOLT LENGTH TOLERANCE IS +.25' / -.10' FOR ALL BOLTS UNDER 8'.

SEE NOTE-4

<p>CHANCE TOLERANCE CHART</p>		<p>HUBBELL POWER SYSTEMS POWER SYSTEMS, INC.</p>	
<p>CONFIDENTIAL: THIS DRAWING AND ITS CONTENTS ARE CONFIDENTIAL AND THE EXCLUSIVE PROPERTY OF HUBBELL POWER SYSTEMS. NO PUBLICATION, DISTRIBUTION OR COPIES MAY BE MADE WITHOUT THE WRITTEN CONSENT OF HUBBELL POWER SYSTEMS. HUBBELL POWER SYSTEMS UNPUBLISHED ALL RIGHTS RESERVED UNDER THE COPYRIGHT LAWS.</p>			
<p>TITLE</p> <p>BOLTS, MACHINE (COLD WEATHER CSA)</p>		<p>SIZE DWG NO. CAT / PART / ASSY NO. REV</p> <p>SB SAPS8908CW SEE CHART G</p>	
<p>DO NOT SCALE THIS DRAWING</p>	<p>DRN BY WDK</p>	<p>DATE 09/11/06</p>	<p>SHEET 1 OF 1</p>