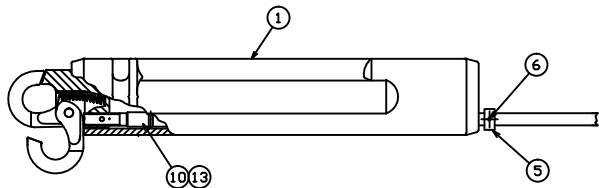
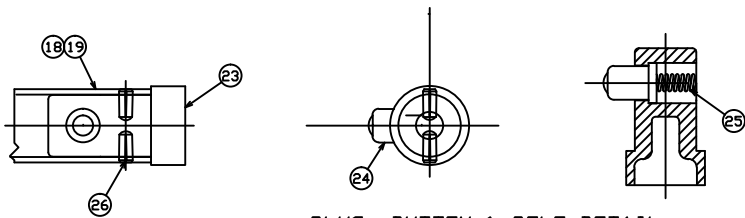


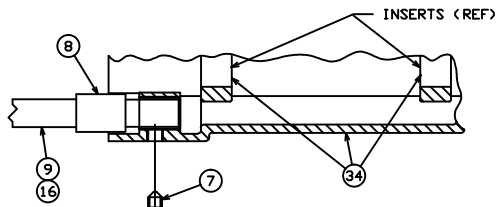
SEE HEAD & JAW DETAIL



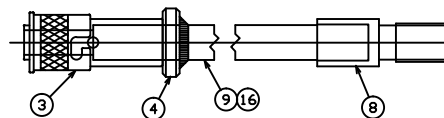
HEAD & JAW DETAIL



PLUG, BUTTON & POLE DETAIL



ADJUSTMENT DETAIL



OPERATING TUBE DETAIL

PART NUMBER ITEM PART DESCRIPTION

PSP4033483P	1	GRIPALL FERRULE	1	1
P403-1522P	3	COUPLING	1	1
P403-1906P	4	PLASTIC SPACER	1	1
P403-1134P	5	COLLAR	1	1
P001-0684P	6	ROLL PIN, 3/32 DIA X .63	1	1
P001-0255P	7	SET SCREW-1/4 X 3/16	1	1
P403-1117P	8	ADAPTER	1	1
P403-1040P	9	OPERATING TUBE	1	1
E403-2768P	10	OPERATING ROD ASSY.	1	1
E403-2769P	13	OPERATING ROD ASSY.	1	1
P403-1014P	14	BOTTOM CAP	1	1
P001-0309P	15	SELF TAPPING SCR, #8-32	2	2
P403-1041P	16	OPERATING TUBE	1	1
P403-1055P	18	POLE	1	1
P403-1056P	19	POLE	1	1
E403-1576P	20	LOCKBAR TUBE ASSY.	1	1
E403-1577P	21	LOCKBAR TUBE ASSY.	1	1
P403-1007P	23	PLUG	1	1
P403-3002P	24	BUTTON	1	1
P403-2351P	25	SPRING, 1.25 LONG	1	1
P001-0419P	26	PIN, .187 DIA X .375 LG	2	2
P403-1315P	28	HANDLE STOP	1	1
O69118P	31	HANGER	1	1
P001-0742P	32	HOSE CLAMP	1	1
E403-1582P	34	HANDLE ASSY	1	1

C403-1035

C403-1036



HUBBELL POWER SYSTEMS

TITLE

TELESCOPING
GRIPALL

CONFIDENTIAL: THIS DRAWING AND ITS CONTENTS ARE CONFIDENTIAL AND THE EXCLUSIVE PROPERTY OF HUBBELL POWER SYSTEMS. NO PUBLICATION, DISTRIBUTION OR COPIES MAY BE MADE WITHOUT THE WRITTEN CONSENT OF HUBBELL POWER SYSTEMS. HUBBELL POWER SYSTEMS UNPUBLISHED ALL RIGHTS RESERVED UNDER THE COPYRIGHT LAWS.

SIZE	DWG NO.	CAT / PART / ASSY NO.	REV
D	SAC403-1035	SEE CHART	--
DO NOT SCALE THIS DRAWING	DRN BY RAM	DATE 5/3/13	SHEET 1 OF 1