

EXAMPLE CATALOG NUMBER

GS 30 012 CC2 SC

(SML) LOAD RATING

ADD SC AT END FOR SILICONE COATED ROD

LENGTH BETWEEN END FITTINGS PER TABLE "A" INCHES

END FITTINGS PER SUFFIX TABLE

END FITTING SUFFIX TABLE		
SUFFIX	END 1	END 2
CC	CLEVIS	CLEVIS
CC1	CLEVIS	CLEVIS + ROLLER
CC2	CLEVIS + ROLLER	CLEVIS + ROLLER

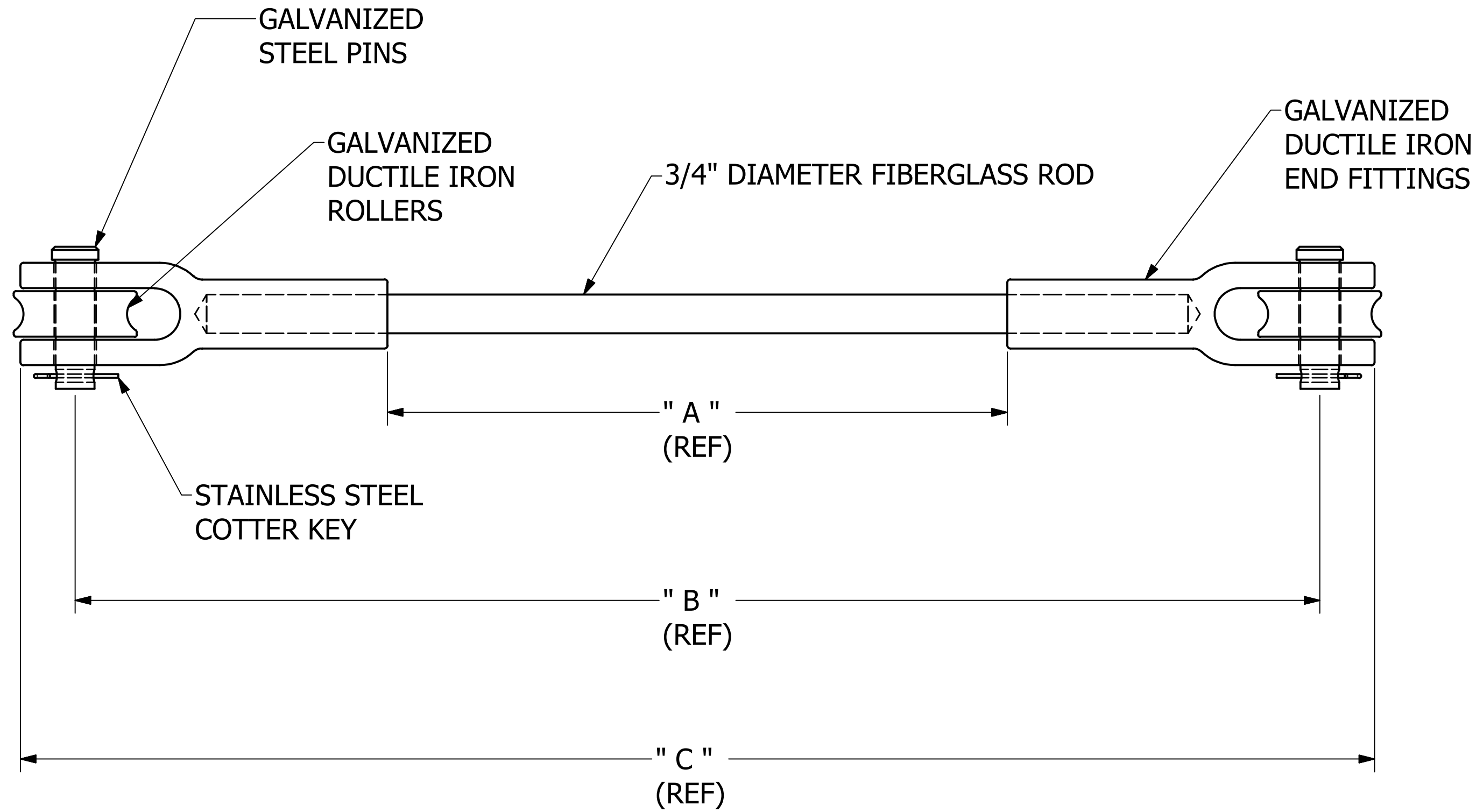


TABLE		
" A "	" B "	" C "
012	24	26.2
018	30	32.2
024	36	38.2
030	42	44.2
036	48	50.2
042	54	56.2
048	60	62.2
054	66	68.2
060	72	74.2
072	84	86.2
078	90	92.2
084	96	98.2
090	102	104.2
096	108	110.2
108	120	122.2
120	132	134.2
144	156	158.2

THIS SYMBOL IDENTIFIES CRITICAL FEATURES

CHANCE®		HUBBELL POWER SYSTEMS, INC.	
TITLE 30K GUY STRAIN			
SIZE C	CAT / PART / ASSY NO. SEE CHARTS	DWG NO. GS30xxxCCx	REV -
DO NOT SCALE THIS DRAWING	DRN BY RAM	DATE 8/24/17	SHEET 1 OF 1

CONFIDENTIAL: THIS DRAWING AND ITS CONTENTS ARE CONFIDENTIAL AND THE EXCLUSIVE PROPERTY OF HUBBELL POWER SYSTEMS. NO PUBLICATION, DISTRIBUTION, OR COPIES MAY BE MADE WITHOUT THE WRITTEN CONSENT OF HUBBELL POWER SYSTEMS. HUBBELL POWER SYSTEMS UNPUBLISHED ALL RIGHTS RESERVED UNDER THE COPYRIGHT LAWS.