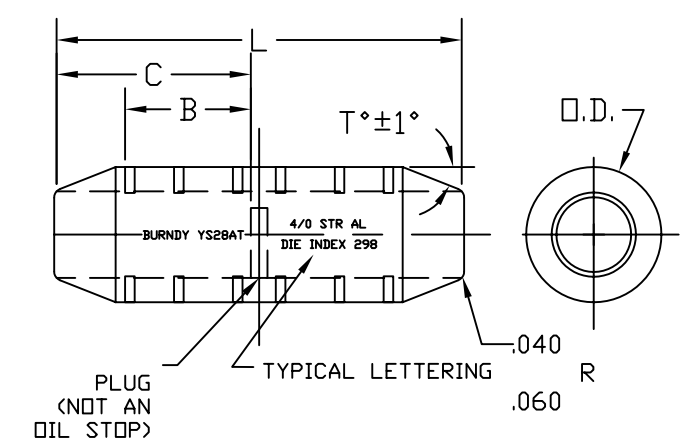


CONDUCTOR							INSTALLATION DATA						T°	
CAT NO.	ALUMINUM CABLE SIZE	STR.	B	C	L	O.D.	TOOL INDEX NO.	Y34A HYPRESS		Y35 HYPRESS		Y48B HYPRESS		
								DIE SET CAT NO.	CRIMPS PER END.	DIE SET CAT NO.	CRIMPS PER END.	DIE SET CAT NO.		CRIMPS PER END.
YS6CAT	#6 (.184)	7	1.07	1.25	2.65	.34	346	A6CAB	2	U6CABT	2			
YS4CAT	#4 (.232)	7	1.59	1.84	3.83	.43	375	A4CAB	2	U4CABT	2	C4CAB	2	
YS2CAT	#2 (.292)	7	1.58	1.93	4.00	.53	348	A2CAB	2	U2CABT	2			
YS1CAT	#1 (.328)	7	1.64	1.92	4.00	.54	471	A1CAR	2	U1CART	2			
YS25AT	1/0 (.373)	19	1.96	2.29	4.73	.60	296	A25AR	2	U25ART	2			
YS26AT	2/0 (.418)	19	1.83	2.04	4.29	.67	297	A26AR	3	U26ART	3			
YS27AT	3/0 (.470)	19	2.04	2.27	4.69	.76	467	A27AR	3	U27ART	3	C27AR	△	
YS28AT	4/0 (.528)	19	2.16	2.42	5.05	.85	298	A28AR	3	U28ART	3	C28AR	△	
YS29AT	250 kcmil (.575)	37	2.29	2.58	5.37	.92	324	A29AR	3	U29ART	3	C29AR	△	
YS30AT	300 kcmil (.630)	37	2.54	2.85	5.91	1.01	470	A30AR	3	U30ART	3	C30AR	△	
YS31AT	350 kcmil (.681)	37	2.68	3.01	6.23	1.11	299			U31ART	3	C31AR	△	
YS32AT	400 kcmil (.728)	37	3.00	3.37	6.95	1.19	472			U32ART	6	C32AR	3	
YS34AT	500 kcmil (.813)	37	3.39	3.79	7.79	1.32	300 705			U34ART U705	6 3	C34AR	3	
YS36AT	600 kcmil (.893)	61	3.30	3.75	7.71	1.44	473					C36AR	3	
YS39AT	700 kcmil (.964)	61	3.69	4.18	8.57	1.60	301					C39AR	3	
	750 kcmil (.998)	61												
YS40AT	800 kcmil (1.031)	61	3.77	4.30	8.81	1.65	474					C40AR	3	
YS44AT	1000 kcmil (1.152)	61	3.77	4.74	9.69	1.84	302					C44AR	3	
YS45AT	1250 kcmil (1.289)	91	4.00	4.50	9.12	1.84	302					C44AR	3	
YS46AT	1500 kcmil (1.412)	91	5.01	5.72	11.65	2.26	478					△	3	
YS48AT	2000 kcmil (1.631)	117	4.83	5.61	11.43	2.60	479					△	3	
YS483AT	2250 kcmil (1.731)	127	4.83	5.51	11.23	2.60	479					△	3	
YS75AT	1/0 (.325) S0L	1	2.91	3.17	6.55	.65	243 BG5/8-1	A-243	3	U243	3	C243	△	
YS48ATG3	2000 kcmil (1.625)	127	6.99	7.98	16.10	2.60	479					△	4	

REV.	DATE	DESCRIPTION	ECO	BY	C'K'D.
C	4/29/08	REVERSE TUBE REDUCTION CHNG	15553	PL	PL



NOTES:

- 1. INSTALL WITH Y486RB HYPRESS USING F46AR DIE SET. MAKE 3 CRIMPS PER END.
- 2. INSTALL WITH Y486RB HYPRESS USING F48AR DIE SET. MAKE 3 CRIMPS PER END.
- 3. WHEN CABLE USED IS 90° OR 120° COMPACT, OR NON-COMPACTED SECTOR CABLE, THE CABLE MUST BE ROUNDED BY MEANS OF ROUNDING DIES AS SHOWN ON DWG. SD14376 BEFORE INSERTING INTO HYLINK.
- 4. USE ALSO MD6 HYTOOL, WITH "BG" FIXED GROOVE. 10 CRIMPS PER END.
- 5. CONNECTOR SUPPLIED PREFILLED WITH PENETROX THAT IS COMPATIBLE WITH THE CABLE INSULATION. REMOVE ALL EXCESS PENETROX FROM CONNECTOR AND ADJACENT CONDUCTOR INSULATION AFTER COMPLETION OF INSTALLATION, OR PRIOR TO TAPING.
- 6. CAN BE INSTALLED WITH Y45L HYPRESS. INDEX #301 - USE S39ART DIE - 6 CRIMPS
- 7. 2 CRIMPS OVERLAPPED
- 8. CAN BE INSTALLED WITH Y45L HYPRESS USING 'U' DIES IN 'U' DIE ADAPTOR.

ANY CHANGE ON THIS DWG.
MAY AFFECT DWG. NO. SC68659
REFERENCE: FD71776 'EEI' TAPER
FINISH: TIN PLATED
MATERIAL: ALUMINUM TUBE

TO ORDER BURNDY® PRODUCTS CALL		TAPERED HYLINK™ (ALUMINUM)	
UNITED STATES: 1-800-346-4175 (LONDONDERRY, NH)		ITEM NO: N/A	
CANADA: 1-800-361-6975 (QUEBEC) 1-800-387-6487 (ALL OTHER PROVINCES)		CAT NO: YS-AT (TABLE)	
FOR PRODUCT INFO: http://www.burndy.com		SCALE: N/A	
		DRAWN BY: NP. 1/17/52	
		CHECKER: CS. 2/18/52	
		DSN APPVL: MG. 4/23/64	
		MFG APPVL: --	
		QC APPVL: --	
		MKT APPVL: --	
		PROJ FAM: --	
		PROJECT #: --	
		DOCUMENT TYPE: Sales	
		REL LEVEL: AutoCAD	
		DRAWING NO: SC025626-01	REV: C
		SIZE: C	SHEET 1 OF 1