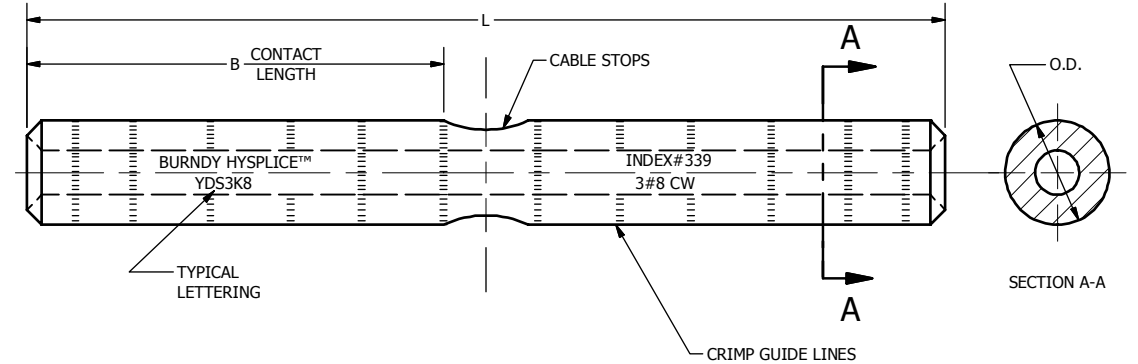


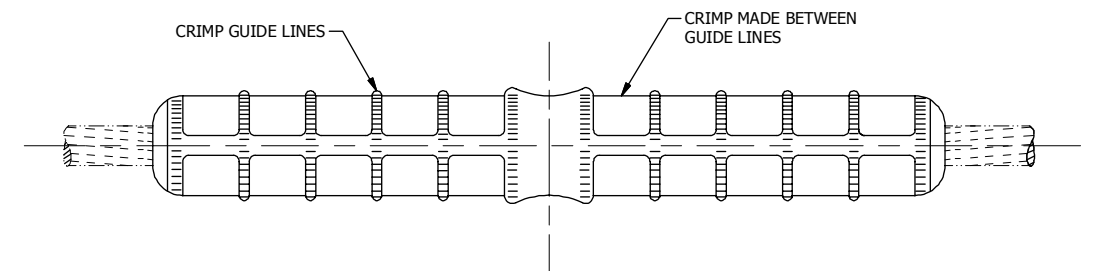
REV	DATE	DESCRIPTION	ECO	BY	CHK.
A	04/02/2012	DRP PROCESS REDRAW	27121	MD	MB

CATALOG NO.	TOOL INDEX NO.	INSTALLATION DATA	
		DIE SET	NO. OF CRIMPS PER END
YDS8WK	162	W - 162	2
YDS6WK			3

BEFORE INSTALLATION



VIEW AFTER INSTALLATION



REFERENCE: SC016887-01

CONDUCTOR		INSTALLATION DATA								
SIZE	STR.	CAT.NO.	O.D.	B APPROX.	L APPROX.	HYPRESS™ WITH NO. OF CRIMPS PER END				
						INDEX NO.	"U" DIES - Y35 / Y750		Y60BH	
1 8 SOL. (.129)	1	YDS8WK	.39 [10]	1.58 [40]	3.48 [88]	162 OR 285	U285	2		
1 6 SOL. (.162)	1	YDS6WK	.48 [12]	1.77 [45]	4.04 [103]	162 OR 276	U276	6		
6 SOL. (.162) 40 # 6 CONDUCTIVITY	1	YDS6WKG1	.41 [10]	1.48 [38]	3.39 [86]	248	U248	4	C248	2
165 SOL. (.165) 40 # 6 CONDUCTIVITY	1	YDS6WKG1	.41 [10]	1.48 [38]	3.39 [86]	248	U248	4	C248	2
4 SOL. (.204)	1	YDS3K10	.53 [13]	20.5 [52]	4.52 [115]	12 k 1/2	UK12T	6		
3#10 (.220)	3#10		.53 [13]	20.5 [52]	4.52 [115]	403	U403	3		
3#8 (.277)	3#8	YDS3K8	.67 [17]	2.46 [62]	5.22 [133]	339	U205	5		5
3#7 (.311)	3#7	YDS3K7	.79 [20]	4.68 [119]	9.80 [249]	167	U167/ U568	10	L167	3
3#6 (.349)	3#6	YDS3K6	.91 [23]	4.26 [108]	8.98 [228]	331	U259/ U331	9	L331	3
3#6 (.349)	3#6	YDS3K6L12	.91 [23]	4.26 [108]	12.00 [305]	331	U259/ U331	9	L331	2
3#5 (.392)	3#5	YDS3K5	.95 [24]	2.30 [58]	6.36 [162]	259		6	L259	2
3#5 (.392)	3#5	YDS3K5G1	.95 [24]	3.95 [100]	8.94 [227]	259	U259/ U331	9	L259	2
3#5 (.392)	3#5	YDS3K5L12	.95 [24]	2.90 [74]	12.00 [305]	259	U259/ U331	6	L259	
5/16 (.306)	7#10	YDS3K7	.79 [20]	4.68 [119]	9.80 [249]	167	U167/ U568	10	L167	5
11/32 (.343)	7#9	YDS3K6	.91 [23]	4.26 [108]	8.93 [227]	331	U259/ U331	9	L331	3
3/8 (.386)	7#8	YDS3K5	.95 [24]	2.90 [74]	6.36 [162]	259	U259/ U331	6	L259	2
7/16 (.433)	7#7	YDS7K7	1.11 [28]	2.79 [71]	6.20 [157]	328			L328	3
1/2 (.486)	7#6	YDS7K6	1.22 [31]	3.62 [92]	8.63 [219]	260			L260	4
9/16 (.546)	7#5	YDS7K5	1.33 [34]	4.06 [103]	10.66 [271]	344			L344	6
3/8 (.386)	7#8	YDS7K5G1	.95 [24]	3.95 [100]	8.94 [227]	259	U259/ U331	9	L259	3
7/16 (.433)	7#7	YDS7K7G1	1.11 [28]	4.13 [105]	9.07 [230]	328		12	L328	4
6M (.237)	7	YDS6KG1	.53 [13]	2.23 [57]	4.53 [115]	403	U403	6		

NOTES:

- MATERIAL: COPPER
- ALL CONDUCTORS ARE EXTRA HIGH STRENGTH, 30% CONDUCTIVITY UNLESS OTHERWISE SPECIFIED. HYSPLICES™ WILL ALSO WORK WITH LOWER STRENGTH CABLES.
- DIMENSIONS IN BRACKETS [] ARE IN MILLIMETERS ROUNDED OFF TO THE NEAREST MILLIMETER, UNLESS OTHERWISE NOTED, AND ARE FOR REFERENCE ONLY.

TO ORDER BURNDY® PRODUCTS CALL
 UNITED STATES
 1-800-346-4175 (LONDONDERRY, NH)
 CANADA:
 1-800-361-6975 (QUEBEC)
 1-800-387-6487 (ALL OTHER PROVINCES)
 FOR PRODUCT INFO: <http://www.burndy.com>

HYSPLICE™ TENSION (COPPERWELD)	
ITEM NO:	N/A
CAT. NO:	YDS-- (TABLE)
DRAWN BY:	JAA 12/16/1952
CHECKER:	CS 12/18/1952
DSN APRVL:	N/A
MFG APRVL:	N/A
QA APRVL:	N/A
MKT APRVL:	N/A
PROD FAM:	N/A
PROJECT #:	N/A
DOCUMENT TYPE:	SALES
REL LEVEL:	Released
DRAWING NO	REV
SC021055-01	A
SHEET 1 OF 1	

