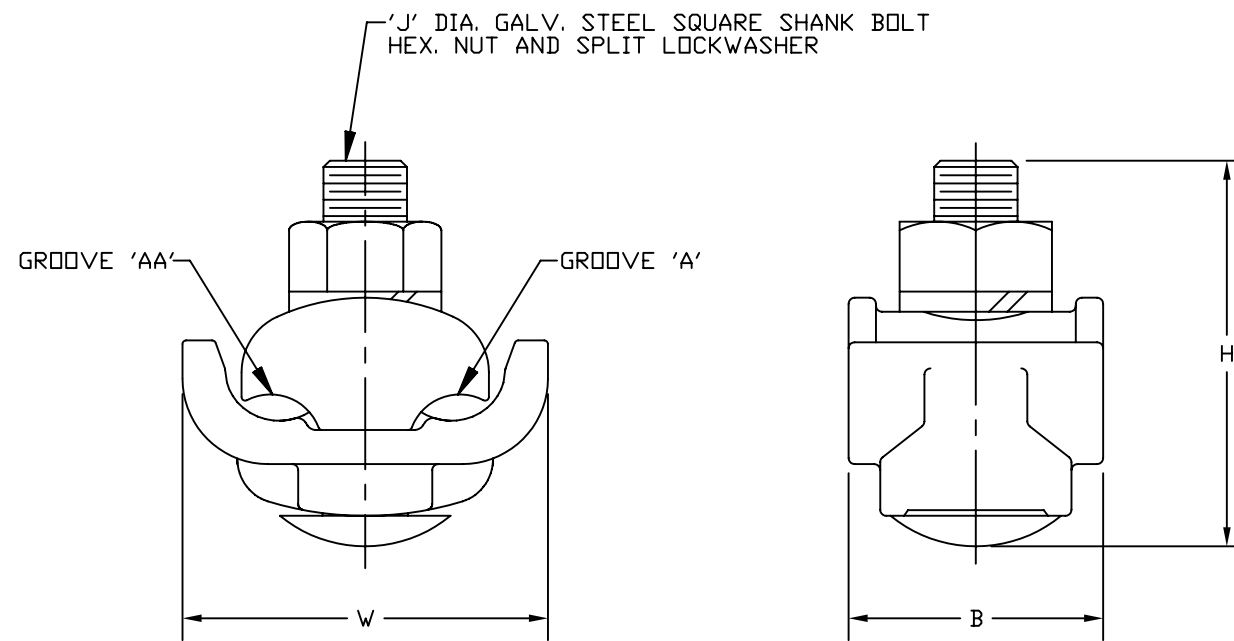


| DRAWING NO. SC037822-01 | RUN GROOVE 'A' | | | | | | | | | | | | TAP GROOVE 'AA' | | | | | | DIMENSIONS | | | | | |
|----------------------------|--------------------|------------------|-------------------|--------------------|---------------------|------------------|-------------------|--------------------|----------------|-----------------------------|----------------|--------------------|-----------------|---------------------|--------------|-----------------------------|--------------|----------------|------------|------------|-----------|-----------|----------|-----------|
| | STRAIGHT ARMOR ROD | | | | PREFORMED ARMOR ROD | | | | COPPER | | ALUM. | | ACSR | | COPPER | | ALUM. | | ACSR | | B | H | J | W |
| | ACSR | | ALUM. | | ACSR | | ALUM. | | | | | | | | | | | | | | | | | |
| | MIN. | MAX. | MIN. | MAX. | MIN. | MAX. | MIN. | MAX. | MIN. | MAX. | MIN. | MAX. | MIN. | MAX. | MIN. | MAX. | MIN. | MAX. | MIN. | MAX. | | | | |
| UC25R2R | | | | | | | | | 8 SOL (.129) | 1/0 STR (.373) | 8 SOL (.128) | 1/0 STR (.373) | #6 (.198) | 1/0 (.398) | 8 SOL (.129) | 2 STR (.292) | 8 SOL (.128) | 1 STR (.328) | #6 (.198) | #2 (.316) | 1.12 [28] | 1.66 [42] | 5/16 [8] | 1.45 [37] |
| UC25R | | | | | | | | | 8 SOL (.129) | 1/0 STR (.419) ² | 8 SOL (.128) | 1/0 STR (.373) | #6 (.198) | 1/0 (.398) | 8 SOL (.129) | 1/0 STR (.419) ² | 8 SOL (.128) | 1/0 STR (.373) | #6 (.198) | 1/0 (.447) | 1.34 [34] | 1.96 [50] | 3/8 [10] | 1.73 [44] |
| UC28R | #6 (6-1) (.434) | #3 (6-1) (.521) | #2 (7 STR) (.521) | #2 (7 STR) (.521) | #6 (6-1) (.440) | #4 (6-1) (.542) | #4 (7 STR) (.474) | #3 (7 STR) (.552) | 1/0 STR (.372) | 4/0 STR (.528) | 1/0 STR (.373) | 4/0 STR (.528) | 1/0 (.398) | 4/0 (.563) | 8 SOL (.129) | 1/0 STR (.372) ³ | 8 SOL (.128) | 1/0 STR (.373) | #6 (.198) | 1/0 (.398) | 1.38 [35] | 2.21 [56] | 3/8 [10] | 1.92 [49] |
| UC32R | #6 (6-1) (.434) | 1/0 (6-1) (.744) | #2 (7 STR) (.521) | 1/0 (7 STR) (.688) | #6 (6-1) (.440) | 1/0 (6-1) (.732) | #4 (7 STR) (.474) | 2/0 (7 STR) (.706) | 1/0 STR (.372) | 350 Kcmil (.681) | 1/0 STR (.373) | 397.5 Kcmil (.724) | 1/0 (.398) | 336.4 (26-7) (.721) | 6 SOL (.162) | 2/0 STR (.419) | 6 SOL (.162) | 2/0 STR (.419) | #6 (.198) | 1/0 (.398) | 1.50 [38] | 2.45 [62] | 3/8 [10] | 2.27 [58] |
| UC33R | #3 (6-1) (.521) | 2/0 (6-1) (.745) | #2 (7 STR) (.521) | 1/0 (7 STR) (.688) | #4 (6-1) (.542) | 1/0 (6-1) (.732) | #3 (7 STR) (.552) | 2/0 (7 STR) (.706) | 4/0 STR (.528) | 400 Kcmil (.728) | 4/0 STR (.528) | 400 Kcmil (.728) | 3/0 (.502) | 336.4 (30-7) (.741) | 6 SOL (.162) | 2/0 STR (.419) | 6 SOL (.162) | 2/0 STR (.419) | #6 (.198) | 2/0 (.447) | 1.75 [44] | 2.77 [70] | 1/2 [13] | 2.21 [56] |



NOTES:

- MATERIAL: CAST ALUMINUM ALLOY.
- ² MAXIMUM RECOMMENDED ALUM. TO COPPER COMBINATION IS 2/0 ALUMINUM OR ACSR #2 STR. COPPER. MAXIMUM COPPER TAP CONDUCTOR IS #2 STR.
- ³ MAXIMUM RECOMMENDED ALUM. TO COPPER COMBINATION IS 4/0 ALUMINUM OR ACSR #2 STR. COPPER. MAXIMUM COPPER TAP CONDUCTOR IS #2 STR.
- PENETROX™ NOTE:
SCRATCH BRUSH ALUMINUM CONDUCTORS: SMEAR PENETROX™ 'A' ON THE CONTACT GROOVES AND ON THE CONDUCTORS BEFORE INSTALLING CONNECTOR.
PENETROX™ 'A' MAY BE PURCHASED FROM BURNDY ELECTRICAL. CONTACT SURFACES PROTECTED BY A FACTORY COATING OF A CORROSION INHIBITING COMPOUND.
- DIMENSIONS IN BRACKETS [] ARE IN MILLIMETERS, ROUNDED OFF TO THE NEAREST MILLIMETER, UNLESS OTHERWISE SPECIFIED. METRIC DIMENSIONS ARE FOR REFERENCE ONLY.

REFERENCE: SD57342
SUPERSEDES: SC37864-9, SC35598-2
SC37864, SC36476-1

| REV. | DATE | DESCRIPTION | ECD | BY | C/K/D |
|------|----------|--------------------------------------|-------|----|-------|
| A | 04/12/07 | CHNG'D 'H' DIM. 2.35" TO 2.45" UC32R | 13971 | RB | PL |

| | | | |
|---|--|----------------------------------|--|
| TO ORDER BURNDY® PRODUCTS CALL | | TAPIT™ | |
| UNITED STATES: 1-800-346-4175 (LONDONDERRY, NH) | | ITEM NO: N/A | |
| CANADA: 1-800-361-6975 (QUEBEC) 1-800-387-6487 (ALL OTHER PROVINCES) | | CAT NO: UC-R (TABLE) | |
| FOR PRODUCT INFO: http://www.burndy.com | | SCALE: N/A | |
| | | DRAWN BY: MTE 06/06/97 | |
| | | CHECKER: ERD 06/07/97 | |
| | | DSN APPVL: C CHADBOURNE 05/22/96 | |
| | | MFG APPVL: -- | |
| | | QC APPVL: D VARIO 06/27/96 | |
| | | MKT APPVL: R PELLETIER 05/04/96 | |
| | | DRAWING NO | |
| | | SC037822-01 | |
| | | REV | |
| | | A | |
| | | PROJECT # | |
| | | SIZE | |
| | | C | |
| | | DOCUMENT TYPE: Sales | |
| | | SHEET 1 OF 1 | |
| | | REL LEVEL: AutoCAD | |